



Express Protect - SV92

EN


Summary

| | |
|--|----|
| 1. Safety instructions..... | 5 |
| 2. USING YOUR APPLIANCE..... | 12 |
| 2.1 Getting started..... | 12 |
| 2.2 Filling the water tank..... | 16 |
| 2.3 Transportation..... | 18 |
| 2.4 Settings..... | 19 |
| 2.5 Vertical steaming | 23 |
| 2.6 Auto-off | 25 |
| 3. MAINTENANCE AND STORAGE | 27 |
| 3.1 Emptying the scale collector | 27 |
| 3.2 Rinsing the boiler..... | 29 |
| 3.3 Cleaning | 32 |
| 3.4 Storage | 33 |
| 4. TROUBLESHOOTING..... | 34 |

Important recommendations

- Please read these instructions carefully before first use. This product has been designed for domestic and indoor use only. Any commercial use, inappropriate use or failure to comply with the instructions, the manufacturer accepts no responsibility and the guarantee will not apply.
- Never unplug the appliance by pulling the power cord. Always unplug your appliance:
 - before filling the water tank or rinsing the boiler,
 - before cleaning the appliance,
 - after each use.
- The appliance will not work without the limescale collector (depending on model).
- The appliance must be used and placed on a flat, stable, heat and water resistant surface. When you place the iron on the iron rest, make sure that the surface on which you place it is stable.
- This appliance is not intended to be used by persons (including children) with reduced or impaired physical, sensory or mental capabilities or persons lacking appropriate knowledge or experience, unless a person responsible for their safety provides either supervision or appropriate instructions concerning use of the appliance prior to its use.
- Children should be supervised to ensure they do not play with the appliance.
- This appliance may be used by children aged 8 or over and persons lacking appropriate knowledge or experience

or persons with reduced or impaired physical, sensory or mental capabilities provided that they have been thoroughly instructed regarding use of the appliance, are supervised, and understand the risks involved. Children shall not play with the appliance. Cleaning and user maintenance shall not be made by children without supervision. Keep the iron and its cord out of reach of children less than 8 years of age when it is energized or cooling down.

-  The surfaces which are marked with this sign, the soleplate and steam cord are very hot during the use of the appliance. Do not touch these surfaces before the appliance has completely cooled down.
- Never leave the appliance unattended when it is connected to the mains. Before storing the appliance, once it is unplugged, please wait until it has cooled down (around 1 hour).
- Do not use any descaling products (vinegar, industrial descaling products, etc.) to rinse the boiler: they may damage the appliance.
- Before rinsing the boiler/rinsing the anti scale collector (depending on model), always make sure that the appliance is completely cooled down and has been unplugged for at least 2 hours before unscrewing the boiler rinse cap/or anti scale collector.
- Warning: if the boiler cap or the boiler rinse cap (depending on the model), is dropped or severely knocked, have it replaced by an Approved Service Centre, as it may be damaged.
- Never fill the appliance directly from the tap.
- The filling, or descaling, or rinsing, or inspection apertures

that are under pressure, must not be opened during use.

- The appliance must not be used if it has been dropped, if it has any visible damage, if it leaks, or if it functions abnormally in any way. Do not attempt to dismantle your appliance: have it examined at an Approved Service Centre to avoid any danger.
- Check the electrical power cord and steam cords for signs of wear or damage prior to use. If the electrical power cord or the steam cord is damaged, it must be replaced by an Approved Service Center to avoid any danger.
- Accessories, consumables and end user replaceable parts must be only purchased from an Approved Service Centre.
- For your safety, this appliance conforms to all applicable regulations (Low Voltage Directive, Electromagnetic Compatibility, Environment, etc).
- Your steam generator iron is an electrical appliance: it must be used under normal conditions of use. It is designed for domestic use only.
- It is equipped with 2 safety systems:
 - a pressure release valve designed to avoid excessive pressure. In the event of malfunction, the valve releases excess steam.
 - a thermal fuse to avoid overheating.
- Always plug your steam generator iron:
 - into a mains circuit with voltage between 220 V and 240 V (Alternating current only),
 - a socket outlet with an earth connection.Connecting to the wrong voltage may cause irreparable damage to the appliance and will invalidate your guarantee.
- Do not use an extension lead. If you accept liability for doing so, only use an extension lead which is in good condition, has a plug with an earth connection and is suited to the power rating of the appliance.
- Completely unwind the power cord before plugging into an earthed socket outlet.

- The soleplate of your iron, the steam cord, and the iron rest on the base unit can reach extremely high temperatures, and can cause burns: do not touch them. Never touch the electrical power cords with the sole plate of the iron.
- Always use a vented/mesh ironing board to prevent water spots on clothes and to avoid hot steam venting sideways.
- Your appliance emits steam, which can cause burns. Always handle the iron with care, especially when ironing vertically.
Never direct the steam towards people or animals. Never iron clothing on a person, always use a hanger. Never iron in a seated position with your legs under the iron board.
- Never immerse your steam generator iron in water or any other liquid. Never place it under a running tap.

Important note for ≥2600 W models only:

In adverse conditions, phenomena such as transient voltage dips or fluctuations in brightness may occur. As such, we recommend plugging the iron into a power outlet with a maximum impedance of 0.30 Ω. If necessary, users can contact their electricity supplier to find out the grid impedance at the relevant connection point.

What water to use?

Your appliance has been designed to function using untreated tap water. If your water is very hard, we recommend you use a mix of 50% untreated tap water and 50% distilled water available in hardware stores.

- Types of water not to use:
Heat concentrates the elements contained in water during evaporation. The types of water listed below may contain organic waste, mineral or chemical elements that can cause spitting, brown staining or premature wear of the appliance: water from clothes dryers, scented or softened water, water from refrigerators, batteries, air conditioners, rain water,

boiled, filtered or bottled water. These types of water should not be used in your TEFAL iron. Also only use distilled water as advised above.

Always remember:

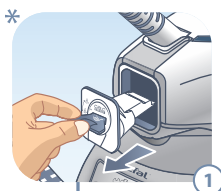
Never use rainwater or water containing additives (like starch, fragrance or water from domestic appliances). Such additives can affect the steam properties and at high temperature, form deposits in the steam generator chamber which are likely to stain your washing and lead to premature aging of the appliance.

PLEASE RETAIN THIS INSTRUCTION BOOKLET FOR FUTURE REFERENCE



Environment protection first !

- ① Your appliance contains valuable materials which can be recovered or recycled.
- ➔ Leave it at a local civic waste collection point.



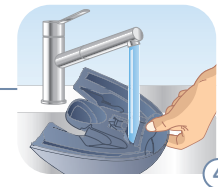
1



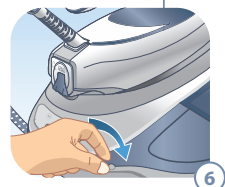
2



3



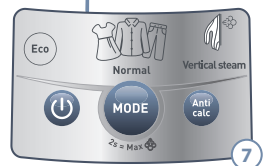
4



6



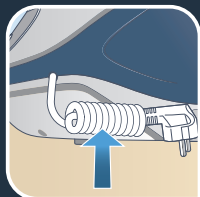
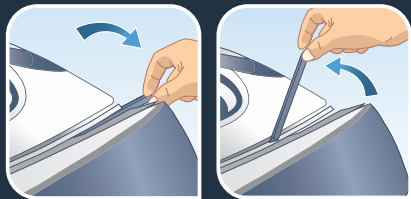
7



7

- 1 Scale collector
- 2 Steam trigger
- 3 Lock system
- 4 Water tank
- 5 Flush accessory
- 6 Steam cord
- 7 Control panel

USING YOUR APPLIANCE

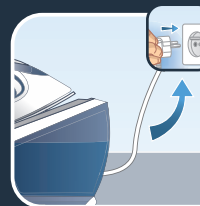


2.1 Getting started

Express Protect is equipped with a lock system to hold the iron onto the base for easy transport and storage.

- Unlock your steam generator.
- Completely unwind the power cord and take the steam cord out of its storage space.

USING YOUR APPLIANCE



- Fill the water tank with tap water up to the max indication. Put the tank back into the appliance by pushing in until it locks into place.
- Always ensure that the base unit is positioned close enough to the ironing surface to avoid straining and wear of the steam cord.
- Plug in your steam generator.

USING YOUR APPLIANCE



- Press the «ON-OFF» button on the control panel.
- The «ON-OFF» and the «Normal» button light remain flashing while the appliance is warming up.



- The steam generator is ready for use. The mode can still be switched even when the light flashes. After around 2 minutes, the light of the selected setting ECO / NORMAL / VERTICAL STEAM remains lit.

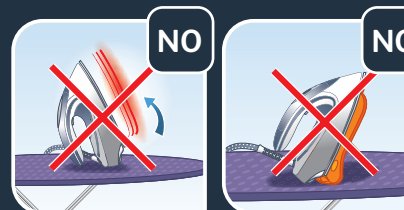


- To obtain steam, press the steam trigger under the iron handle. The steam will stop a few seconds after you release the button.

USING YOUR APPLIANCE



- To release even more steam, press the steam trigger under the handle three times in quick succession for automatic sequential steam.



During ironing do not leave the iron faced down on the soleplate or resting on the flush accessory. For your safety, place the iron on the steam generator base or on its heel.

WARNING: Remember that the soleplate remains very hot and can burn.

USING YOUR APPLIANCE



2.2 Filling the water tank

- Switch off and unplug the appliance.

- Remove the removable water tank using the handle located at the front of the steam generator

- Fill it with tap water without exceeding the MAX indicator.

- Push it back into its housing until you hear a «click».



USING YOUR APPLIANCE



- Plug in the appliance.
- Press the «ON-OFF» button to restart the appliance.

USING YOUR APPLIANCE



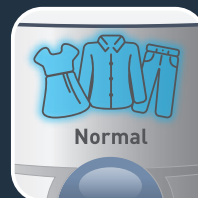
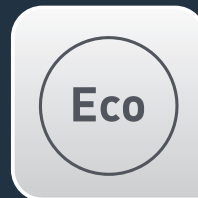
2.3 Transportation

Your steam generator is equipped with a lock system to hold the iron onto the base for easy transport and storage

To transport your steam generator using the handle of the iron:

- Put the iron on the steam generator base and lift the lock system over the iron until it locks into place and you hear an audible click.
- Hold the iron by the handle to transport your steam generator.

USING YOUR APPLIANCE



2.4 Settings

Changing modes

- Press the « MODE » button located on the control panel to go from one setting to another.

USING YOUR APPLIANCE



- When you press the MODE button to change mode, the light of the new mode flashes while the steam generator is adapting temperature and steam to the new setting. The steam generator is ready when the light stops flashing.

USING YOUR APPLIANCE

| | |
|-----------|--|
| DELICATE | |
| NORMAL | |
| MAX BOOST | |

Choosing the adapted mode

- Check garment label. According to the type of fabric to be ironed, select the right setting on the appliance.
- The product will automatically adjust the steam output.

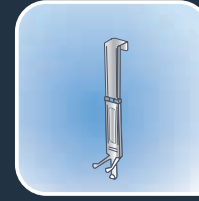
USING YOUR APPLIANCE



Boost mode

- To switch to the "Max" mode, just press the mode button for 2 seconds

USING YOUR APPLIANCE



2.5 Vertical steaming

As steam is very hot: never attempt to remove creases from a garment while it is being worn, always hang garments on a coat hanger.

- Hang the garment on a coat hanger and hold the fabric slightly taut with one hand.

USING YOUR APPLIANCE



- Holding the iron in a vertical position tilted slightly forwards, press repeatedly on the steam trigger (underneath the iron handle) moving the iron from top to bottom.



- Always use the 'max' setting on the thermostat for vertical steaming.

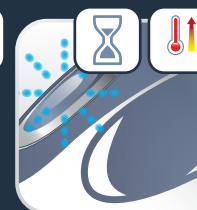


USING YOUR APPLIANCE

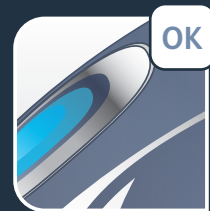


2.6 Auto-off

- The steam generator is fitted with an «AUTO-OFF» monitoring system, which is activated automatically after approximately 8 minutes without use. The «ON-OFF» button flashes to indicate that the appliance is on standby.
- To reactivate the steam generator, press the «ON-OFF» button.



USING YOUR APPLIANCE



• After approximately 30 minutes of non-use, the «AUTO-OFF» system switches off your steam generator.

• To start your ironing again, press the «ON-OFF» button.

MAINTENANCE AND STORAGE



3.1 Emptying the scale collector*

- For long lasting steam performance, empty the scale collector every now and then.
- Switch off and unplug the appliance.

MAINTENANCE AND STORAGE



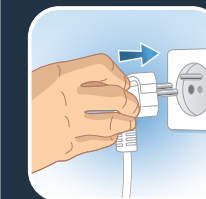
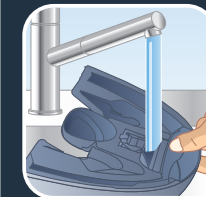
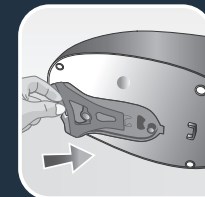
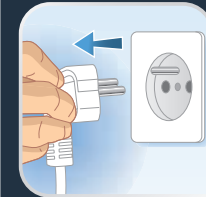
Appliance must be completely cooled down and unplugged for at least an hour before emptying the scale collector.

- Fully unscrew the collector and pull it out of the base unit.

Do not use your steam generator without reinserting the scale collector.

* Depending on model

MAINTENANCE AND STORAGE



3.2 Descaling your generator

- The flashing 'anti calc' indicator alerts you when descaling is required.
- Switch off the unit by pressing the «Off» button, then unplug the appliance and allow it to cool completely.
- Detach the Flush accessory from the base of the appliance.*
- Move the unit over a sink and fill the water tank.
- Place the flush accessory near the sink and place the iron on top.*
- Put the water tank back in the base.
- Plug in the appliance and switch it on by pressing the «On» button.

* Depending on model

MAINTENANCE AND STORAGE



- If you do not have the model with the flush accessory, then hold your iron above the sink.

- Press the blinking «Anti calc» button for 3 seconds.

- The descaling process is performed, during which the iron will emit water and steam for 2 minutes. Beware of the irons heat during the descaling cycle.

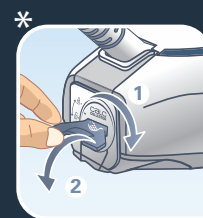
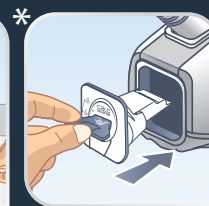
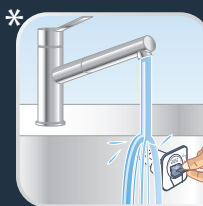
- An audio signal (long beep) sounds at the end of the cycle.

- Your steam generator will shut down automatically. You must then unplug the steam generator and allow it to cool.

- Unlock and remove the anti-scale collector in the back of the iron to rinse it.*

* Depending on model

MAINTENANCE AND STORAGE

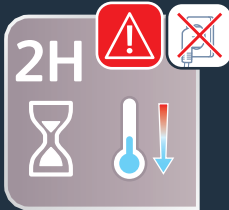


- Next, put back the collector, as well as the flush accessory.

- Please make sure to empty the water tank before replacing the removable stand underneath the appliance.

* Depending on model

MAINTENANCE AND STORAGE



3.3 Cleaning

Appliance must be completely cooled down and unplugged for at least 2 hours before emptying the scale collector.

- Clean soleplate with a soft damp cloth.

Do not use detergent or descaling products for cleaning the soleplate.

- Clean the plastic parts of the appliance occasionally with a soft cloth.

Never hold the iron or the base unit under the tap.



MAINTENANCE AND STORAGE



3.4 Storage

- Switch off and unplug the appliance.
- Store the power cord in its side storage place.
- Store the steam cord in its side storage place without stretching it too much.
- Store the flush accessory in its holder placed underneath the appliance.*
- Leave the steam generator to cool (around 1hour) then empty the water tank before putting it away if you are storing it in a cupboard or a confined space.

If you store your steam generator in a relatively cold place (approximately <math><10^{\circ}\text{C}</math>), put it in a warm place before starting your ironing.

TROUBLESHOOTING

| Problem | Possible Causes | Solutions |
|---|--|--|
| Your iron is producing little or no steam. | You have just filled the tank or changed the anti-calc cartridge, or you have just started using it. | Press the steam control button continuously for few minutes pointing it away from your linen, in order to prime the pump. |
| | There is no anti calc cartridge in the appliance or it is not properly installed. | Make sure the anticalc cartridge is installed and locked in its compartment. |
| | Steam cannot be produced at the temperature you have selected. | Set the thermostat control in the coloured zone (••• or MAX). |
| | The water tank is empty. | Fill the tank. |
| Water runs out of the holes of the soleplate. | You are using steam for the first time or you have not used it for some time. | Press on the steam control button away from your ironing board until the iron produces steam. |
| | The setting is not correct (1 dot / 2 dots) and the soleplate is not hot enough to produce steam. | Set the iron at 3 dots (••• or MAX) and wait for the iron thermostat light to go out before activating the steam button again. |
| | You are performing the Anti calc procedure. | It is normal that water runs out of the holes of the soleplate during Anti calc procedure. |

| Problem | Possible Causes | Solutions |
|--|--|--|
| Water streaks appear on the linen. | Your ironing board is saturated with water because it is not suitable for use with an appliance. | Check that your ironing board is suitable. We recommend that you use a vented/mesh type ironing board. |
| Brown streaks come through the holes in the soleplate and stain the linen. | You are using chemical descaling agents or additives in the water ironing. | Never add this type of product in the water tank (see "for what water may be used"). Contact an Approved Service Centre. |
| The soleplate is dirty or brown and may stain the linen. | You are ironing at too high a temperature. | See our recommendations regarding temperature control setting. |
| The "anti calc" indicator is flashing*. | The anti calc cartridge is no longer efficient. | Replace the anti scale cartridge with a new one then press the reset button for a minimum of 3 seconds. |
| | The descaling procedure must be performed. | See section "Descaling your generator." In this manual to perform the descaling procedure. |

| Problem | Possible Causes | Solutions |
|---|--|--|
| The anti calc indicator is still flashing after replacing the cartridge. | You have not pressed the reset button. | Press the reset button until the light stops flashing. |
| The anti calc indicator is still flashing after performing the descaling procedure. | The descaling procedure has not been correctly done. | See section "descaling your generator". |

* Depending on the model

If you have any problems or queries please call our Customer Relations team first for expert help and advice