



KRUPS

MELODY 3
USER MANUAL



TABLE OF CONTENTS

SAFETY PRECAUTIONS.	3-4
OVERVIEW	5
PRODUCT RANGE	6-7
FIRST USE.	8
PREPARING A BEVERAGE.	9
RECOMMENDATIONS FOR A SAFE USE / ECONOMY MODE . .	10
CLEANING	11
IF NO LIQUID COMES OUT...	12-13
DESCALING AT LEAST EVERY 3-4 MONTHS.	14-15
TROUBLESHOOTING	16-17

SAFETY PRECAUTIONS



When using electrical appliances, basic safety precautions shall always be followed, including the following:

1. Read these instructions for use carefully before using your appliance for the first time and keep them to hand for future reference.
2. Connect the appliance to a mains socket with an earth connection only. Mains voltage must be the same as the details on the rating plate. The use of incorrect connection will negate the guarantee and may be hazardous.
3. This appliance is designed for indoor domestic household use only. It is not intended to be used in following applications, and the guarantee will not apply for:
 - staff kitchen areas in shops, offices and other working environments;
 - farm houses;
 - by clients in hotels, motels and other residential type environments;
 - bed and breakfast type environments.
4. Your appliance is intended for domestic use inside the home only at an altitude below 3400 m.
5. In case of any inappropriate use or failure to comply with the instructions, the manufacturer accepts no responsibility and the guarantee may not apply.
6. We recommend using the NESCAFÉ® Dolce Gusto® capsules designed and tested for the NESCAFÉ® Dolce Gusto® machine. They were designed to interact together - the interaction provides the in-cup quality that NESCAFÉ® Dolce Gusto® is known for. Each capsule is designed to prepare a perfect cup, and cannot be reused.
7. Do not remove hot capsules by hand. Use handles or knobs.
8. Always use the appliance on a flat, stable, heat resistant surface away from sources of heat or water splashes.
9. To protect against fire, electric shock and injury to persons do not immerse the power cord, plugs or the appliance in water or other liquid. Never touch the power cord with wet hands. Do not overfill the water tank.
10. In case of an emergency remove the plug from the power socket immediately.
11. Close supervision is necessary when the appliance is used near children. Keep the appliance / power cord / capsule holder out of reach of children. Children should be supervised to ensure that they do not play with the appliance. Never leave the appliance without surveillance while making a beverage.
12. This appliance is not intended for use by children or persons with reduced physical, sensory or mental capabilities, or lack of experience and knowledge, unless they have been given supervision or instruction concerning use of the appliance by a person responsible for their safety. Persons who have a limited or no understanding of the operation and use of this appliance must first read and fully understand the contents of the user manual, and where appropriate seek additional guidance on its operation and use from the person responsible for their safety.
13. Do not use the appliance without the drip tray and drip grid, except when a very tall mug is used. Do not use the appliance for hot water preparation.
14. For health reasons, always fill the water tank with fresh drinking water.
15. After use of the appliance always remove the capsule and clean the capsule holder. Empty and clean the drip tray and capsule bin daily. Users allergic to dairy products: Rinse the appliance according to the cleaning procedure.
16. Unplug from the mains socket when not in use.
17. Unplug from the mains socket before cleaning. Allow to cool before putting on or taking off parts, before cleaning the appliance. Never clean wet or immerse appliance in any fluid. Never clean the appliance with running water. Never use detergents to clean the appliance. Clean the appliance only using soft sponges/brushes. The water tank should be cleaned with a baby bottle brush.
18. Never turn the machine upside down.
19. If away for prolonged periods, on holiday, etc. the appliance must be emptied, cleaned and unplugged. Rinse before reuse. Operate the rinse cycle before re-using your appliance.
20. Do not turn off the appliance during the descaling process. Rinse the water tank and clean the appliance to avoid any residual descaling agent.



SAFETY PRECAUTIONS

21. Any operation, cleaning and care other than normal use must be undertaken by after-sales service centres designated by NESCAFÉ® Dolce Gusto® Hotline. Do not dismantle the appliance and do not put anything into the openings.
 22. In case of intensive use without allowing sufficient cooling time, the appliance will stop functioning temporarily with the red indicator light blinking. This is to protect your appliance from overheating. Switch the appliance off for 20 minutes to let it cool down.
 23. Do not operate any appliance with a damaged cord or plug. If the power cord is damaged, it must be replaced by the manufacturer, its service agent or similarly qualified persons in order to avoid a hazard. Do not operate any appliance that malfunctions or has been damaged in any manner. Unplug cord immediately. Return the damaged appliance to the nearest authorised service facility designated by NESCAFÉ® Dolce Gusto® Hotline.
 24. The use of accessory attachments not recommended by the appliance manufacturer may result in fire, electric shock or injury to persons.
 25. Do not let the cord hang over the edge of a table or counter, or touch hot surfaces or sharp edges. Do not allow the cord to dangle (risk of tripping up). Never touch the cord with wet hands.
 26. Do not place on or near a hot gas or electric burner, or in a heated oven.
 27. To disconnect, turn the power button OFF, then remove the plug from the wall socket. Do not unplug by pulling the cord.
 28. Always close the extraction head with the capsule holder. Do not pull out the capsule holder before the indicator stops blinking. The appliance will not work if the capsule holder is not inserted.
 29. Scalding may occur if the lever is opened during the brewing cycles. Do not pull up the lever before the lights on the machine stop flashing.
 30. Do not put fingers under the outlet during beverage preparation.
 31. Do not touch the needle of the extraction head.
 32. Never carry the appliance by the extraction head.
 33. The capsule holder is equipped with permanent magnets. Avoid placing the capsule holder near appliances and objects that can be damaged by magnetism, e.g. credit cards, usb drives and other data devices, video tapes, television and computer monitors with picture tubes, mechanical clocks, hearing aids and loud speakers.
 34. Patients with pacemakers or defibrillators: Do not hold the capsule holder directly over the pacemaker or defibrillator.
 35. If the power socket does not match the plug on the appliance, have the plug replaced with a suitable type by after-sales service centres designated by NESCAFÉ® Dolce Gusto® Hotline.
 36. Packaging is made of recyclable materials. Contact your local council / authority for further information on recycling programs. Your appliance contains valuable materials which can be recovered or recycled.
 37. For additional guidance on how to use the appliance, refer to the user manual on www.dolce-gusto.com or call NESCAFÉ® Dolce Gusto® hotline number.
 38. Please be aware that the appliance is still using electricity whilst in eco-mode (0.4 W/hour).
- WARNING: To reduce the risk of fire or electric shock, do not remove the cover. No user serviceable parts inside. Repair should be done by authorised service personnel only!**
- EUROPEAN MARKETS ONLY:**
39. Keep the appliance and its cord out of reach of children aged less than 8 years. Children shall not play with the appliance.
 40. This appliance can be used by children aged from 8 years and above and persons with reduced physical, sensory or mental capabilities or lack of experience and knowledge if they have been given supervision or instruction concerning use of the appliance in a safe way and if they understand the hazards involved. Cleaning and user maintenance shall not be made by children unless they are older than 8 and supervised by an adult. This appliance is labeled in accordance with European Directive 2002/96/EC concerning used electrical and electronic appliances equipment – WEEE). The directive determines the framework for the return and recycling of used appliances as applicable throughout the EU.

OVERVIEW



- ① Water tank
- ② Selection lever
- ③ Cold
- ④ Stop
- ⑤ Hot
- ⑥ Locking handle
- ⑦ Capsule holder
- ⑧ Power button
- ⑨ Drip grid
- ⑩ Drip tray
- ⑪ Capsule bin

US
Mexico
Chile, Perú
Costa Rica,
HK, AE, PH
TW

12 V, 60 Hz, max. 1500 W
127 V, 50-60 Hz max. 11.5 A
220 V, 50-60 Hz max. 1340 W
120 V, 60 Hz, max. 1460 W
220-240 V, 50 Hz, max. 1500 W
110 V, 60 Hz, 1460 W

P

max. 15 bar

1.3 l

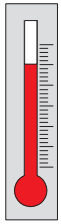
~3 kg

5-45 °C
41-113 °F

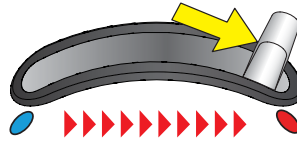
A = 20.0 cm
B = 30.5 cm
C = 31.5 cm



PRODUCT RANGE



Hot Beverage



ESPRESSO



35 ml Ristretto

50 ml Espresso Espresso Intenso

LUNGO



120 ml

CAPPUCCINO



200 ml + 40 ml = 240 ml

CHOCOCINO



100 ml + 110 ml = 210 ml

PRODUCT RANGE



LATTE MACCHIATO

Diagram illustrating the preparation of Latte Macchiato. It shows a box of Nescafé Dolce Gusto Latte Macchiato, two coffee capsules (labeled 1 and 2), and a coffee machine. The machine is shown with a glass filled with milk and coffee. The resulting drink is 220 ml, composed of 170 ml of milk and 50 ml of coffee.

AROMA / GRANDE CAFFÈ CREMA

Diagram illustrating the preparation of Aroma / Grande Caffè Crema. It shows two boxes of Nescafé Dolce Gusto coffee capsules, two capsules, and a coffee machine. The machine is shown with a glass filled with coffee. The resulting drink is 200 ml, labeled "Aroma Caffè Crema Grande".

Cold Beverage

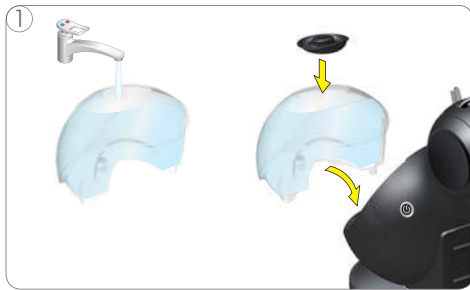
Diagram illustrating the preparation of a Cold Beverage. It shows a thermometer indicating a cold temperature, a glass filled with ice and coffee, and a coffee machine. The machine is shown with a glass filled with coffee and ice.

CAPPUCCINO ICE

Diagram illustrating the preparation of Cappuccino Ice. It shows a box of Nescafé Dolce Gusto Cappuccino Ice, two coffee capsules (labeled 1 and 2), and a coffee machine. The machine is shown with a glass filled with milk, coffee, and ice. The resulting drink is 240 ml, composed of 135 ml of milk and 105 ml of coffee.



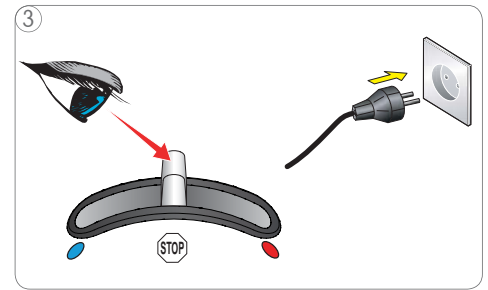
FIRST USE



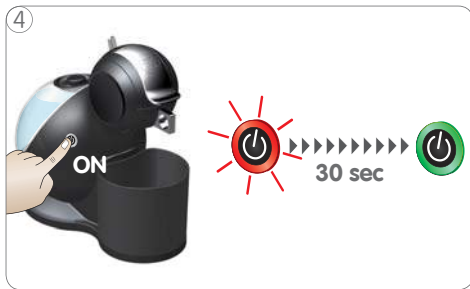
1 Rinse water tank at first. Fill water tank with fresh, drinking water. Place cap and insert water tank to machine.



2 Open locking handle and insert empty capsule holder. Close locking handle. Place capsule bin under outlet.



3 Make sure that the selection lever is in "STOP" position. Then plug the power plug into a mains power socket.



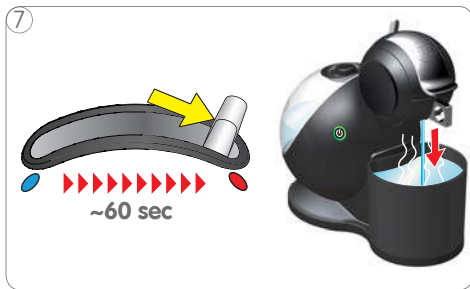
4 Switch machine on. Power button starts blinking red while machine is heating up for approx. 30 seconds. Afterwards power button lights steady green and machine is ready.



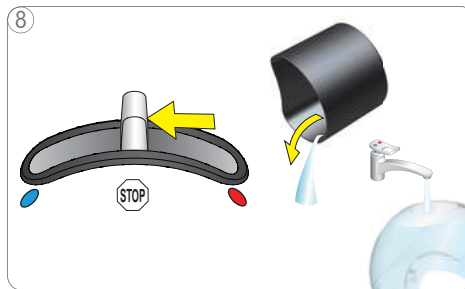
5 Push selection lever to the "COLD" position. Machine starts rinsing.



6 After approx. 60 seconds push selection lever to the "STOP" position. Machine stops rinsing and power button blinks red for about 5 seconds.



7 Push selection lever to the "HOT" position. Machine starts rinsing.



8 After approx. 60 seconds push selection lever to the "STOP" position. Empty capsule bin and refill water tank with fresh, drinking water.



9 Remove protection foil from drip grid. Place drip grid on drip tray. Then insert drip tray at desired position of machine.

PREPARING A BEVERAGE



Switch machine on. Power button starts blinking red while machine is heating up for approx. 30 seconds. Afterwards power button lights steady green and machine is ready.



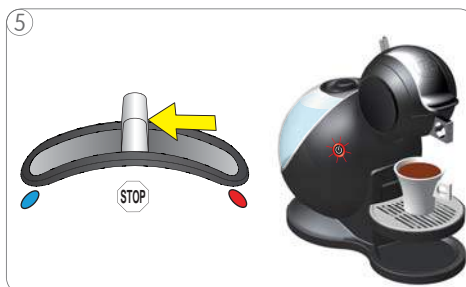
Adjust drip tray position according to the chosen beverage (see page 4-5). Place cup on drip tray.



Open locking handle and pull out capsule holder. Insert capsule in capsule holder and insert it back in machine. Close locking handle.



Push selection lever to the "HOT" position. Beverage preparation starts.



After reaching the desired level push selection lever to the "STOP" position. Machine stops preparation.



After finishing preparation the power button blinks red for about 5 seconds. **During that time do not open locking handle!**



Take cup from drip tray. Open locking handle.



Pull out capsule holder and remove used capsule. Put used capsule in capsule bin.



Rinse and dry capsule holder with water from both sides. Insert capsule holder to machine. Enjoy your beverage!



RECOMMENDATIONS FOR A SAFE USE



⚠ Never fill hot water into the water tank!



⚠ Never open the locking handle during beverage preparation!



⚠ After finishing preparation the power button blinks red for about 5 seconds. **During that time do not open locking handle!**

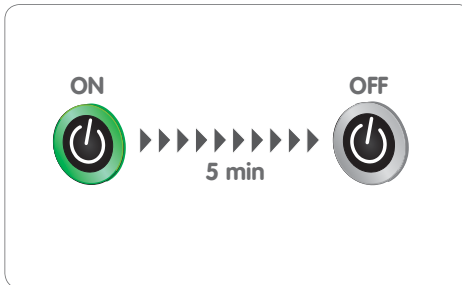


⚠ Never push selection lever while locking handle is opened!



⚠ Do not touch used capsule after beverage preparation! Hot surface, risk of burns!

ECONOMY MODE

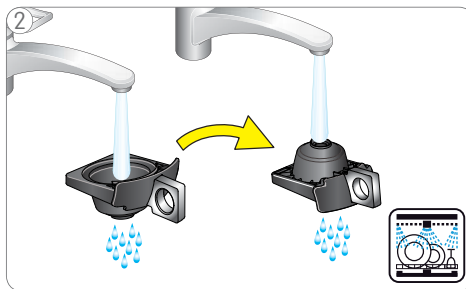


After 5 minutes of non-usage the machine automatically shuts down (Economy Mode).

CLEANING



1 Rinse drip tray with water and clean it with a brush.



2 Rinse and dry capsule holder with water from both sides. You can also put it in a dishwasher.



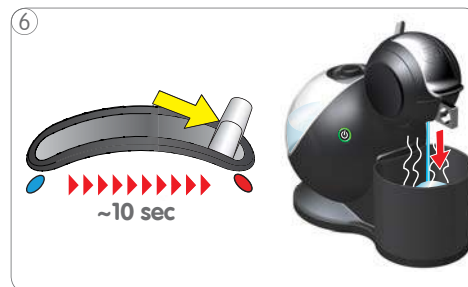
3 Rinse and clean water tank. Afterwards refill with fresh, drinking water and insert it to machine. The water tank is not dishwasher proof!



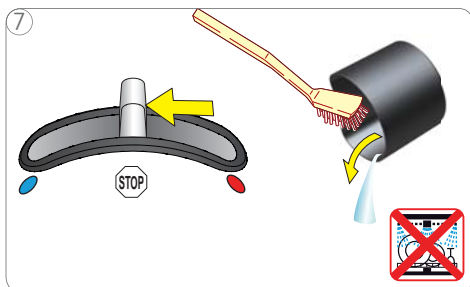
4 Open locking handle and insert empty capsule holder. Close locking handle and place capsule bin.



5 Switch machine on. Power button starts blinking red while machine is heating up for approx. 30 seconds. Afterwards power button lights steady green and machine is ready.



6 Push selection lever to the "HOT" position. Machine starts rinsing.



7 After approx. 10 seconds push selection lever to the "STOP" position. Empty and clean capsule bin.



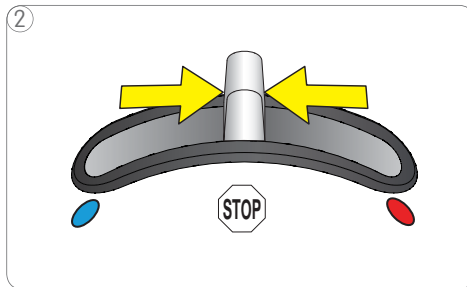
8 Place drip grid on drip tray. Then insert drip tray at desired position of machine. Clean machine with a soft damp cloth. Dry it afterwards with a soft dry cloth.



IF NO LIQUID COMES OUT...



No liquid comes out and the machine makes a loud noise.



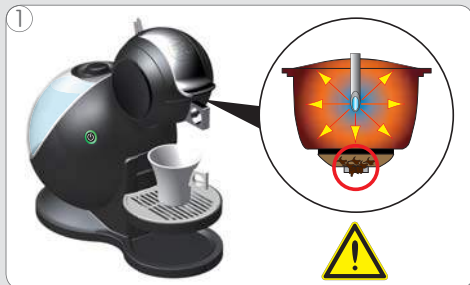
Turn selection lever to neutral position.



Check if there is water in the water tank: if not, refill and move lever again to hot/cold position to continue preparation; if yes proceed as follows:

Check if locking handle can be lifted easily: NO - see section **A** (below) / YES – see section **B** (next page)

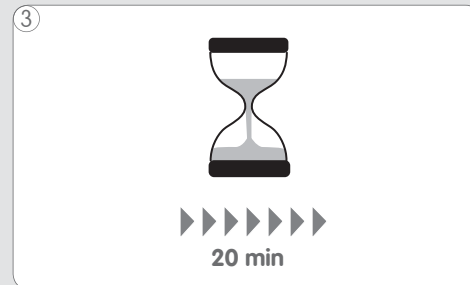
A



The capsule may be blocked and under pressure.



Do not use force to lift the locking handle.



Wait for 20 minutes to reduce the pressure.



Then lift the locking handle and remove the capsule holder.



Throw away the capsule.

IF NO LIQUID COMES OUT...

B



1 The injector may be blocked.



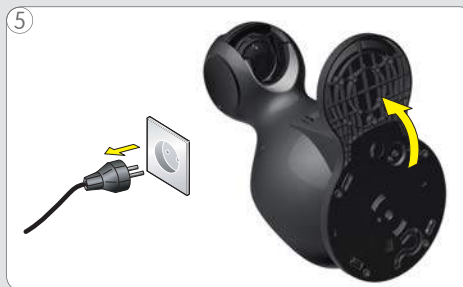
2 Lift the locking handle and remove the capsule holder.



3 Throw away the capsule.



4 Remove the water tank and take out the cleaning needle. Close the locking handle.



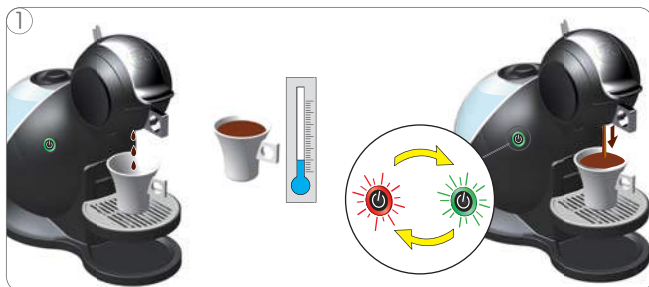
5 Unplug machine. For better access to injector tilt machine.



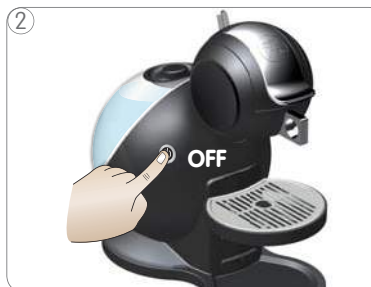
6 Unblock the injector with the cleaning needle.



DESCALING AT LEAST EVERY 3-4 MONTHS



If dispensing is slower than usual, if beverage is cooler than usual or if the Power Button flashes red and green, descale.



Call NESCAFÉ® Dolce Gusto® Hotline or go on the NESCAFÉ® Dolce Gusto® website. For Hotline numbers see Safety Precaution booklet.



Switch machine OFF.



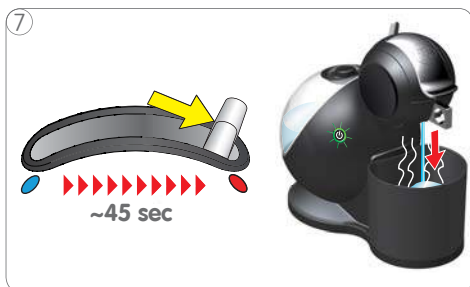
Mix 1 litre fresh, drinking water with descaler sachet in a measuring cup. Pour descaling solution into water tank and insert water tank to machine.



Open locking handle and insert empty capsule holder. Close locking handle and place capsule bin.



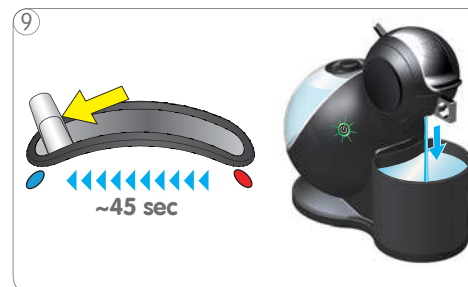
Press and hold power button for at least 5 seconds. Power button starts blinking green and machine enters the descaling mode.



Push selection lever to the "HOT" position. Machine starts rinsing, power button blinks green.

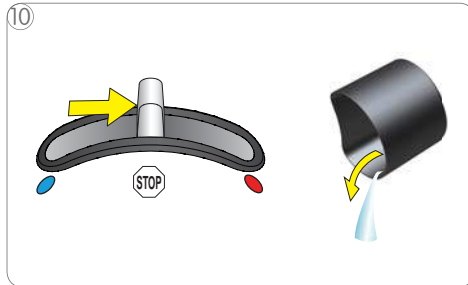


After approx. 45 seconds push selection lever to the "STOP" position.



Push selection lever to the "COLD" position. Machine starts rinsing, power button blinks green.

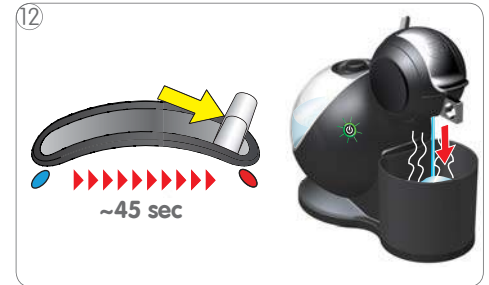
DESCALING AT LEAST EVERY 3-4 MONTHS



10 After approx. 45 seconds push selection lever to the "STOP" position. Empty capsule bin.



11 Rinse and clean water tank. Afterwards refill with fresh, drinking water and insert it to machine.



12 Push selection lever to the "HOT" position. Machine starts rinsing, power button blinks green.



13 After approx. 45 seconds push selection lever to the "STOP" position.



14 Push selection lever to the "COLD" position. Machine starts rinsing, power button blinks green.



15 After approx. 45 seconds push selection lever to the "STOP" position. Refill water tank with fresh drinking water and insert it to machine. Clean machine with a soft damp cloth. Dry it afterwards with a soft dry cloth. Switch machine OFF.



IMPORTANT HINTS



Follow instructions on descaling kit user manual.



Avoid contact of descaling liquid with any part of the machine.



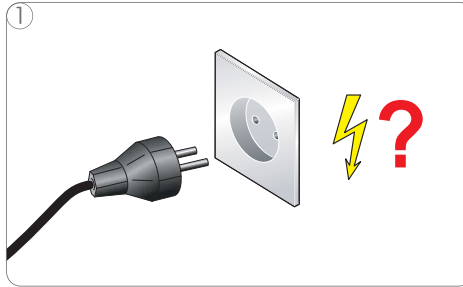
Do not use vinegar for descaling.



Do not push power button during descaling cycle.



Machine cannot be switched on.



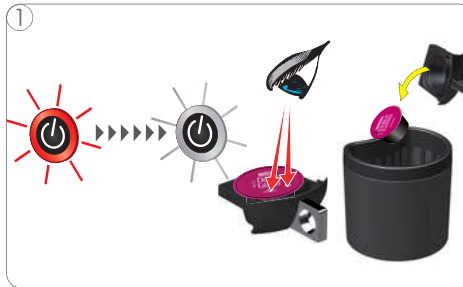
1 Check if the power plug is plugged correctly into a mains power socket. If yes check your electricity supply.



2 If machine still cannot be switched on call NESCAFÉ® Dolce Gusto® Hotline. For hotline numbers see Safety Precaution booklet.



Beverage is splashing out of coffee outlet.



1 Stop preparation, pull out capsule holder and check capsule. There should be only one hole in the capsule. Throw away capsule with more than one puncture.



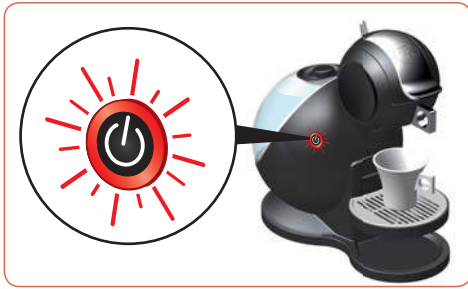
2 Insert a new capsule in the capsule holder and insert it back in the machine.



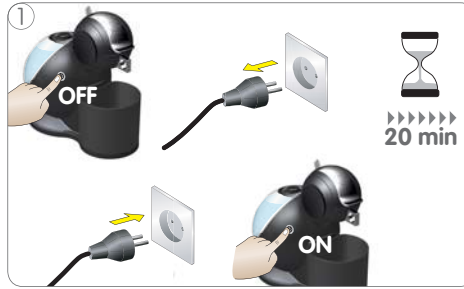
If the beverage only comes out in droplets or if the beverage is cooler than usual, the machine has to be descaled.



1 Call NESCAFÉ® Dolce Gusto® Hotline or go on the NESCAFÉ® Dolce Gusto® website. For hotline numbers see Safety Precaution booklet.



Power button stays red.



Switch machine off. Check if capsule is blocked (see page 10). Unplug power plug and wait 20 minutes. Afterwards plug power plug into mains power socket and switch machine on.



If power button still flashes red call NESCAFÉ® Dolce Gusto® Hotline. Hotline numbers see safety precautions booklet.



KRUPS



HOTLINES

AL	0842 640 10	HK	2179 8888	MK	0800 00 200
AR	0800-999-8100	HR	0800 600 604	MT	80074114
AT	0800 365 23 48	HU	06 40 214 200	MY	1800 88 3633
BE	0800 93217	IE	00800 6378 5385	NL	0800-3652348
BG	0 800 1 6666	IT	800365234	NO	800 80 730
BR	0800 7762233	JP	81-35651-6848	PE	80010210
BS	0800 202 42		(machines)	PL	0800 174 902
CA	1 888 809 9267		81-35651-6847	PT	800 200 153
CH	0800 86 00 85		(capsules)	RO	0 800 8 637 853
CL	800 4000 22	KO	080-234-0070	RU	8-800-700-79-79
CZ	800 135 135	KS	0842 640 10	SE	020-29 93 00
DE	0800 365 23 48	KZ	8-800-080-2880	SG	1 800 836 7009
DK	35460100	LU	8002 3183	SK	0800 135 135
EE	6 177 441	LT	8 700 55 200	SL	080 45 05
ES	900 10 21 21	LV	67508056	SR	0800 000 100
FI	0800 0 6161	ME	020 269 902	UK	0800 707 6066
FIL	898-0061	MEX	5267 3304	UKR	0 800 50 30 10
FR	0 800 97 07 80		01800 365 2348	US	1-800-745-3391
GR	800 11 68068		(Lada sin costo)		