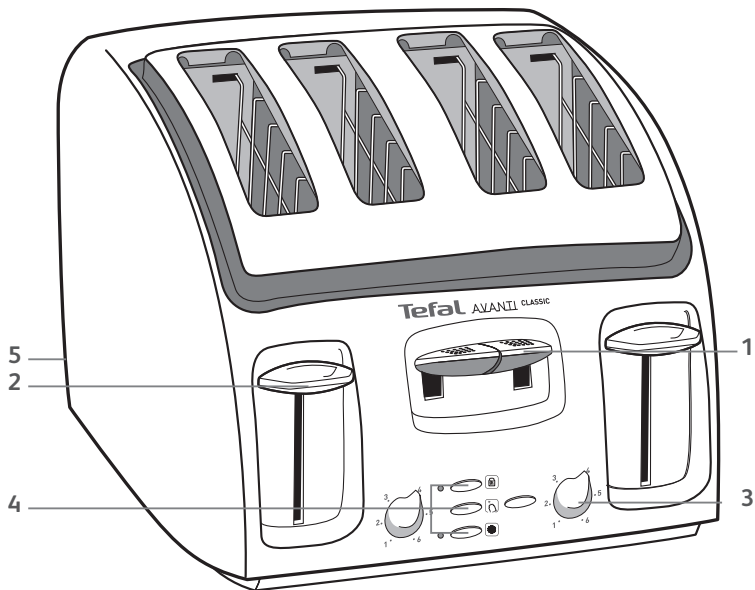
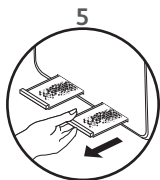
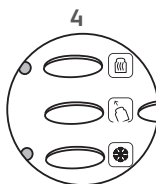
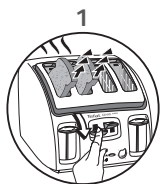


Tefal[®]

AVANTI CLASSIC

EN





SAFETY INSTRUCTIONS

IMPORTANT SAFEGUARDS:

- This appliance is not intended to be operated using an external timer or separate remote control system.
- ⚠️ • **For your safety, this appliance conforms with applicable standards and regulations (Directives on low voltage, electromagnetic compatibility, materials in contact with foodstuffs, environment, etc.)**
- ⚠️ • **In accordance with the CSC notice of 2/12/04, this product features a mechanical design allowing the bread ejection mechanism to be detached from the power cut-off element.**
- Check that the electricity supply voltage corresponds to the voltage indicated on the appliance (ac current only).
- Given the many standards in effect, if this toaster is used in a country other than the country where it was purchased, have it checked by an approved service centre (see enclosed after sales service information).
- Check that the electricity installation is sufficient to supply the power required by this appliance.
- Always plug the toaster into an earthed socket.
- Use extension leads which are in good condition, with an earthed connection, and with a minimum rating of 10A.
- ⚠️ • **This appliance is intended to be used in household only.**
It is not intended to be used in following applications, and the guarantee will not apply for:
 - staff kitchen areas in shops, offices and other working environments;
 - farm houses;
 - by clients in hotels, motels and other residential type environments;
 - bed and breakfast type environments.

TO PREVENT ANY ACCIDENTS

When using electrical appliances, basic safety precautions should always be followed:

DO:

- Carefully read and follow all the instructions for use.

- The toaster must always be used in the upright position, never on its side or tilted forwards or backwards.
- ⚠️ • **Before each use make sure that the crumb tray is fitted correctly.**
- Regularly remove crumbs from the crumb tray.
- The bread control lever must be in the "Up" position before plugging in or unplugging the appliance.
- Unplug the appliance if it shows any working abnormalities.
- Unplug from the power socket when not in use during and before cleaning. Allow to cool down before cleaning or storing.
- To unplug remove the plug from the wall socket (when the toasting cycle is finished).
- If the bread jams in the slots after toasting and the elements do not switch off, unplug the plug immediately and wait for the appliance to cool before attempting to remove the bread.
- Bread can burn; Therefore do not use this appliance near any flammable materials such as curtains, under shelving or under wall cupboards.
- Use on a flat, stable heat-resistant work surface, away from any contact with water and never use underneath a built in kitchen alcove.

DO NOT:

- Do not let the toaster operate unattended, particularly when toasting for the first time or when settings have been changed.
- Do not store the cord or the plug between the slots in the appliance.
- Do not unplug the appliance by pulling on the cord.
- Do not move or carry the appliance during use.
- ⚠️ • **This appliance is not intended for use by persons (including children) with reduced physical, sensory or mental capabilities, or lack of experience and knowledge, unless they have been given supervision or instruction concerning use of the appliance by a person responsible for their safety.**
- ⚠️ • **Children must be supervised to ensure that they do not play with the appliance.**
- Do not leave the appliance within the reach of children.

- Do not use outdoors. Avoid humid environments.
- Do not use the appliance for any other use other than that for which it was designed.
- Do not touch the metal parts or hot surfaces of the appliance when it is working.
- Oversized foods, metal foil packages, or utensils (spoon, knife, etc.) must not be inserted into a toaster as they may cause an electric shock or fire.
- Do not use accessory attachments that are not recommended by the manufacturer as this may be dangerous.
- To protect yourself against an electrical shock do not immerse the cord, plugs, or appliance in water or other liquids.

⚠ Do not place any sugar coated type of bread in the toaster or anything that may melt or drop into the toaster, do not toast small pieces of bread or croutons as this may cause damage to the toaster or a risk a fire.

⚠ Do not try to toast very thick slices of bread that could become stuck in the toasting slots.

- Do not use this appliance if:
 - it has a damaged cord.
 - the appliance has been dropped and has visible damage or does not operate properly.

In any of these instances, the appliance must be sent to your local approved after-sales service centre to avoid any risk of danger. Refer to the guarantee enclosed.

- If the supply cord is damaged, it must be replaced by the manufacturer, its service agent or similarly qualified persons in order to avoid a hazard.
- Do not let the cord hang over the edge of the worktop or come into contact with hot surfaces.
- Do not place on or near a gas burner, electric ring/hob, or near a heated oven.
- Do not cover this appliance while in use.

⚠ Bread can burn, therefore the appliance must not be used near or below curtains and other combustible materials such as curtains, drapes or wood (shelving, cupboards...) it should be attended when in use.

- Do not put paper towels, cardboard or plastic in, on or under the toaster.

⚠ If flames were to arise from parts of the toaster, never attempt to extinguish them with water. Unplug the appliance and smother the flames with a damp cloth.

- Do not attempt to dislodge food once the toasting cycle is engaged.
- Do not use this appliance as a source of heating or drying.
- Do not use the toaster for cooking, grilling or defrosting frozen food other than bread products.
- Do not use the appliance to toast bread and warm croissants (or similar products) at the same time (depending on model).
- The metal frame can become very hot. Do not touch it! Use an oven glove or tongs (depending on model).
- Do not use any abrasive cleaning agents (no soda-based scouring products, no scouring pads...), no metallic utensils, metal scouring pads etc.
- For appliances with a metallic finish: Do not use any cleaning products designed for metals: use a soft cloth with a window or glass cleaner.

SAVE THESE INSTRUCTIONS



Environment protection first !

- ① Your appliance contains valuable materials which can be recovered or recycled.
- ➔ Leave it at a local civic waste collection point.

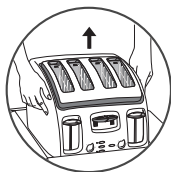
If you have any product problems or queries please contact our Helpline:

0845 602 1454 - UK

(01) 677 4003 - ROI

or consult our website: www.tefal.co.uk

Before first use



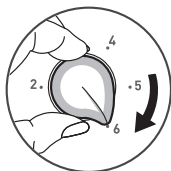
- Remove the toaster from packaging.



- Clean the toaster with a damp cloth.



- Plug the toaster into the wall outlet.



- Turn dial to maximum browning setting without inserting any bread.



- Press levers for 3 sequential toasting sessions to remove “new” smell.

Toasting bread



- Insert bread.



- Select browning level using dial control.



- Press down levers to start toasting.



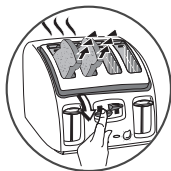
- The toasting begins.



- Toasting chamber automatically lifts toast and levers once toasting cycle is complete.

Hi-lift

To remove smaller-sized bread after the toasting cycle.



- Push down the hi-lift lever.



- Remove toast.

Stop/eject



- Press the stop button at any time to stop the toasting cycle.



- Toasting chamber automatically lifts toast and levers.

Reheat*

To reheat previously toasted bread without further toasting them, use the Reheat button.



- Insert toast (only in the 2 left slots).



- Press down the left lever to start toasting.



- Press REHEAT button.



- The toaster will come on for just a short time to heat up the bread that has already been toasted.



- Toasting chamber automatically lifts toast and lever once toasting cycle is complete.

Defrost*

To toast frozen bread, use the Defrost button.



- Insert frozen bread (only in the 2 left slots).



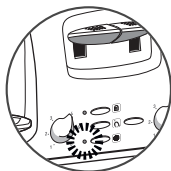
- Select browning level using dial control.



- Press down the left lever to start toasting.



- Press DEFROST button.



- Defrosting bread will take a little longer to toast as the toaster will automatically defrost the bread before toasting.



- Toasting chamber automatically lifts toast and lever once toasting cycle is complete.

Cleaning



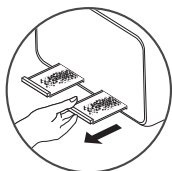
- Unplug the toaster from the wall outlet.



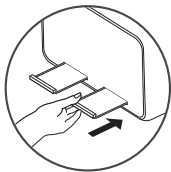
- Allow the toaster to cool completely, approximately 10 minutes.



- Clean the toaster with a damp cloth.

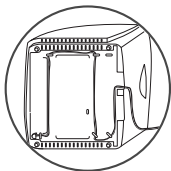


- To clean the toaster, unclip the crumb trays and wipe them clean.

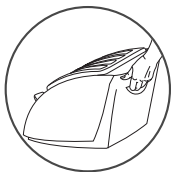


- Replace the crumb trays after cleaning.

Storage



- Never wrap the cord around the outside of the appliance during or after use. A cord storage is located under the appliance.



- To move the toaster, a carrying handle is located at the back of the appliance.

Do not



- Do not immerse the toaster in water or run water into the toaster.



- Do not operate the toaster under or around any flammable materials.



- Do not insert objects into the toaster.



- Do not place the toaster in the dishwasher.



- Do not cover the toast chambers when in use.



- Do not transport the toaster by grabbing the bread slots.
Do not put your hands in the bread slots.

