

SAFETY

- For your safety, this appliance complies with the applicable standards and regulations (Low Voltage Directive, Electromagnetic Compatibility, Environmental...).
- The appliance's accessories become very hot during use. Avoid contact with the skin. Make sure that the supply cord never comes into contact with the hot parts of the appliance.
- Check that the voltage of your electricity supply matches the voltage of your appliance. Any error when connecting the appliance can cause irreparable harm, not covered by the guarantee.
- For additional protection, the installation of a residual current device (RCD) having a rated residual operating current not exceeding 30 mA is advisable in the electrical circuit supplying the bathroom. Ask for installer for advice.
- The installation of the appliance and its use must however comply with the standards in force in your country.
- **WARNING:** do not use this appliance near bathtubs, showers, basins or other vessels containing water. 
- When the appliance is used in a bathroom, unplug it after use since the proximity of water presents a hazard even when the appliance is switched off.
- This appliance is not intended for use by persons (including children) with reduced physical, sensory or mental capabilities, or lack of experience and knowledge, unless they have been given supervision or instruction concerning use of the appliance by a person responsible for their safety. Children should be supervised to ensure that they do not play with the appliance.
- This appliance can be used by children aged from 8 years and above and persons with reduced physical, sensory or mental capabilities or lack of experience and knowledge if they have been given supervision or instruction concerning use of the appliance in a safe way and understand the hazards involved. Children shall not play with the appliance. Cleaning and user maintenance shall not be made by children without supervision.
- If the supply cord is damaged, it must be replaced by the manufacturer, its service agent or similarly qualified persons in order to avoid a hazard.

- Stop using your appliance and contact an Authorised Service Centre if:
 - your appliance has fallen.
 - it does not work correctly.
- The appliance is equipped with a heat-sensitive safety device. In the event of overheating (for example if the rear grill is blocked), the dryer will stop automatically: contact the After-Sales Service.
- The appliance must be unplugged: before cleaning and maintenance procedures, if it is not working correctly, as soon as you have finished using it, if you leave the room, even momentarily.
- Do not use if the cord is damaged.
- Do not immerse or put under running water, even for cleaning purposes.
- Do not hold with damp hands.
- Do not hold the appliance by the casing, which is hot, but by the handle.
- Do not unplug by pulling on the cord, rather pull out by the plug.
- Do not use an electrical extension lead.
- Do not clean with abrasive or corrosive products.
- Do not use at temperatures below 0°C and above 35°C.

GUARANTEE

Your appliance is designed for use in the home only. It should not be used for professional purposes. The guarantee becomes null and void in the case of improper usage.

ENVIRONMENT PROTECTION FIRST!



Your appliance contains valuable materials which can be recovered or recycled. Leave it at a local civic waste collection point.

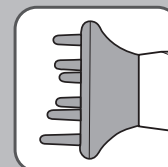
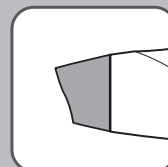
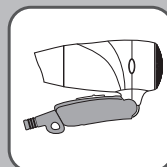
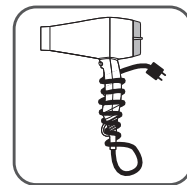
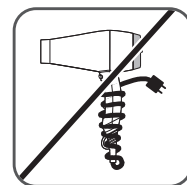
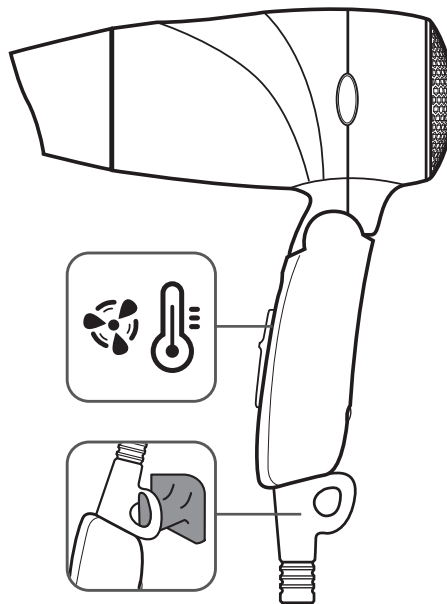
These instructions are also available on our website
www.tefal.com



Pocket dry


www.tefal.com

1820001551



EN • depending on model

安全指南

- 為保障您的安全，本電器符合現行標準及規章條例（低壓指令、電磁相容性、環保指令等...）。
- 使用期間，本電器的配件會變得燙手，切勿觸碰。電源線不得接觸本電器的發熱零件。
- 請檢查您電力系統的電壓是否與本電器相符。如連接本電器時出錯，會造成無法修復的損壞，且不受保用條款保障。
- 為加強保障，建議在浴室供電的電路中安裝額定動作電流不超過 30 mA 的電流式漏電斷路器 (RCD)。請向安裝服務供應商查詢。
- 本電器的安裝和使用須符合您所在國家/地區的現行標準。
- 警告：**切勿在浴缸、淋浴花灑、浴盆  或其他儲水容器附近使用本電器。
- 如於浴室使用本電器，使用後請即斷電，因本電器接近水源，即使已關機，仍有一定風險。
- 本電器不適合身體或心智殘障人士、或缺乏經驗和知識人士（包括兒童）使用，除非負責其安全的人士給予監管或指引有關本電器的使用方法。應照顧好兒童，確保他們不會把玩本電器。
- 8 歲及以上兒童，及身體、感官或心智殘障人士或缺乏經驗和知識人士，除非對本產品的安全使用方法獲得監督或指導，並且明白當中的危險，否則不得使用本產品。兒童不得把玩本電器。兒童不得在無人看管下對本產品進行清潔或保養。**
- 如果電源線損壞，必須由製造商、其服務代理或有類似資格的人員更換，以避免危險。

如果出現以下情況，切勿使用本電器，並請聯絡授權服務中心：

- 您的電器曾掉落；
- 電器運作異常；
- 本電器配備熱敏感應安全裝置。如出現過熱情況（如：背面網格被堵塞），本風筒會自動停機；請聯絡售後服務部。
- 進行清潔及保養程序前，本電器必須斷電；如本電器運作異常，即使您僅短暫離開房間，亦請於用完本電器後立即斷電。
- 如電線損壞，切勿使用本電器。
- 即使進行清潔，亦切勿將本電器浸水或沖水。
- 切勿用濕手握持本電器。
- 本電器的外殼燙手，請握持手柄，勿握持外殼。
- 為本電器斷電時，請拔出插頭，勿拉扯電線。
- 請勿使用電源延長線。
- 請勿使用任何磨蝕性或腐蝕性產品清潔本電器。
- 本電器的操作溫度介乎 0°C 至 35°C。

保養

您的電器僅適合家居內使用，不作專業用途。如使用不當，將令本保用失效作廢。

環保第一！



本電器含有多種具價值的可回收或循環再用物料。
請將其交往當地市政廢物回收站。

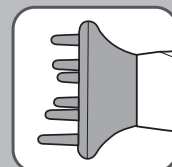
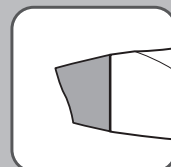
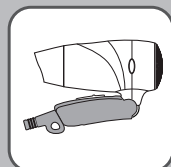
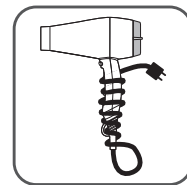
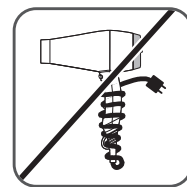
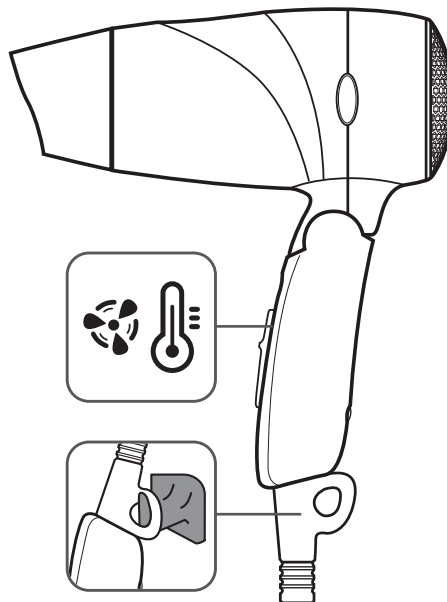
上述說明亦可於我們網站查看：www.tefal.com



Pocket dry

www.tefal.com

1820001551



ZH • 視乎型號而定