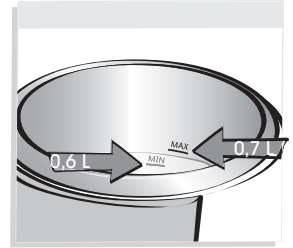




Min. 0,6 L



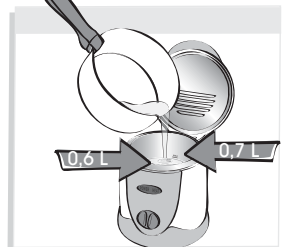
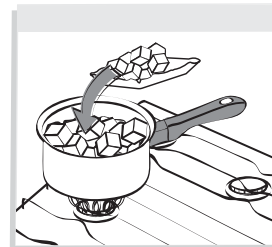
Max. 0,7 L

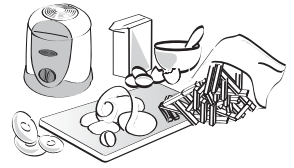


Min. 550 g



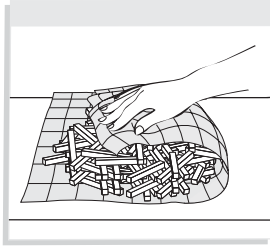
Max. 650 g



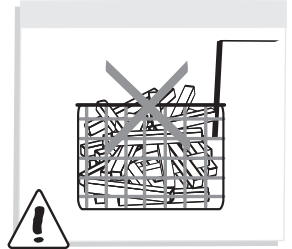
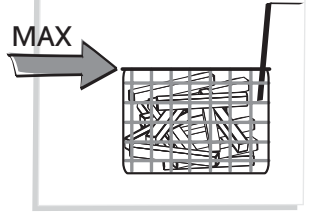


Max.

250 g



MAX

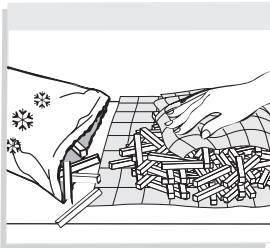


\*\*\*

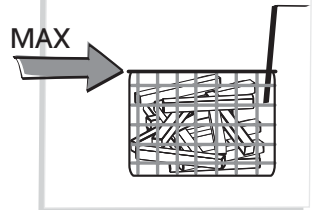


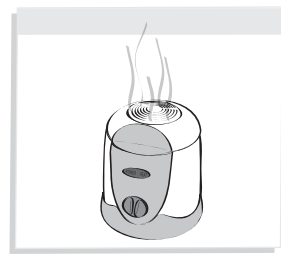
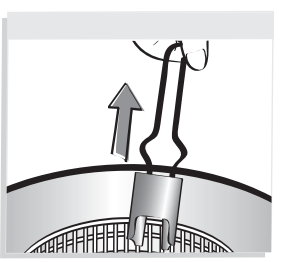
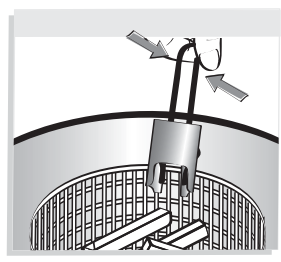
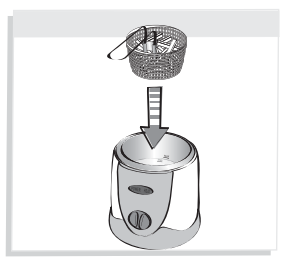
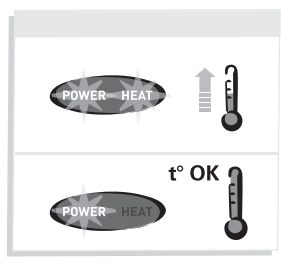
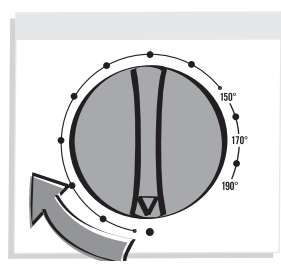
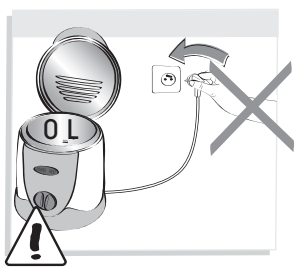
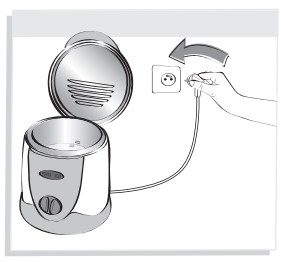
Max.

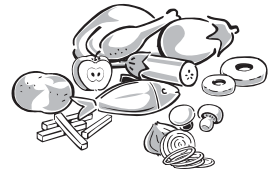
150 g



MAX







	250 g	180°C	7 - 9 min	-	-
	150 g	-	-	190°C	5 - 8 min
	200 g	170°C	2 - 4 min	190°C	3 - 5 min
	100 g	190°C	2 - 3 min	-	-
	150 g	150°C	2 - 3 min	190°C	3 - 4 min
	2	160°C	4 - 6 min	190°C	4 - 6 min
	100 g	180°C	3 - 5 min	190°C	3 - 5 min
	4 - 5	160°C	3 - 5 min	190°C	3 - 5 min

