

Tefal®

EN



DT70XX – DUAL VOLTAGE

www.tefal.com

Important safety instructions

When using your appliance, basic precautions should always be followed, including the following:

- Read all instructions before using this product.
- This product has been designed for indoor, domestic use only. Any commercial use, inappropriate use or failure to comply with the instructions, the manufacturer accepts no responsibility and the guarantee will not apply.
- Always plug your appliance:
 - into a mains circuit with voltage between 220 V and 240 V.
 - into an earthed electrical socket.
- **WARNING:** For use in 220-240 V countries, the voltage selector switch should be placed in the 220-240 V position. For use in several others countries, the voltage selector switch may need to be placed in the 110-120 V position.
- Confirm the voltage available at each location before using the appliance.
- For connection to a 110-120 V supply, use a suitable attachment plug adapter of the proper configuration for the power supply receptacle. Please ensure it meets the safety requirements of the country you are in.
- Be sure dual voltage selector is in correct voltage position before operating. Before plugging in, read the information about dual voltage operation contained in

the instruction section of this manual.

- This appliance was set at the factory to operate at 220-240 V. Refer to the Operating Instructions section of this manual for conversion to 110-120 V operation.
- If using a mains extension lead, ensure that it is correctly rated (16A) with an earth, and is fully extended.
- Completely unwind the power cord before plugging into an earthed socket.
- Use the appliance for its intended use only.
- To reduce the risk of contact with hot water emitting from steam vents, check the appliance before each use by holding it away from the body and operating the steam button.
- This appliance can be used by children aged from 8 years and above and persons with reduced physical, sensory or mental capabilities or lack of experience and knowledge if they have been given supervision or instruction concerning use of the appliance in a safe way and understand the hazards involved. Children shall not play with the appliance. Cleaning and user maintenance shall not be made by children without supervision.
- Never disconnect the appliance by pulling on the power cord; instead, grasp the plug and pull to remove from the socket outlet.
- Do not allow the cord to touch hot surfaces or come into contact with rough or sharp edges. Let the appliance cool completely down before putting away. Loop the

- cord loosely around the appliance when storing.
- Always disconnect the appliance from the electrical supply when filling with water or emptying when cleaning, when removing or refitting accessories and when not in use.
 - Care should be taken when using the appliance due to the emission of steam.
 - Do not operate the appliance with a damaged cord or if the appliance has been dropped or damaged. To avoid the risk of electric shock, do not disassemble or attempt to repair the appliance. Take it to the nearest approved service centre for examination and repair. Incorrect reassembly or repair could cause a risk of fire, electrical shock or injury to persons when the appliance is used.
 - Close supervision is necessary for any appliance being used by or near children.
 - Do not leave the appliance unattended while plugged in or while it is still hot.
 - Burns could occur from touching hot metal or plastic parts, hot water or steam. Use care when you empty a steam appliance. There may be hot water in the reservoir.
 - To protect against a risk of electric shock, do not immerse the appliance in water or other liquids.
 - Do not direct steam at people, animals or clothes while they are being worn.
 - This appliance is not intended for use by persons (including children) with reduced physical, sensory or mental capabilities, or lack of experience and

knowledge, unless they have been given supervision or instruction concerning use of the appliance by a person responsible for their safety. Children should be supervised to ensure that they do not play with the appliance.

- The use of accessory attachments other than those provided by the manufacturer is not recommended and may result in fire, electric shock or personal injury.
- The appliance must be rested on a stable, heat and water-resistant surface. When placing the appliance on its base, ensure that the surface on which the base is placed is stable.
- The appliance must not be used if it has been dropped, if there are visible signs of damage or if it is leaking.
- Check the electrical power cord for sign and wear or damage prior to use. If the electrical power cord is damaged, it must be replaced at an approved service centre to avoid any danger.
- Do not use other descaling products than the one cited in the IFU.

What water to use?

- Your appliance has been designed to use untreated tap water.

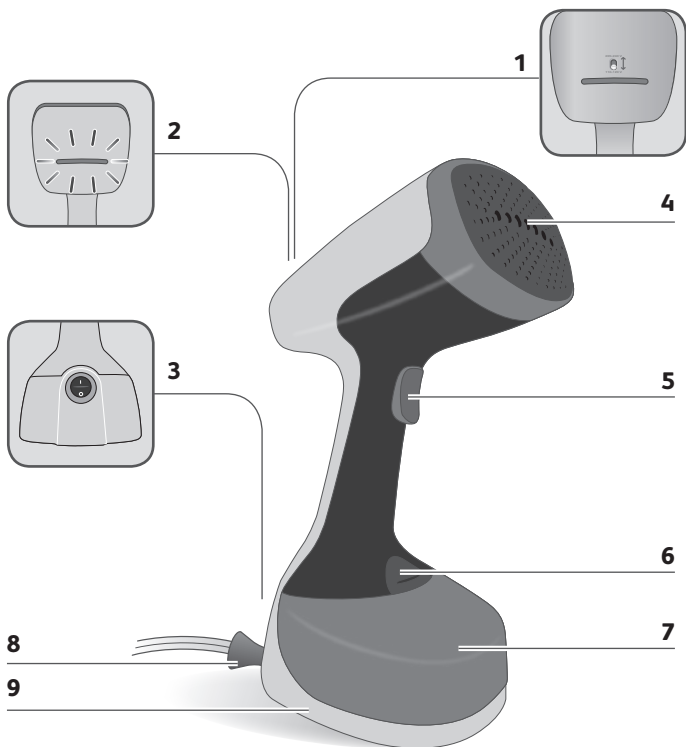
Do not use pure demineralised or pure distilled water, water from clothes dryers, scented or softened water, rain water, filtered, bottled or boiled water, water from refrigerators, batteries or air conditioners as these may damage the appliance. These types of water contain organic waste, mineral elements that become concentrated when heated and cause spitting, brown staining, leaking or premature wear on your appliance. If your water is very hard, mix 50% untreated tap water with 50% distilled water (available in hardware stores). This water contains organic waste materials or minerals that concentrate under the effect of heat and cause spitting, brown colouring or premature ageing of your appliance.

SAVE THESE INSTRUCTIONS

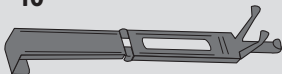


Environment protection first !

- ① Your appliance contains valuable materials which can be recovered or recycled.
- ♻️ Leave it at a local civic waste collection point.



10*



11*



12*

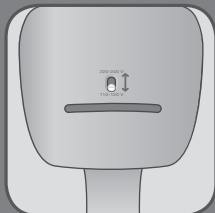


PRODUCT DESCRIPTION

- 1. EN** Voltage selector
(110-120V/220-240V)
- 2. EN** On/Off light indicator
- 3. EN** On/Off button
- 4. EN** Steam head
- 5. EN** Steam trigger
- 6. EN** Water tank locker
- 7. EN** Removable water tank
- 8. EN** Cord exit
- 9. EN** Standing base
- 10.* EN** Door hook
- 11.* EN** Steam cover
- 12.* EN** Fabric brush

* EN Depending on model

1 BEFORE USE



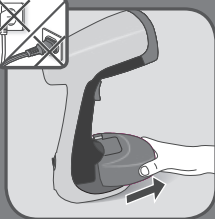
EN

Switch the voltage selector in the correct position (110-120V or 220-240V)



EN

Press the water tank locker.



EN

Remove the water tank.



EN

Open the water inlet stopper.



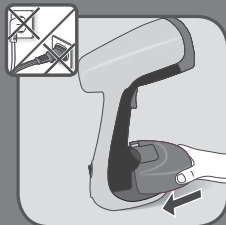
EN

Fill the water tank with a maximum of 150 ml of untreated tap water.



EN

Close the water inlet stopper.



EN

Return the water tank to its place for locking on the appliance. Make sure that the water tank is fully set in place.



EN

Hang your garment on a clothes hanger.

2 ACCESSORIES



EN

The door hook allows to hang your garment for steaming.



EN

The fabric brush opens the weaves of the fabrics for better steam penetration.

Before removing or attaching the steam brush, unplug your appliance and allow it to cool down, for one hour.



EN

The steam cover filters water impurities and protects fabrics from water drips.

Before removing or attaching the steam cover, unplug your appliance and allow it to cool down for one hour.

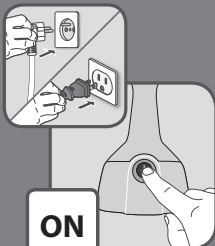
3 USE



EN

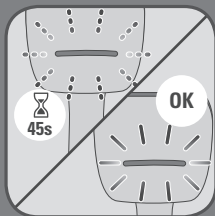
Switch the voltage selector in the correct position (110-120V or 220-240V)

WARNING Never switch the voltage selector while the unit is plug-in.



EN

Plug-in the appliance.
Switch on the appliance.



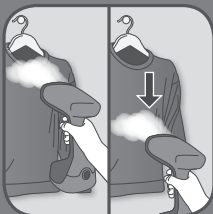
EN

Wait until the light stops flashing (approximately 45 seconds).
When the light is steady the appliance is ready to use.



EN

Press the steam button with the steam brush facing away from you holding it in a vertical position.



EN

For optimal use, pass the steam jets over your garment from top to bottom.



NO

EN

Warning : Never steam a garment while it is being worn.

OFF

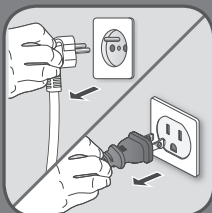


4 AFTER USE



EN

Press the On/Off button to switch the appliance off.



EN

Unplug the appliance.



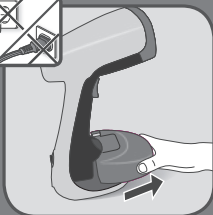
EN

Wait for an hour for your appliance to cool before storing.



EN

Press the water tank locker.



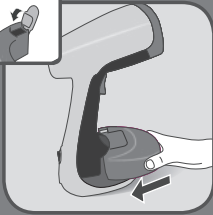
EN

Remove the water tank.



EN

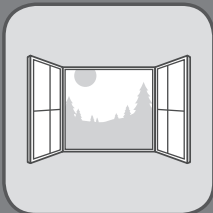
Empty the water tank completely.



EN

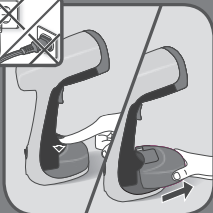
Return the water tank to its place on the appliance, lock it.

5 ANTI CALC



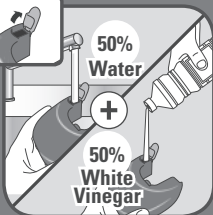
EN

Do this operation in a vented room.



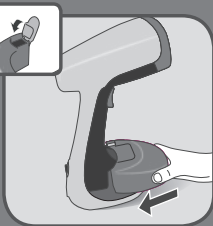
EN

Press the water tank locker.
Remove the water tank.



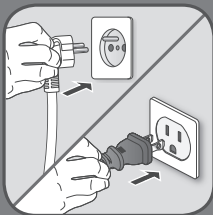
EN

Fill the water tank with 50% water and
50% white vinegar.
Do not use other descaling products.



EN

Return the water tank to its place on
the appliance. Make sure the water
tank is fully set in place and locked.



EN

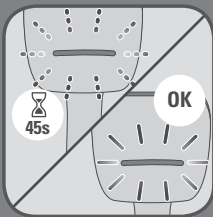
Plug-in the appliance.

ON



EN

Switch on the appliance.



EN

Wait until the light stops flashing (approximately 45 seconds).
When the light is steady the appliance is ready to use.



EN

To release steam, press continuously on the steam button.



EN

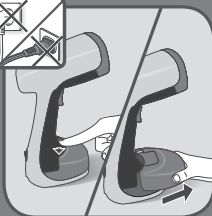
Allow the appliance to run until the water tank has completely emptied.

OFF



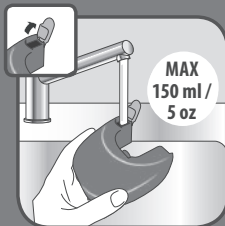
EN

Press the On/Off button to switch the appliance off.



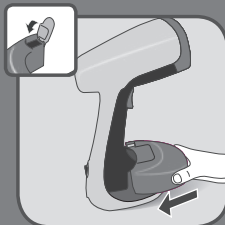
EN

Unplug the appliance and press the water tank locker.
Remove the water tank.



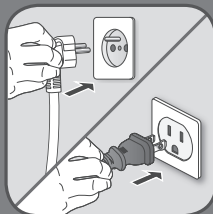
EN

Fill the water tank with a maximum of 150 ml of untreated tap water.



EN

Return the water tank to its place on the appliance. Make sure the water tank is fully set in place and locked.



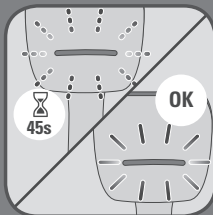
EN

Plug in the appliance.



EN

Switch on the appliance.



EN

Wait until the light stops flashing (approximately 45 seconds).

When the light is steady the appliance is ready.



EN

To release steam, press continuously on the steam button.



EN

Allow the appliance to run until the water tank has completely emptied.

6 CLEANING



1H



EN

Wait an hour for complete cool down.



EN

Only use a sponge with water to clean.



NO

EN

Never wash or rinse appliance directly over a sink.

IS THERE A PROBLEM ?

PROBLEMS	POSSIBLE CAUSES	SOLUTIONS
There is no steam.	The appliance is not plugged in, or not switched on.	Check that your appliance is correctly plugged in and switched on.
	The water level is too low.	Unplug your appliance and refill it.
	The steam pump has not been primed.	Press the steam trigger continuously for a few seconds to begin steaming.
	You are using the appliance for the first time.	Press the steam trigger continuously for a few seconds to begin steaming.
	The water tank is not fully in place.	Ensure that stopper is closed and that the water tank snaps when put into place.
The appliance does not heat.	It is not plugged in, or not switched on.	Plug in your appliance and switch on.
Water leaks.	The water tank is not fully in place or the stopper is not closed properly.	Ensure that stopper is closed and that the water tank snaps when put into place.
	The dual voltage is not set correctly.	Ensure that the dual voltage selector is in correct voltage position before operating. Unplug the appliance and switch the selector to the correct voltage.
Steam rate decreases.	Calc Sealing.	Refer to 'ANTI CALC' section in instructions for use.
The steam leaves stains on the fabric or the appliance spits.	You are using water with additives.	Never add any additive in the water tank.
	The appliance has not been cleaned enough after the descaling operation.	Read carefully the 'ANTI CALC' section in instructions for use.
	You are using other liquids than white vinegar to descale the product.	Use only white vinegar during 'ANTI CALC' procedure.
There is not enough power or too much.	The dual voltage is not set correctly.	Ensure that the dual voltage selector is in correct voltage position before operating. Unplug the appliance and switch the selector to the correct voltage.

