

Emeril™



Instructions for Use
T-fal

IMPORTANT SAFEGUARDS

When using electrical appliance, basic safety precautions should always be followed, including the following:

1. Read all instructions before using.
2. Do not touch hot surfaces. Use handles or knobs.
3. To protect against electrical shock do not immerse or partially immerse cord, plugs, or appliance in water or other liquid.
4. Not intended for use by children. Close supervision is necessary for any appliance being used by or near children.
5. Unplug from outlet when not in use and before cleaning. Allow to cool before putting on or taking off parts, and before cleaning the appliance.
6. Do not operate the appliance with a damaged cord or plug or after the appliance malfunctions, or has been damaged in any manner. Return the appliance to the nearest authorized service facility for examination, repair or adjustment.
7. The use of accessory attachments not recommended by the appliance manufacturer may cause injuries.
8. Do not use outdoors.
9. Do not let the cord hang over the edge of a table or counter, or touch hot surfaces.
10. Do not place on or near a hot gas or electric burner, or in a heated oven.
11. Do not use the appliance for other than intended use.
12. Before use, check that your local voltage corresponds with the specifications shown on the appliance nameplate located under the appliance.
13. Extreme caution must be used when moving an appliance containing hot oil or other hot liquids.
14. The temperature of accessible surfaces may be high when the appliance is operating.
15. Check that the electrical installation is compatible with the wattage and voltage stated on the bottom of the appliance.
16. If this appliance has a polarized plug (one blade is wider than the other), it is to reduce the risk of electric shock. This plug is intended to fit into a polarized outlet only one way. If the plug does not fit fully into the outlet, reverse the plug. If it still does not fit, contact a qualified electrician. Do not attempt to modify the plug in any way.
17. To disconnect the appliance, turn any control to minimum position, then remove plug from the wall outlet.
18. The appliance is only to be operated in the closed position.

SAVE THESE INSTRUCTIONS.

Safety instructions

- Never leave the appliance unattended when in use.
- Do not immerse the appliance or power cord in water.
- To prevent the appliance from overheating, do not place it in a corner or against a wall.
- Never leave the appliance plugged in when not in use.
- Do not place the hot plate under water or on a fragile surface.
- Cooking fumes may be dangerous for animals which have a particularly sensitive respiratory system, such as birds. We advise bird owners to keep them away from the cooking area.
- If you have any problems, contact the authorized after-sales service center or the internet address www.t-falusa.com.

Short Cord instructions

A short power-supply cord is to be provided to reduce the risk resulting from becoming entangled in or tripping over a longer cord.

Extension cords are available and may be used if care is exercised in their use.

If an extension cord is used :

- 1) The marked electrical rating of the cord or extension cord should be at least as great as the electrical rating of the appliance;
- 3) The longer cord should be arranged so that it does not drape over the countertop or table top where it can be pulled on by children or tripped over unintentionally.

THIS APPLIANCE IS INTENDED FOR DOMESTIC HOUSEHOLD USE ONLY.

Thank you for buying this appliance. Read the instructions in this leaflet carefully and keep them within reach. Any commercial use, inappropriate use or failure to comply with the instructions, the manufacturer accepts no responsibility and the guarantee will not apply.

For your safety, this product conforms to all applicable standards and regulations (Electric Safety, Food Compliant Materials, Environment, ...).

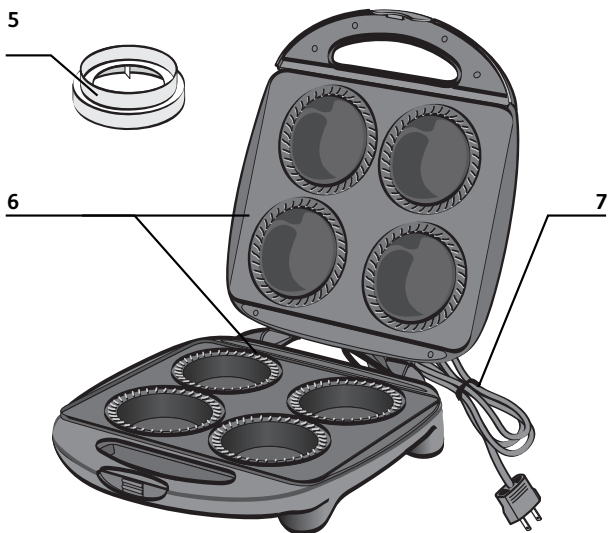
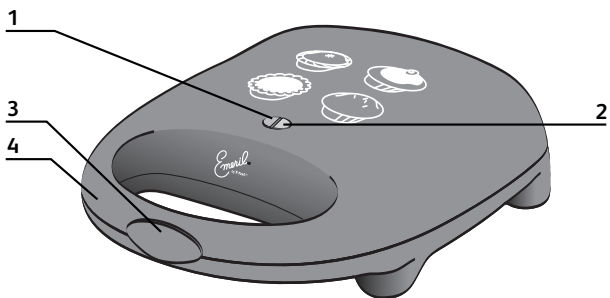
Our company has an ongoing policy of research and development and may modify these products without prior notice.

This appliance is not intended to be used in the following applications, and the guarantee will not apply for :

- staff kitchen areas in shops, offices and other working environments;
- farm houses;
- by clients in hotels, motels and other residential type environments;
- bed and breakfast type environments.

Prevention of accidents at home

- This appliance is not intended for use by persons (including children) with reduced physical, sensory or mental capabilities, or lack of experience and knowledge, unless they have been given supervision or instruction concerning use of the appliance by an adult responsible for their safety. Children should be supervised to ensure that they do not play with the appliance.
- Accessible surface temperatures can be high when the appliance is operating. Never touch the hot surfaces of the appliance, always use the handles.
- Never leave the appliance plugged in when not in use.



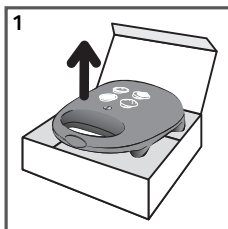
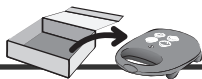
Description

- 1 - Operating indicator light
- 2 - Temperature ready indicator light
- 3 - Closure latch

- 4 - Handle
- 5 - Pastry cutter
- 6 - Plates

- 7 - Power cord

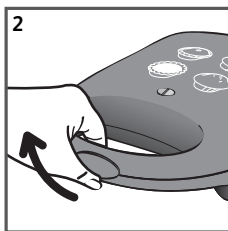
1 - Pie and Cake maker



Remove all packaging materials, stickers and accessories from the inside and the outside of the appliance. **(1)**

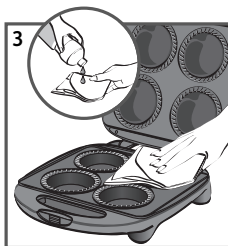
Never place the appliance directly on a fragile surface (glass table, tablecloth, varnished furniture, etc.) or on a soft surface such as a dish towel.

Always use the appliance on a flat, stable, heat-resistant work surface.



To prevent the appliance from overheating, do not place it in a corner or against a wall.

Open the appliance by lifting the closure latch **(2)**.



Before using for the first time, thoroughly clean the plates with warm water and dish soap.

Wipe over the plate using a paper towel dipped in a little cooking oil **(3)**.

Remove any surplus oil using a clean kitchen paper towel.

2 - Connection and pre-heating

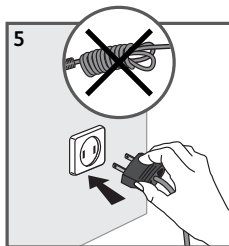


Close the appliance (4). Fully unwind the power cord.

Make sure that the electric power supply is compatible with the power rating and voltage indicated on the bottom of the appliance.

If an extension cord is used, take all necessary precautions to prevent anyone from tripping over it ; make sure to choose one of equivalent diameter.

If the power supply cord is damaged, it must be replaced by the manufacturer or its service agent or a similarly qualified person in order to avoid a hazard.

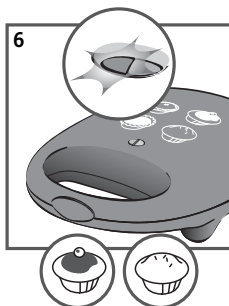


The power supply cord should be regularly examined for signs of damage, and if the cord is damaged, the appliance must not be used.

Plug the cord into the wall socket (5) .

On first use, there may be a slight odor and a little smoke during the first few minutes.

This appliance is not intended to be operated by means of an external timer or separate remote-control system.



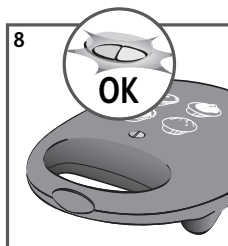
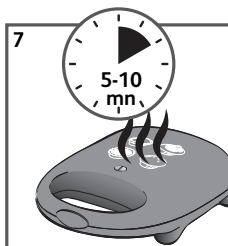
Once the appliance is plugged in, the red operating indicator light will turn on (6).

It will take around 5-10 minutes for the appliance to pre-heat (7).

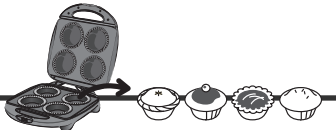
As soon as the appliance is pre-heated, the green indicator light will turn on. (8).

After pre-heating, the appliance is ready for use.

Pre-heating is necessary when making cakes and muffins, however, you should not pre-heat the appliance when making pies.



3 - Cooking

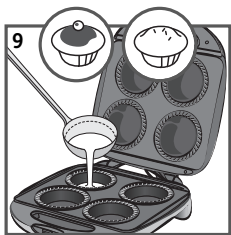


Do not move the appliance when in use.

To preserve the non-stick properties of the coating, do not cook food in aluminium foil.

Never leave the appliance unattended when in use.

Do not place cooking utensils on the cooking surface of the appliance.

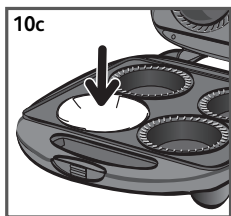
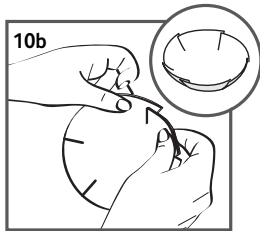
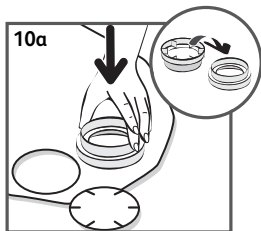


Never cut directly on the plates

Never run the appliance empty.

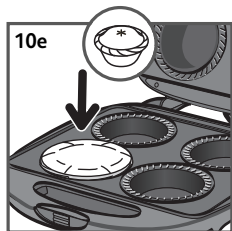
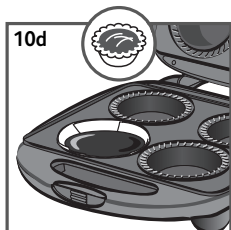
The green light will flash on and off regularly during the cooking process, to show that the temperature is maintained.

When making cakes and muffins, pre-heat the appliance and when the green light comes on, fill each well 2/3's full or about 1/3 cup of batter (9).



When making tarts and pies, do not pre-heat the appliance. Place your pastry directly into each well when the appliance is cool. Use the larger side of the pastry cutter to cut the bottom crust and the smaller side to cut the top crust (10 a).

Form the pastry as indicated in 10b to fit the wells perfectly (10c).

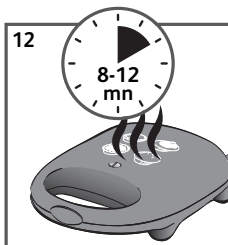


For tarts: fill each crust with your preparation (10d).

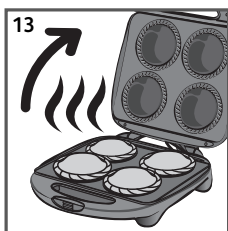
For pies, do the same and place the smaller crust on top (10e).



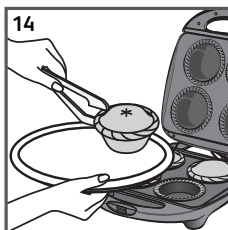
Close the appliance (11).



Allow to cook for 8 to 12 minutes depending on the preparation (12).

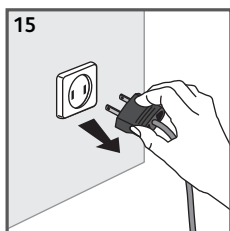


After completion of the baking process, open the appliance (13) and remove the baked items (14).

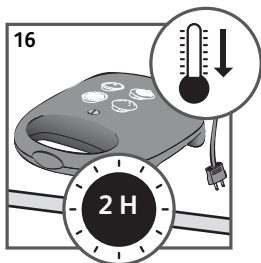


Always use a wooden or plastic spatula to avoid damaging the cooking plate.

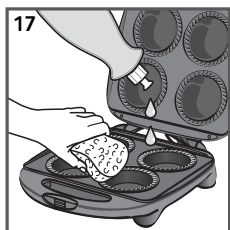
4 - After use



Unplug the appliance (15).



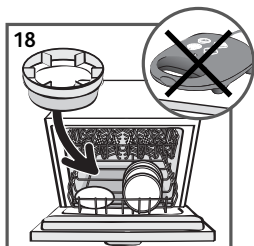
Let it cool down before moving and cleaning it (16).



Clean the plates and the body of the appliance with a sponge, hot water and dish soap (17).

Never immerse the appliance or power supply cord in water. They are not dishwasher safe.

Never use metal scourers or scouring powder to avoid damaging the cooking surface.



The pastry cutter can be washed in a dishwasher (18).

www.t-fal.com

Ref. 2016288191 - 01/11