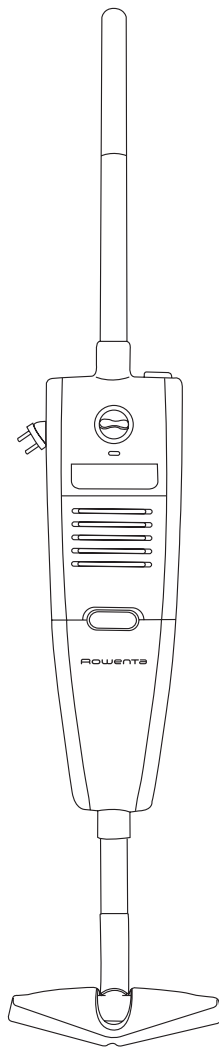


# ROWENTA

## C O R D Y



**Aspirateur balai • Sweeper vacuum cleaner • Handstaubsauger  
Steelstofzuiger • Scopa elettrica • Aspirador escoba • Aspirador vertical  
Ηλεκτρική σκούπα • Elektrik Süpürgesi**



### français

I. DESCRIPTION	2
II. CONSEILS ET PRÉCAUTIONS	2
III. AVANT UTILISATION	2
IV. ASPIRATION	3
V. RANGEMENT	3
VI. ENTRETIEN ET NETTOYAGE	4
VII. POUR VOTRE SÉCURITÉ...	5
VIII. QUE FAIRE SI...	5

### español

I. DESCRIPCIÓN	22
II. CONSEJOS Y PRECAUCIONES	22
III. ANTES DE UTILIZAR	22
IV. ASPIRAR	23
V. ALMACENAMIENTO	23
VI. MANTENIMIENTO Y LIMPIEZA	24
VII. PARA SU SEGURIDAD...	25
VIII. QUÉ HACER SI...	25

### english

I. DESCRIPTION	6
II. HINTS AND PRECAUTIONS	6
III. BEFORE USE	6
IV. VACUUMING	7
V. STORING	7
VI. MAINTENANCE AND CLEANING	8
VII. FOR YOUR SAFETY...	9
VIII. WHAT TO DO IF...	9

### português

I. DESCRIÇÃO	26
II. CONSELHOS E PRECAUÇÕES	26
III. ANTES DE UTILIZAR	26
IV. ASPIRAR	27
V. ARRUMAR	27
VI. MANUTENÇÃO E LIMPEZA	27
VII. PARA SUA SEGURANÇA	29
VIII. O QUE FAZER SE...	29

### deutsch

I. GERÄTEBESCHREIBUNG	10
II. HINWEISE	10
III. VOR DER BENUTZUNG	10
IV. SAUGEN	11
V. AUFBEWAHRUNG	11
VI. REINIGUNG UND PFLEGE	12
VII. ZU IHRER SICHERHEIT...	13
VIII. WAS MACHEN, WENN...	13

### ελληνικά

I. ΠΕΡΙΓΡΑΦΗ	30
II. ΣΥΜΒΟΥΛΕΣ ΚΑΙ ΠΡΟΦΥΛΑΞΕΙΣ	30
III. ΠΡΙΝ ΤΗΝ ΧΡΗΣΗ	30
IV. ΣΚΟΥΠΙΣΜΑ	31
V. ΑΠΟΘΗΚΕΥΣΗ	31
VI. ΣΥΝΤΗΡΗΣΗ ΚΑΙ ΚΑΘΑΡΙΣΜΟΣ	32
VII. ΓΙΑ ΤΗ ΔΙΚΗ ΣΑΣ ΑΣΦΑΛΕΙΑ...	33
VIII. ΤΙ ΝΑ ΚΑΝΕΤΕ ΕΑΝ...	33

### nederlands

I. BESCHRIJVING	14
II. RAADGEVINGEN EN VOORZORGSMAATREGELEN	14
III. VÓÓR HET EERSTE GEBRUIK	14
IV. OM TE ZUIGEN	15
V. OPBERGEN	15
VI. REINIGEN EN ONDERHOUDEN	16
VII. VOOR UW VEILIGHEID...	17
VIII. WAT TE DOEN ALS...	17

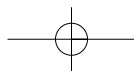
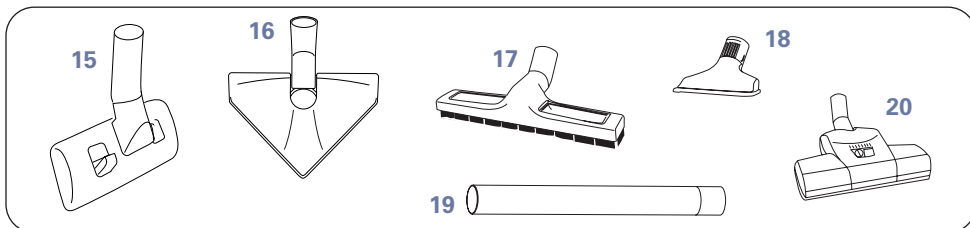
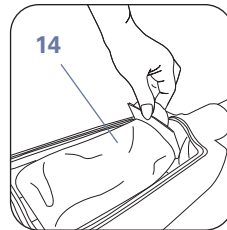
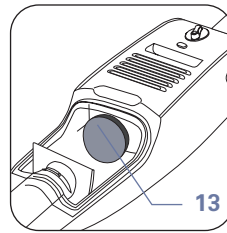
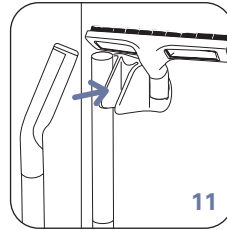
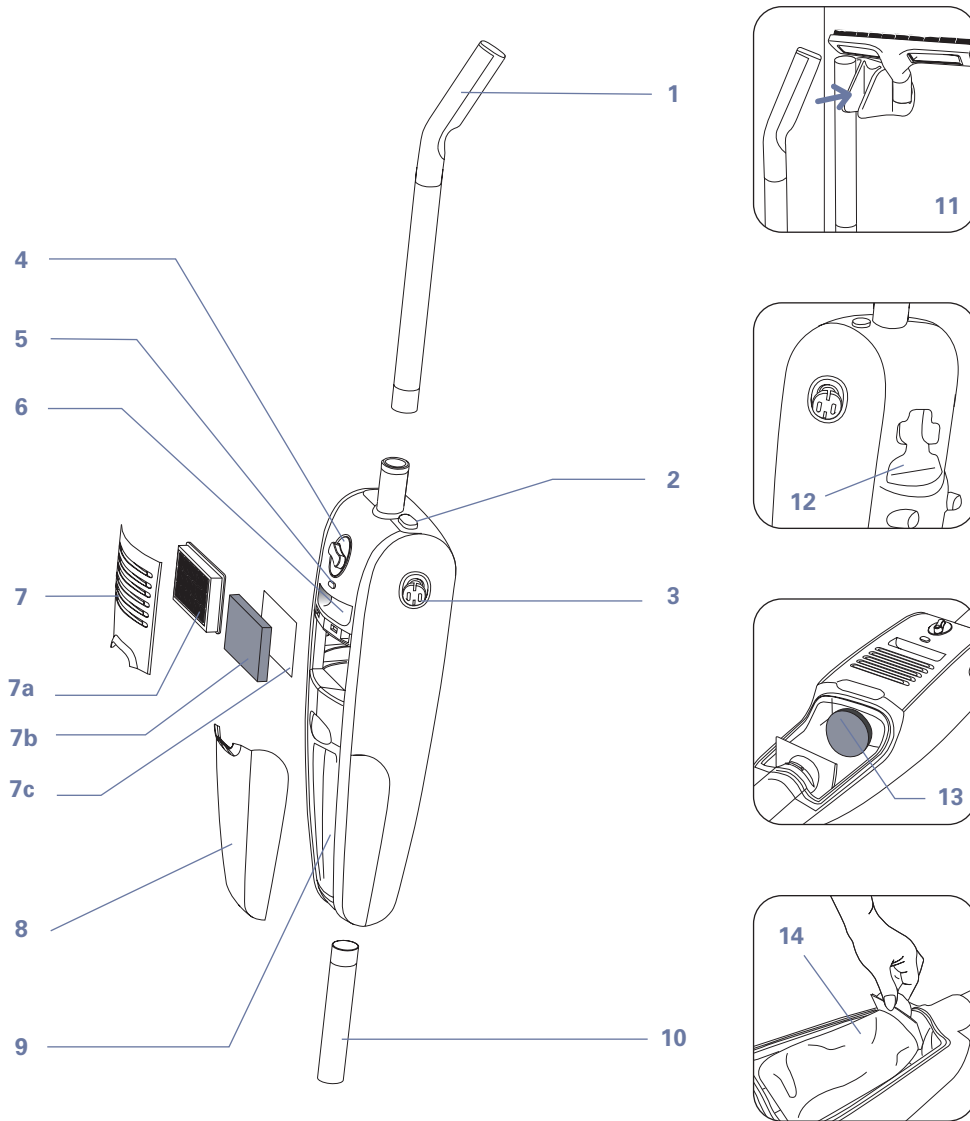
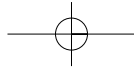
### türkçe

I. AÇIKLAMA	34
II. İPUÇLARI VE ÖNLEMLER	34
III. KULLANMADAN ÖNCE	34
IV. SÜPÜRME	35
V. SAKLAMA	35
VI. BAKIM VE TEMİZLİK	36
VII. GÜVENLİK İÇİN...	37
VIII. SORUN ÇIKTIĞINDA YAPMANIZ GEREKENLER...	37

### italiano

I. DESCRIZIONE	18
II. CONSIGLI E PRECAUZIONI	18
III. PRIMA DELL'USO	18
IV. ASPIRARE	19
V. RIPORRE	19
VI. PULIZIA E MANUTENZIONE	20
VII. PER LA VOSTRA SICUREZZA...	21
VIII. COSA FARE SE...	21





english

## I • DESCRIPTION

1. Soft touch handle
2. Supply cord rewind switch
3. Electric plug
4. On/Off switch and electronic power control
5. Electronic dustbag full indicator
6. Carrying handle
7. Air outlet grid
  - a. Antibacteria\* filter cartridge\*
  - b. Air outlet foam filter\*
  - c. Antibacteria\* micro-active filter\* (ref. Kit ZR 0004)

Your vacuum cleaner is equipped either with a filter\* (a) or with a foam filter\* and a micro-active filter\* (b + c).

8. Dustbag compartment opening

9. Dustbag compartment
10. Lower tube
11. Storage kit\*
12. Upholstery nozzle storage compartment
13. Motor foam filter protection
14. Paper antibacteria dustbag\* (ref. Kit ZR 0004)

### Accessories

15. 2 positions floor head (floors – carpets)\*
16. Delta nozzle\*
17. Wooden flooring nozzle\*
18. Integrated upholstery nozzle
19. Extension tube
20. Turbobrush\*

\* According to model: it refers to equipment specific to certain models or accessories available as options.

## II • HINTS AND PRECAUTIONS

Before each use the supply cord should be completely unwound. Do not allow it to become trapped or be pulled over sharp edges. Do not move the vacuum cleaner by pulling its cord, the appliance must be moved by its carrying handle. Never lift the appliance by its cord. If you use an extension cord, make sure that it is in perfect condition and appropriate to the power rating of your appliance. Never unplug the appliance by pulling on the cord.

Only use original Rowenta accessories. Check that all the filters are properly in place. Never turn the appliance on without a dustbag and filters.

If you encounter any difficulties in obtaining dustbags and filters for this appliance, please contact Rowenta Helpline:

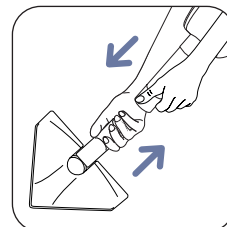
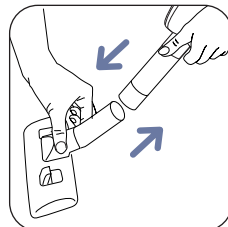
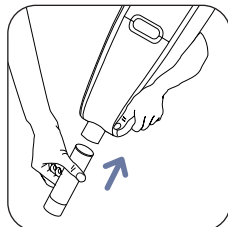
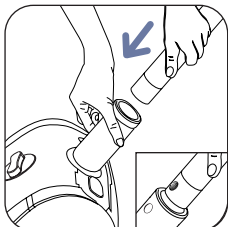
0845 602 1454 - UK

(01) 4751947 - IRELAND

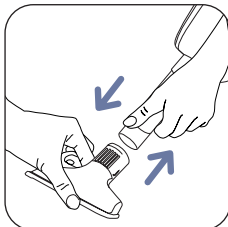
or visit our web site : [www.rowenta.uk.co](http://www.rowenta.uk.co)

## III • BEFORE USE

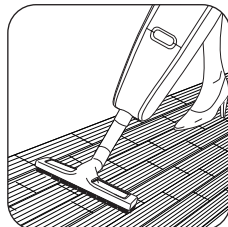
### Assemble your vacuum cleaner



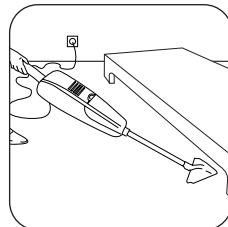
### Select the right accessory



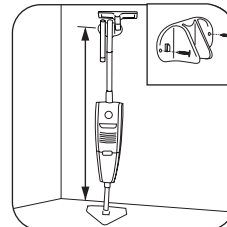
For furniture or for fragile surfaces



For wooden flooring



For vacuuming in high places or under furniture (accessory n° 19)

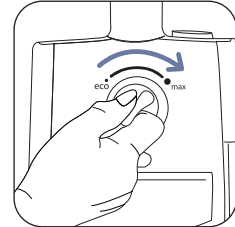
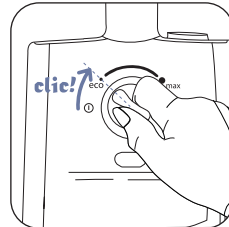
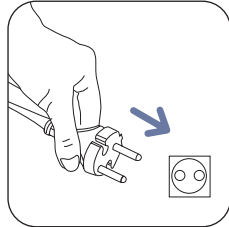
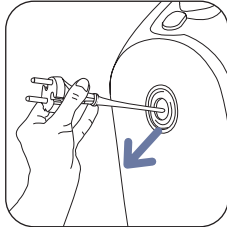


Fix the storage kit\* on the wall as indicated (screws not provided)

## IV • VACUUMING

english

Turn on your appliance and adjust the suction power



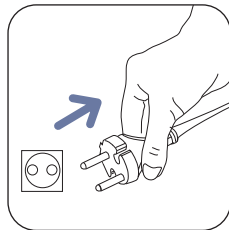
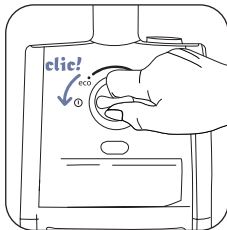
### CAUTION!

Never turn the appliance on without a dustbag and filters.

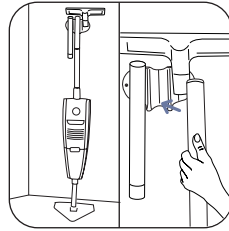
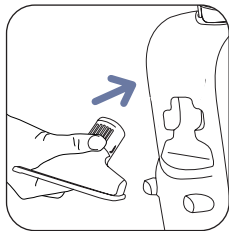
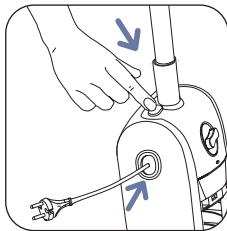
Max : floors

Eco : furniture, delicate fabrics...

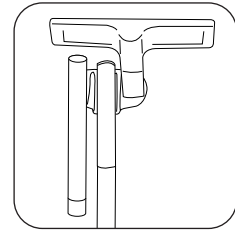
Turn off your appliance



## V • STORING



Storage kit\*



Storing accessories on the storage kit\*

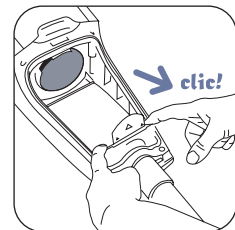
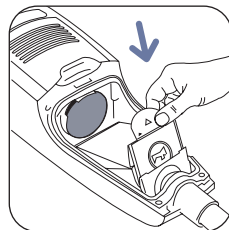
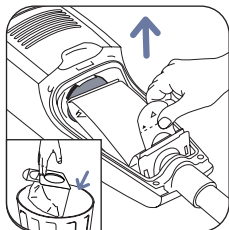
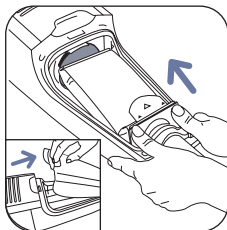
## VI • MAINTENANCE AND CLEANING

CAUTION! Always turn off and unplug your appliance before maintenance or cleaning.

Change the dustbag (ref. Kit ZR 0004)

The dustbag full indicator informs you that the bag is full or blocked with dust particles.

If the suction is weak, the nozzle is off the ground and the suction power is on maximum, change the dustbag.



\* According to model: it refers to equipment specific to certain models or accessories available as options.

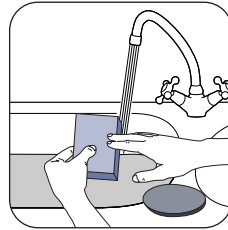
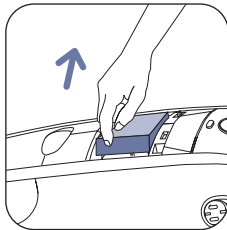
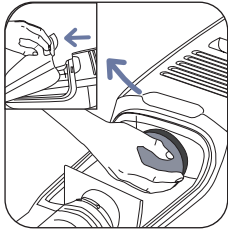
english

**IMPORTANT!**

Every 6 changes of the dustbag:

- clean the motor protection foam filter or the air outlet filter\* with warm, soapy water (using a gentle detergent). Rinse and leave to dry before putting back into place.
- replace the micro-active filter\* every 6 changes of the dustbag.

**Cleaning the motor protection or the air outlet foam filter\***

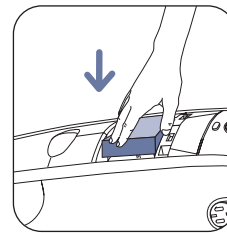
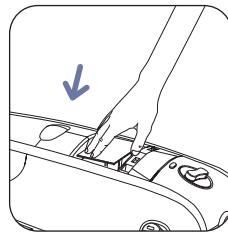
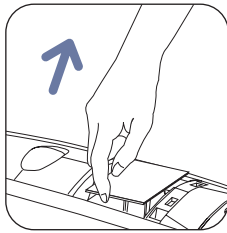
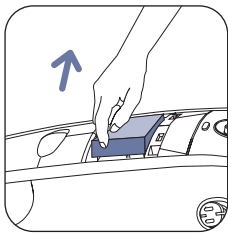


**CAUTION!**  
The motor protection foam filter should always be in place during use.

**IMPORTANT!**

Let the foam filters dry completely before replacing.

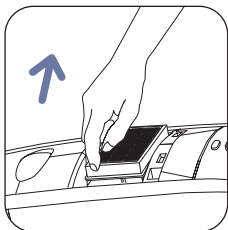
**Replacing the micro-active filter\* (ref. Kit ZR 0004)**



**IMPORTANT!**

The micro-active filter\* is under the air outlet foam filter\*.

**Replace the filter cartridge\* (ref ZR 0005)**

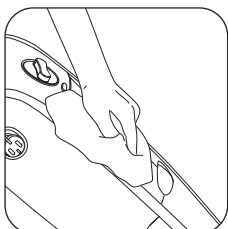


**IMPORTANT!**

When using the filter cartridge\*, do not use the air outlet foam filter\* nor the micro-active filter\*.  
Change the filter-cartridge every 9 to 12 months (depending on the frequency of use).

**Cleaning your vacuum cleaner**

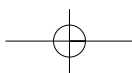
Clean the housing of the vacuum cleaner with a soft and humid cloth and let dry.



**IMPORTANT!**

Do not use strong, inflammable or abrasive cleaning products.

\* According to model: it refers to equipment specific to certain models or accessories available as options.



## VII • FOR YOUR SAFETY

english

### Read the instructions carefully and keep them in a safe place.

- Your vacuum cleaner is an electrical appliance: it must only be used under normal operating conditions. The appliance should be used and stored out of the reach of children. Never leave the appliance unattended when switched on. Always keep nozzles and tube ends away from eyes and ears.
- Make sure that the operating voltage of your vacuum cleaner is the same as your supply voltage.
- Unplug the appliance by removing the plug from the power outlet, without pulling the supply cord: immediately after use, before changing any accessories, before cleaning, maintenance or changing the filter.
- Do not vacuum wet surfaces, any kinds of liquids, hot substances, ultra-fine particles (plaster, cement, ash, etc.) large, sharp debris (glass) dangerous products (solvents, stripping compounds etc.), chemical products (acid, cleaning fluids, etc), inflammable or explosive products (petrol- or alcohol-based).
- Do not immerse the appliance in water, and do not store it outdoors.
- Do not use the appliance, if:
  - it has been dropped, and shows visible signs of damage or functions abnormally,
  - the supply cord is defective.

If this is the case, do not open the appliance but contact an authorised service center (see overleaf).

- Repairs should only be carried out by specialists using original replacement parts. It is dangerous to try to repair an appliance by yourself and will negate the guarantee.
- Vacuum cleaner supply cords and winding systems must, in all cases, be replaced by our Approved Service Centre, as special tools are needed to avoid accidents during repairs.
- In accordance with current legislation, before disposing of an appliance no longer in use, the appliance should be made non-operational by unplugging it and cutting off the electricity supply cord.
- This appliance is designed for domestic use only. In case of any professional or inappropriate use or failure to comply with the instructions, the manufacturer accepts no responsibility and the guarantee will no longer apply.

**Your appliance conforms to the 73/23 EEC and 89/336 EEC directives.**

## VIII • WHAT TO DO IF ...

**Important! As soon as your vacuum cleaner starts to malfunction, and before performing any checks: stop the appliance by pressing the On/Off switch and unplug the appliance.**

**Your vacuum cleaner will not start or does not suck.**

- The appliance is not connected: **check that the appliance is correctly plugged in.**
- Either a tool or the tube is blocked: **unblock the tool or the tube.**

**Your vacuum cleaner's suction power is defective, noisy, whistles.**

- A tool or the hose is partially blocked: **unblock the tool or the tube.**
- The dustbag is full or blocked with fine dusts: **replace the dustbag.**
- A foam filter and/or the micro-active filter\* are saturated: **clean the foam filters and replace the micro-active filter\*.**
- The filter cartridge\* is saturated: **change the filter cartridge\*.**
- The electronic power control is on eco: **increase power using the electronic power control (except when vacuuming delicate fabrics).**

**It is hard to move the nozzle:** **reduce the power.**

**The dustbag full indicator remains lit:** **the dustbag is full, replace it.**

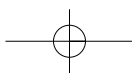
**The power cord does not fully retract:** **pull the cord out completely and press on the cord rewind switch.**

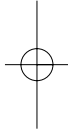
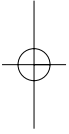
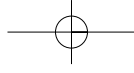
**If a problem persists, take the appliance to the nearest Rowenta Authorised Service Centre. See the list of Rowenta Authorised Service Centres or contact the Rowenta Consumer Service:**

**0 845 602 1454 - UK**

**(01) 4751947 - IRELAND**

\* According to model: it refers to equipment specific to certain models or accessories available as options.





**Rowenta**

