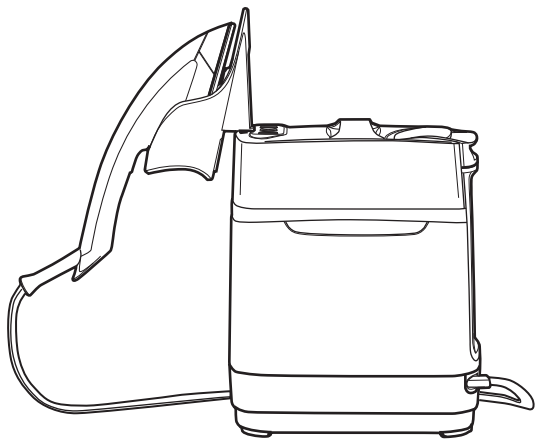


Tefal[®]

Cube

EN




UR20XX

Important Safety recommendations

Safety instructions and guidelines

- Read the instruction manual carefully before using your appliance for the first time. This product is designed for domestic and indoor use only. Any commercial use, inappropriate use or failure to comply with the instructions, the manufacturer accepts no responsibility and the guarantee will not apply.
- The appliance must not be left unattended while it is connected to the supply mains.
- Do not unplug your appliance by pulling on the power cord. Always unplug your appliance:
 - before filling the water tank or rinsing the boiler
 - before cleaning the appliance,
 - after each use.
- Never fill the appliance directly from the tap.
- The appliance does not work without the scale collector (depending on the model).
- The appliance must be used and rested on a flat, stable and heat-resistant surface.
- When you place the iron on its stand or on a separated base, ensure that the surface on which the stand or the separated base is placed is stable.
- Do not place the separated base on the ironing board cover or on a soft surface.
- This appliance is not intended for use by individuals (including children) with reduced physical, sensory or mental capabilities,

or lack of experience and knowledge, unless they have been given supervision by a person responsible for their safety.

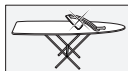
- Children must be supervised to ensure that they do not play with the appliance.
- This appliance may be used by children aged 8 years and older and by individuals lacking experience or knowledge or with reduced physical, sensory or mental capabilities, provided that they have been thoroughly instructed regarding the use of the appliance, are supervised, and understand the risks involved. Children must not play with the appliance. Cleaning and user maintenance shall not be made by children without supervision.
- Keep the appliance and its power cord out of reach of children under 8 years of age when it is in use or cooling down.
-  The surfaces of your appliance can reach very high temperatures when functioning, which may cause burns. Do not touch the hot surfaces of the appliance (accessible metal parts and plastic parts adjacent to the metallic parts).
- It is very important not to use descaling products (vinegar, industrial descalers, etc.) to rinse the boiler, as they may damage it.(depending on model)
- Before emptying the boiler/rinsing the collector, always wait until the appliance has cooled down and has been unplugged for over 2 hours before loosening the drainage/collector cap.
- Caution: If the cap or drainage cap is damaged, have it replaced by an approved service centre.
- The filling or decalcifying or rinsing or inspection apertures that are under pressure, must not be opened during use.
- Do not use other decalcifying products than the one cited in the Instruction for use
- Care should be taken when using the appliance due to emission of steam
- Unplug the appliance during cleaning & filling

- The appliance must not be used if it has been dropped, if it appears to be damaged, if it is leaking or is not working correctly.
- Do not attempt to dismantle your appliance: take it to an approved service center to avoid any danger.
- If the power cord or steam cord of your appliance is damaged, it must be replaced by an approved service centre in order to avoid any danger.
- Before storing the appliance, once it is unplugged, please wait until it has cooled down completely (around 1 hour).

- All accessories, consumables and removable parts must be bought only from an approved service centre.
- For your safety, this appliance conforms to all applicable regulations (Low Voltage, Electromagnetic Compatibility and Environment Directives, etc.).
- Your appliance is an electrical appliance: it must be used under normal conditions of use.
- It is equipped with 2 safety systems (depending on model):
 - a valve to prevent the build-up of pressure, which allows excess steam to escape in the event of the appliance malfunctioning,
 - a thermal fuse to prevent overheating.
- Always plug your appliance:
 - into a mains circuit with voltage between 220 V and 240 V (Alternating current only),
 - into a socket outlet with an earth connection.

Faulty connection can cause irreparable damage to the appliance and will invalidate your guarantee.

- If you are using an extension cord, ensure that it is correctly rated (16A) with an earth connection and is fully extended.
- Fully unwind the power cord before plugging it into an earthed plug socket.
- Never touch the power cord or steam cord with the soleplate of the appliance. Do not leave the power cord or steam cords close to or in contact with sources of heat or sharp edges.
- The water in the appliance may still be hot and cause burns even after 2 hours of cooling down. Handle the appliance with care when the cap/collector is removed, particularly when you are emptying it.
- Your appliance emits steam that may cause burns.
 - Handle the iron with care, particularly when using the vertical steam function.
 - Never steam clothing when it is worn by a person, always steam it on a hanger.
 - Never iron in a seated position with your legs below the ironing board.
 - Never direct the steam towards people or animals.
- The first time the appliance is used, there may be some reject of particles, fumes and smell but this is not harmful.
- Never immerse your appliance in water or any other liquid. Never place it under tap water.
- Careful during the assembly of the product & the board to pinch risks (depending on model)
- Never place the flat iron on the ironing board, always use the iron rest. Similarly, never place the separated base on the ironing board (depending on model)



Important notice for appliances $\geq 2200W$ only :

Under unfavorable mains conditions, phenomena like transient voltage drops or lighting fluctuations can happen. Therefore, it is recommended that the iron is connected to a power supply system with a maximum impedance of 0,29 Ω . If necessary, the user can ask the public power supply company for the system impedance at the interface point.

What water should I use?

- This appliance has been designed to be used with untreated tap water. If your water is very hard, (hardness above 30°F, or 17°dH or 21°e) use a mixture of 50% tap water and 50% distilled water. In some seaside regions, salt content might be high. In that case, use only water bottle, with low mineral level.
- They are different type of softened water, and most of them can be used in your appliance. However, some of them, especially the one with chemical components, like salt, might occur white or brown runs. If you face this type of issue, we recommend you to use non-treated tap water or bottled water.

- You should not use water from domestic appliances, with additives (starch, perfume, etc.) , rain water, boiled, filtered, bottled water. Do not use pure distilled nor pure demineralized water. Such water might affect steam attributes and at high temperature generate steam chamber sediment, liable to stain your linen and cause early appliance aging.

SAVE THESE INSTRUCTIONS



Help protect the environment!

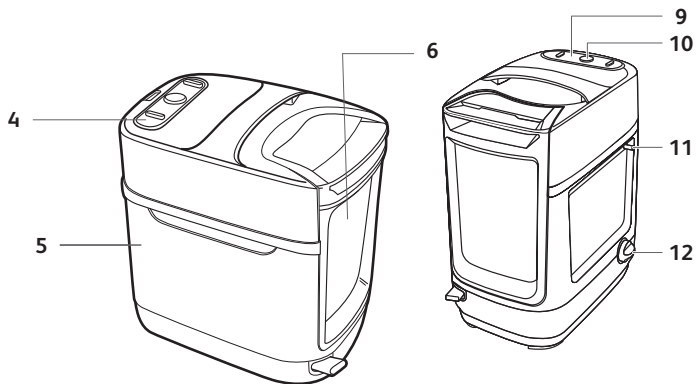
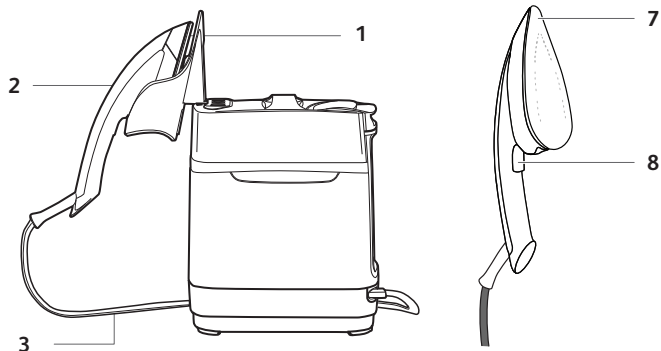
- Your appliance contains a number of recoverable or recyclable materials.
- Take these to a collection centre, or to an approved service centre for processing.

Troubleshooting problems with your appliance

PROBLEMS	CAUSES	SOLUTIONS
Water is dripping from the holes in the soleplate	The water has condensed in the tubes because you are using the steamer for the first time or have not used it for a while.	Press the steam button away from your ironing board until the iron emits steam.
	The soleplate is not hot enough to produce steam.	Set the appliance to the steam zone* (see user manual).
Traces of water appear on the laundry	Your ironing board cover is saturated with water as it is not suitable for the power of your appliance.	Ensure you use a suitable ironing board (a mesh ironing board which prevents condensation).
White streaks are dripping from the holes in the soleplate	Your boiler is emitting limescale as it is not rinsed regularly.	Rinse the boiler as instructed in the user manual.
Brown streaks are dripping from the holes in the soleplate and staining the laundry	You are using chemical descaling agents or additives in the water.	Never add any product to the boiler (see the section "What water should I use?")
The soleplate is dirty or brown and may mark the laundry	The appliance is being used on too high a temperature.	Clean the soleplate as instructed in the user manual. Use a lower temperature.
The soleplate is scratched or damaged	You have placed your iron flat down on the metal iron rest.	Always place your iron on its heel or on the iron rest.
The red "WATER" indicator light is flashing*	You have not filled the water tank.	Fill in the water tank and press the "OK" button located on the control panel until the indicator light goes off.
	You have not pressed the "OK" button.	Press the "OK" button located on the control panel until the indicator light goes off.
The "anti-scale" indicator light is flashing*	You have not pressed the "OK" button.	Press the "OK" button located on the control panel until the indicator light goes off.
The appliance will not turn on or the iron indicator light and the "ON-OFF" indicator light will not turn on.*	The "auto-off" system is activated after non-use and has turned off your appliance.	Press the "ON-OFF" restart button located on the control panel.
The red "WATER" indicator light is flashing and the "ON-OFF" button is not working.*	The appliance has been stored in a cold area (around <math>< 10^{\circ}\text{C}</math>)	Unplug the appliance. Leave the appliance for 3 hours until it reaches ambient temperature.
A loud noise from the appliance.	Not enough water in the tank.	Fill the tank.

*Depending on the model

1. Product presentation



EN

Product presentation

1. Iron rest
2. Iron
3. Steam hose
4. Control panel
5. Steam unit
6. Removable water tank
7. Iron soleplate
8. Steam trigger
9. Anti calc light indicator
10. On/Off button
11. Electric cable
12. Anti Calc cork

2. Before first use



Please read the "Safety and use instructions" booklet before first use.

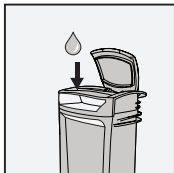
On first use, fumes and odour may come from the appliance. They do not affect the use of the appliance and disappear quickly. Small particles may also come from the iron. These are part of the production process and do not affect yourself or your garments. They disappear quickly.

The appliance must be used and placed on a flat, stable, heat-resistant surface. When you place the appliance on its stand, ensure that the surface on which the stand is placed is stable. Never use the appliance if it is reversed.



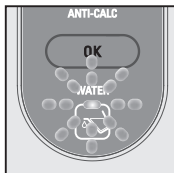
If you use an ironing board, never put your iron on it, always use the iron rest. Never put the steam unit on the board.

3. Product use

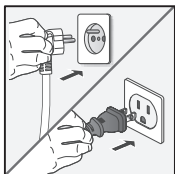


Unplug the appliance.

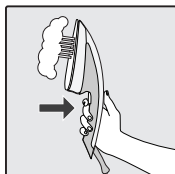
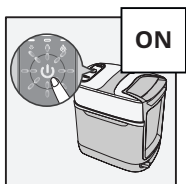
Remove the water tank. Fill it, and then replace it.



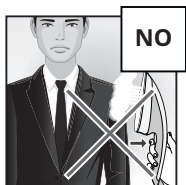
When the water light flashes, please refer to the above instructions, and then, click on the OK button to reboot the light.



EN Put the iron on the iron rest. Plug the appliance and switch it on. Wait until the light stops flashing.

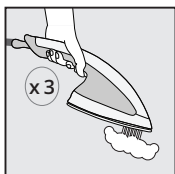


EN Press the trigger in order to get steam.



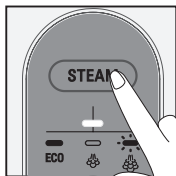
NO **EN** Never iron or steam directly on a garment being worn by someone.

Steam boost



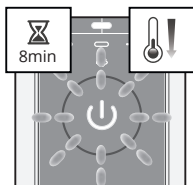
EN Press the steam trigger three times to activate the steam boost.

Mode selection

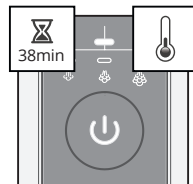


EN To switch between modes, press the STEAM button. The light will be flashing in MAX mode, steady in ECO mode and off in NORMAL mode.

Auto-off

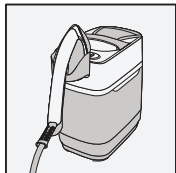


EN After 8 minutes of inactivity, the steam unit will change to stand by mode.

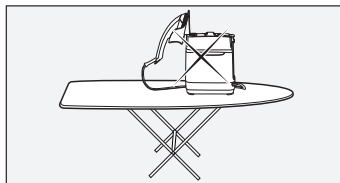
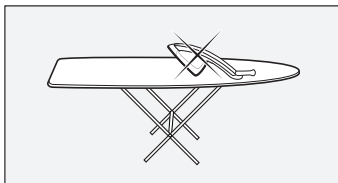


EN After 38 minutes of inactivity, the steam unit will switch off automatically.

4. Iron rest use

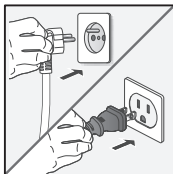


EN Position the iron and its iron rest on the steam unit.



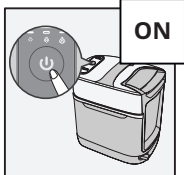
EN

If you use an ironing board, never put your iron on it, always use the iron rest. Never put the steam unit on the board.



EN

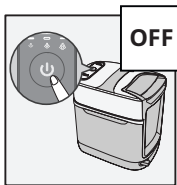
Move around with your appliance. Plug in, switch it on, and wait until it heats up. Always use when steam unit is on the ground, stable.



EN

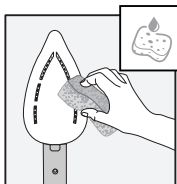
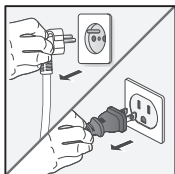
Be careful of heat and steam when using the appliance.

5. Product cleaning



EN

Switch off the appliance. Wait 1 hour to allow it to cool down completely.



EN

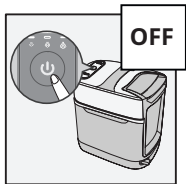
Clean the soleplate with a damp soft cloth or sponge.



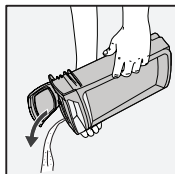
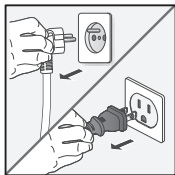
EN

Never use abrasive products or surfaces to clean the soleplate.

6. Product tidying

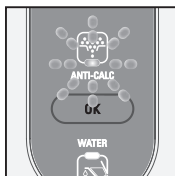


EN Switch off the appliance. Wait 1 hour to allow it to cool down completely.

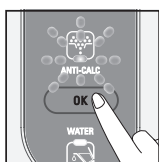
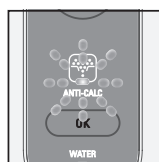
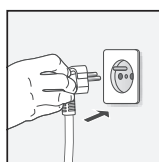
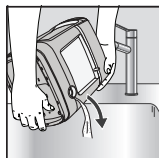
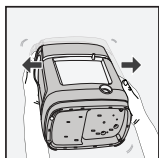
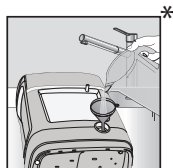
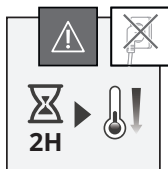
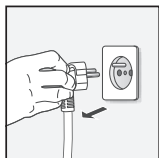


EN Empty the water tank.

7. Anticalc



EN When the appliance needs to be descaled, the anti calc light flashes.



* Not included