



KRUPS

OBLO

USER MANUAL



TABLE OF CONTENTS

SAFETY PRECAUTIONS.	3-4
OVERVIEW	5
PRODUCT RANGE	6-7
FIRST USE.	8
PREPARING A BEVERAGE.	9
RECOMMENDATIONS FOR SAFE USE / ECONOMY MODE . . .	10
CLEANING	11
IF NO LIQUID COMES OUT...	12-13
DESCALING AT LEAST EVERY 3-4 MONTHS.	14-15
TROUBLESHOOTING	16-17

SAFETY PRECAUTIONS



When using electrical appliances, basic safety precautions should always be followed, including the following:

1. Read these instructions for use carefully before using your appliance for the first time and keep them to hand for future reference.
2. Connect the appliance to a mains socket with an earth connection only. Mains voltage must be the same as the details on the rating plate. The use of incorrect connection will negate the guarantee and may be hazardous.
3. This appliance is designed for indoor domestic household use only. It is not intended to be used in following applications, and the guarantee will not apply for:
 - staff kitchen areas in shops, offices and other working environments;
 - farm houses;
 - by clients in hotels, motels and other residential type environments;
 - bed and breakfast type environments.
4. Your appliance is intended for domestic use inside the home only at an altitude below 3400 m.
5. In case of any inappropriate use or failure to comply with the instructions, the manufacturer accepts no responsibility and the guarantee may not apply.
6. We recommend using the NESCAFÉ® Dolce Gusto® capsules designed and tested for the NESCAFÉ® Dolce Gusto® machine. They were designed to interact together - the interaction provides the in-cup quality that NESCAFÉ® Dolce Gusto® is known for. Each capsule is designed to prepare a perfect cup, and cannot be reused.
7. Do not remove hot capsules by hand. Use handles or knobs.
8. Always use the appliance on a flat, stable, heat resistant surface away from sources of heat or water splashes.
9. To protect against fire, electric shock and injury to persons do not immerse the power cord, plugs or the appliance in water or other liquid. Never touch the power cord with wet hands. Do not overfill the water tank.
10. In case of an emergency remove the plug from the power socket immediately.
11. Close supervision is necessary when the appliance is used near children. Keep the appliance / power cord / capsule holder out of reach of children. Children should be supervised to ensure that they do not play with the appliance. Never leave the appliance without surveillance while making a beverage.
12. This appliance is not intended for use by children or persons with reduced physical, sensory or mental capabilities, or lack of experience and knowledge, unless they have been given supervision or instruction concerning use of the appliance by a person responsible for their safety. Persons who have a limited or no understanding of the operation and use of this appliance must first read and fully understand the contents of the user manual, and where appropriate seek additional guidance on its operation and use from the person responsible for their safety.
13. Do not use the appliance without the drip tray and drip grid, except when a very tall mug is used. Do not use the appliance for hot water preparation.
14. For health reasons, always fill the water tank with fresh drinking water.
15. After use of the appliance always remove the capsule and clean the capsule holder. Empty and clean the drip tray and capsule bin daily. Users allergic to dairy products: Rinse the appliance according to the cleaning procedure.
16. Unplug from the mains socket when not in use.
17. Unplug from the mains socket before cleaning. Allow to cool before putting on or taking off parts, before cleaning the appliance. Never clean wet or immerse appliance in any fluid. Never clean the appliance with running water. Never use detergents to clean the appliance. Clean the appliance only using soft sponges/brushes. The water tank should be cleaned with a baby bottle brush.
18. Never turn the machine upside down.
19. If away for prolonged periods, on holiday, etc. the appliance must be emptied, cleaned and unplugged. Rinse before reuse. Operate the rinse cycle before re-using your appliance.
20. Do not turn off the appliance during the descaling process. Rinse the water tank and clean the appliance to avoid any residual descaling agent.



SAFETY PRECAUTIONS

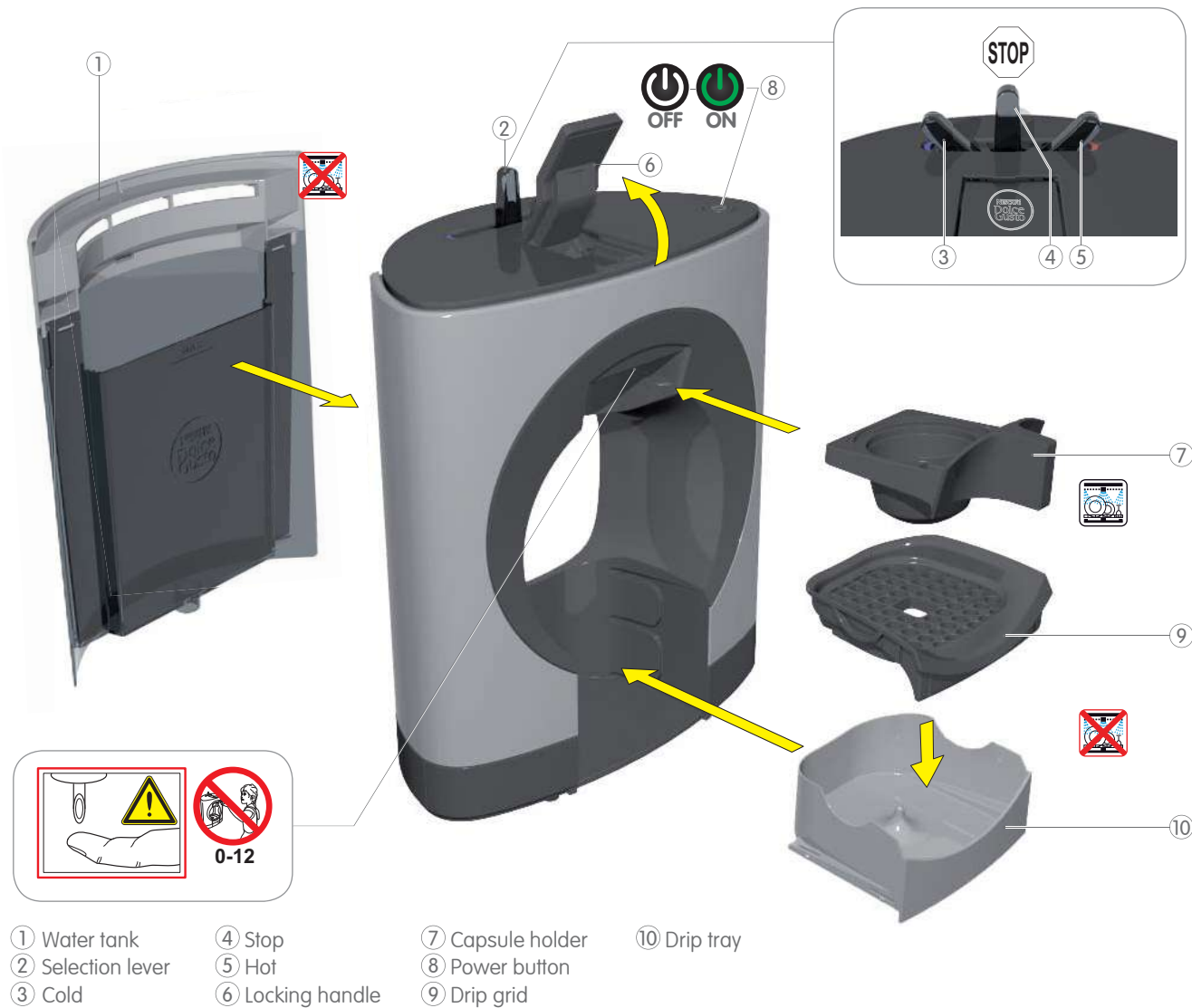
21. Any operation, cleaning and care other than normal use must be undertaken by after-sales service centres designated by NESCAFÉ® Dolce Gusto® Hotline. Do not dismantle the appliance and do not put anything into the openings.
22. In case of intensive use without allowing sufficient cooling time, the appliance will stop functioning temporarily with the red indicator light blinking. This is to protect your appliance from overheating. Switch the appliance off for 20 minutes to let it cool down.
23. Do not operate any appliance with a damaged cord or plug. If the power cord is damaged, it must be replaced by the manufacturer, its service agent or similarly qualified persons in order to avoid a hazard. Do not operate any appliance that malfunctions or has been damaged in any manner. Unplug cord immediately. Return the damaged appliance to the nearest authorised service facility designated by NESCAFÉ® Dolce Gusto® Hotline.
24. The use of accessory attachments not recommended by the appliance manufacturer may result in fire, electric shock or injury to persons.
25. Do not let the cord hang over the edge of a table or counter, or touch hot surfaces or sharp edges. Do not allow the cord to dangle (risk of tripping up). Never touch the cord with wet hands.
26. Do not place on or near a hot gas or electric burner, or in a heated oven.
27. To disconnect, turn the power button OFF, then remove the plug from the wall socket. Do not unplug by pulling the cord.
28. Always close the extraction head with the capsule holder. Do not pull out the capsule holder before the indicator stops blinking. The appliance will not work if the capsule holder is not inserted.
29. Scalding may occur if the lever is opened during the brewing cycles. Do not pull up the lever before the lights on the machine stop flashing.
30. Do not put fingers under the outlet during beverage preparation.
31. Do not touch the needle of the extraction head.
32. Never carry the appliance by the extraction head.
33. The capsule holder is equipped with permanent magnets. Avoid placing the capsule holder near appliances and objects that can be damaged by magnetism, e.g. credit cards, usb drives and other data devices, video tapes, television and computer monitors with picture tubes, mechanical clocks, hearing aids and loud speakers.
34. Patients with pacemakers or defibrillators: Do not hold the capsule holder directly over the pacemaker or defibrillator.
35. If the power socket does not match the plug on the appliance, have the plug replaced with a suitable type by after-sales service centres designated by NESCAFÉ® Dolce Gusto® Hotline.
36. Packaging is made of recyclable materials. Contact your local council / authority for further information on recycling programs. Your appliance contains valuable materials which can be recovered or recycled.
37. For additional guidance on how to use the appliance, refer to the user manual on www.dolce-gusto.com or call NESCAFÉ® Dolce Gusto® hotline number.
38. Please be aware that the appliance is still using electricity whilst in eco-mode (0.4 W/hour).

WARNING: To reduce the risk of fire or electric shock, do not remove the cover. No user serviceable parts inside. Repair should be done by authorised service personnel only!

EUROPEAN MARKETS ONLY:

39. Keep the appliance and its cord out of reach of children aged less than 8 years. Children shall not play with the appliance.
 40. This appliance can be used by children aged from 8 years and above and persons with reduced physical, sensory or mental capabilities or lack of experience and knowledge if they have been given supervision or instruction concerning use of the appliance in a safe way and if they understand the hazards involved. Cleaning and user maintenance shall not be made by children unless they are older than 8 and supervised by an adult.
- This appliance is labeled in accordance with European Directive 2002/96/EC concerning used electrical and electronic appliances equipment – WEEE). The directive determines the framework for the return and recycling of used appliances as applicable throughout the EU.

OVERVIEW



~ UK/CH/DE/AT/FR/ES/PT/IT/NL/LU/BE/GR
 SG/MY
 Canada
 AR/PY/UY

230 V, 50 Hz, max. 1500 W
 230 V, 50 Hz, max. 1500 W
 120 V, 60 Hz, max. 1500 W
 220 V, 50-60 Hz, max. 1340 W

P max. 15 bar

0.8 l

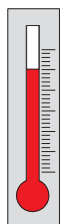
~2.5 kg

5-45 °C
 41-113 °F

A = 24.5 cm
 B = 31.5 cm
 C = 18.0 cm



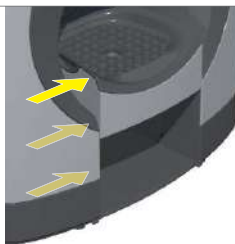
PRODUCT RANGE



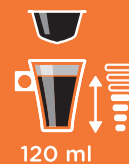
Hot Beverage



ESPRESSO



LUNGO



CAPPUCCINO



CHOCOCINO

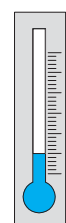


PRODUCT RANGE



LATTE MACCHIATO

CHAI TEA LATTE



Cold Beverage



CAPPUCCINO ICE



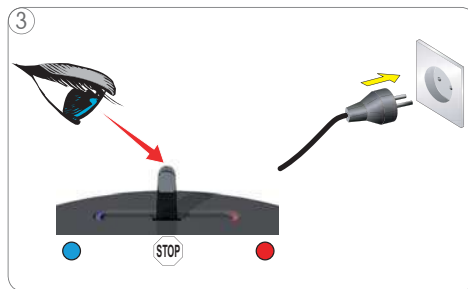
FIRST USE



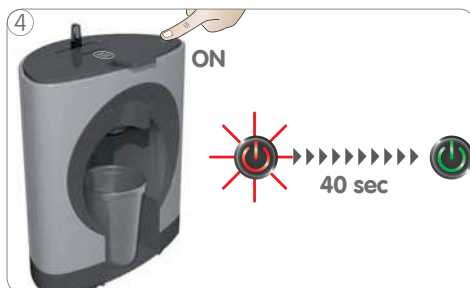
Rinse water tank before first use. Fill water tank with fresh, drinking water. Insert water tank to machine.



Open locking handle and insert empty capsule holder. Close locking handle. Place jug under outlet.



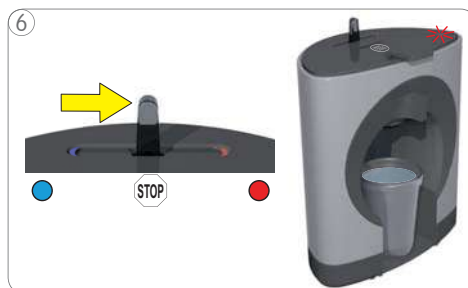
Make sure that the selection lever is in "STOP" position. Then plug the power plug into a mains power socket.



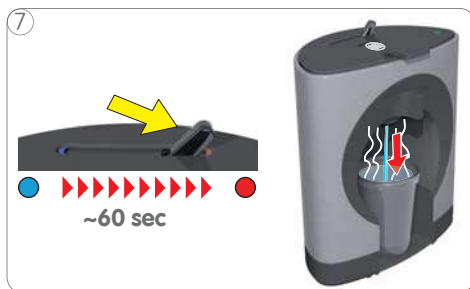
Switch machine on. Power button starts blinking red while machine is heating up for approx. 40 seconds. Afterwards power button lights steady green and machine is ready.



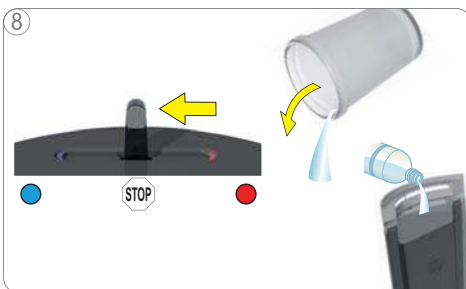
Push selection lever to the "COLD" position. Machine starts rinsing.



After approx. 60 seconds push selection lever to the "STOP" position. Machine stops rinsing and power button blinks red for about 5 seconds.



Push selection lever to the "HOT" position. Machine starts rinsing.

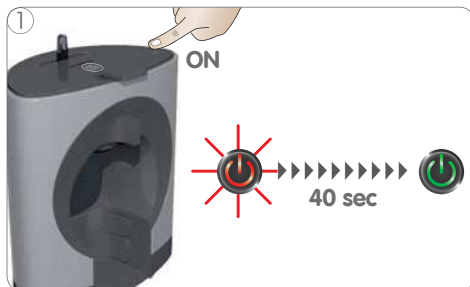


After approx. 60 seconds push selection lever to the "STOP" position. Empty jug and refill water tank with fresh, drinking water.

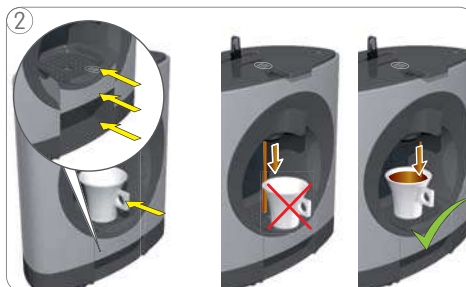


Place drip grid on drip tray. Then insert drip tray at desired position of machine.

PREPARING A BEVERAGE



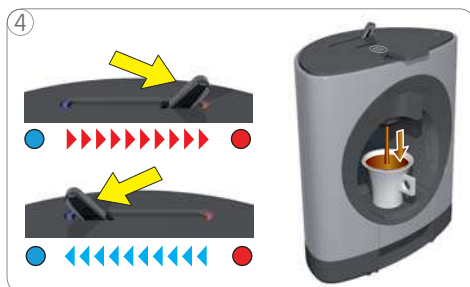
Switch machine on. Power button starts blinking red while machine is heating up for approx. 40 seconds. Afterwards power button lights steady green and machine is ready.



Adjust drip tray position according to the chosen beverage (see page 6-7). Place cup on drip tray.



Open locking handle and pull out capsule holder. Insert capsule in capsule holder and insert it back in machine. Close locking handle.



Push selection lever to the "HOT" or "COLD" position as recommended on capsule packs. Beverage preparation starts.



After reaching the desired level push selection lever to the "STOP" position. Machine stops preparation.



After finishing preparation the power button blinks red for about 5 seconds. **During that time do not open locking handle!**



Take cup from drip tray. Open locking handle.



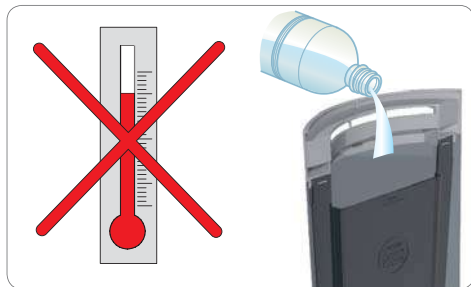
Pull out capsule holder and remove used capsule. Put used capsule in dustbin.



Rinse and dry capsule holder with water from both sides. Insert capsule holder to machine. Enjoy your beverage!



RECOMMENDATIONS FOR SAFE USE



⚠ Never fill hot water into the water tank!



⚠ Never open the locking handle during beverage preparation!



⚠ After finishing preparation the power button blinks red for about 5 seconds. **During that time do not open locking handle!**



⚠ Never push selection lever while locking handle is opened!

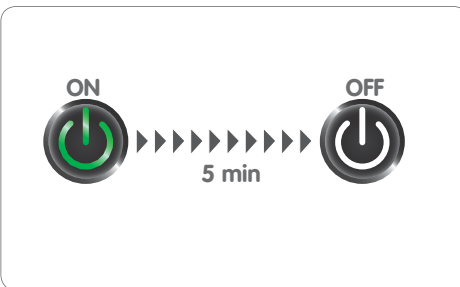


⚠ Do not touch used capsule after beverage preparation! Hot surface, risk of burns!



⚠ Never use a wet sponge. Only use a soft damp cloth to clean the top of the machine.

ECONOMY MODE



After 5 minutes of non-usage the machine automatically shuts down (Economy Mode).

CLEANING



Rinse drip tray with water and clean it with a little washing-up liquid and brush.



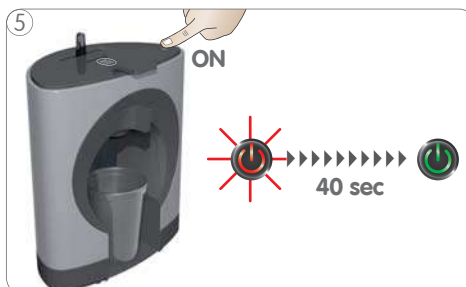
Rinse and dry capsule holder with water from both sides. You can also put it in a dishwasher.



Rinse and clean the water tank. Afterwards refill with fresh, drinking water and insert it into machine. The water tank is not dishwasher proof!



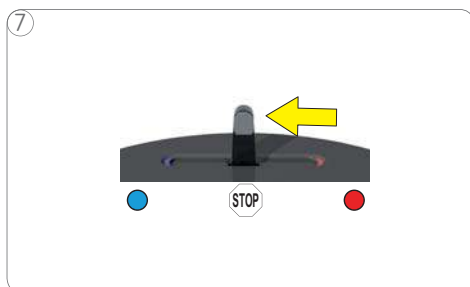
Open locking handle and insert empty capsule holder. Close locking handle and place an empty container underneath the coffee outlet.



Switch machine on. Power button starts blinking red while machine is heating up for approx. 40 seconds. When the power button light is steady green, the machine is ready.



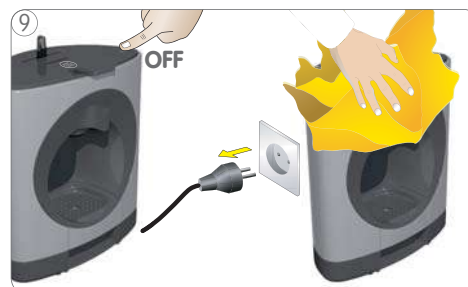
Push selection lever to the "HOT" position. Machine will start rinsing.



After approx. 10 seconds push selection lever to the "STOP" position. Empty and clean the container.



Place drip grid on drip tray. Then insert drip tray at desired position of machine.



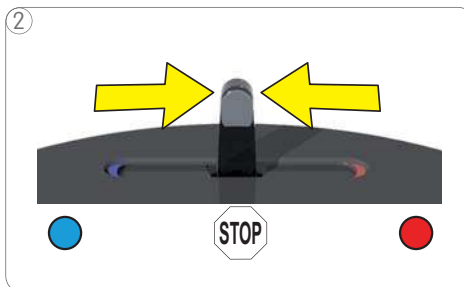
Switch machine off. Unplug power plug. Clean machine with a soft damp cloth. Dry it afterwards with a soft dry cloth.



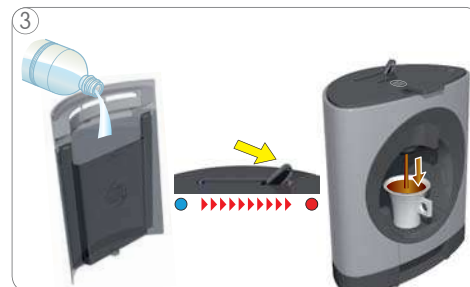
IF NO LIQUID COMES OUT...



No liquid comes out and the machine makes a loud noise.



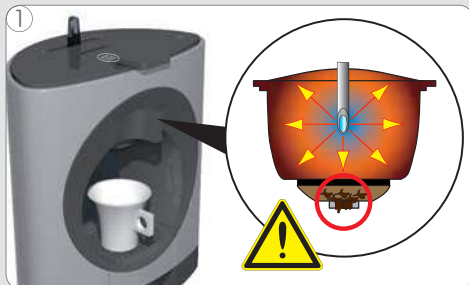
Turn selection lever to middle position.



Check if there is water in the water tank: if not, refill and move lever again to hot/cold position to continue preparation; if yes proceed as follows:

Check if locking handle can be lifted easily: NO - see section **A** (below) / YES – see section **B** (next page)

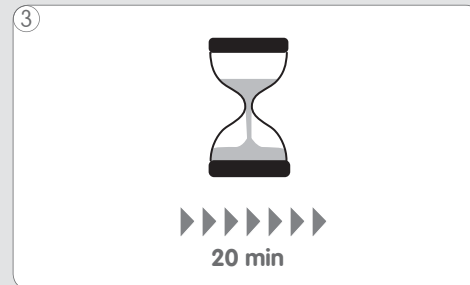
A



The capsule may be blocked and under pressure.



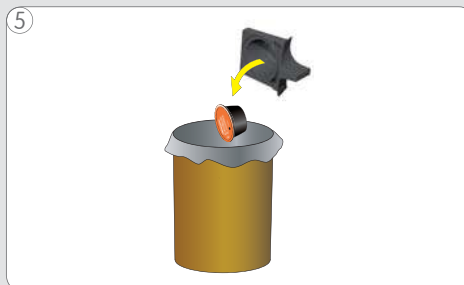
Do not use force to lift the locking handle.



Wait for 20 minutes to reduce the pressure.



Then lift the locking handle and remove the capsule holder.



Throw away the capsule.

IF NO LIQUID COMES OUT...



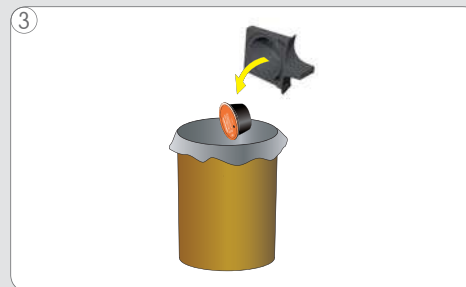
B



The injector may be blocked.



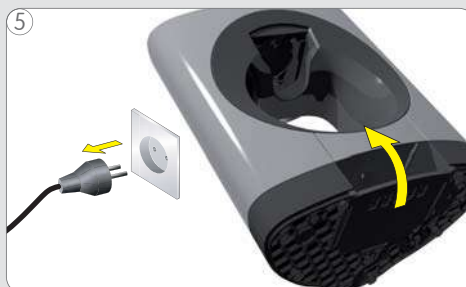
Lift the locking handle and remove the capsule holder.



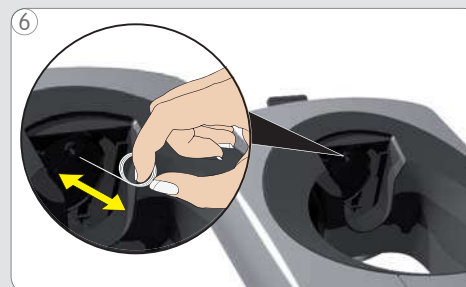
Throw away the capsule.



Remove the water tank and take out the cleaning needle. Close the locking handle. Remove the drip tray.



Unplug machine. For better access to injector tilt machine.



Unblock the injector with the cleaning needle. A descaling of the machine is recommended at this stage.



DESCALING AT LEAST EVERY 3-4 MONTHS



If the beverage comes out slower than usual (even in droplets), or if it is cooler than usual or if the power button light is steady orange, the machine has to be descaled.



Switch machine OFF.



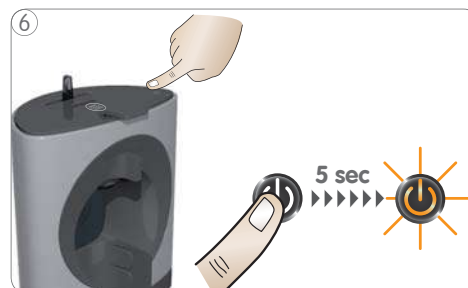
Call NESCAFÉ® Dolce Gusto® Hotline or go on the NESCAFÉ® Dolce Gusto® website. For Hotline numbers see last page.



Mix 0.5 litre fresh, drinking water with descaler sachet in a measuring cup. Pour descaling solution into water tank and insert water tank to machine.



Open locking handle and insert empty capsule holder. Close locking handle and place the empty container under the coffee outlet.



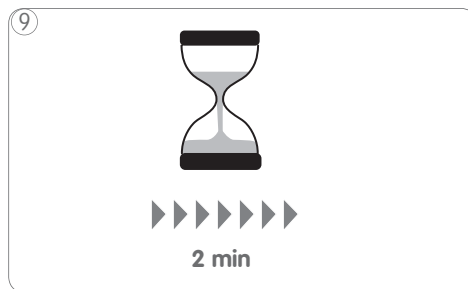
Press and hold power button for at least 5 seconds. Power button starts blinking orange and machine enters the descaling mode.



Push selection lever to the "HOT" position. Machine starts rinsing, power button blinks orange.



After water tank is empty push selection lever to the "STOP" position.



Wait for 2 minutes to let the descaler work.

DESCALING AT LEAST EVERY 3-4 MONTHS



Empty container and water tank. Clean water tank with a brush. Afterwards refill with fresh, drinking water and insert it into machine.



Push selection lever to the "HOT" position. Machine starts rinsing, power button blinks orange.



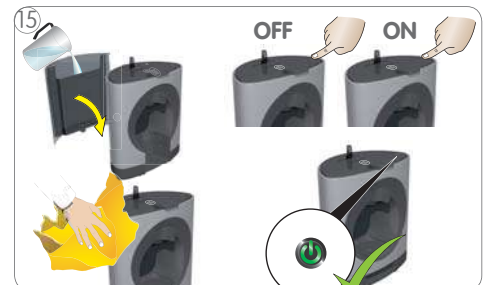
Check visually when water tank is half full. Push selection lever to the "STOP" position.



Push selection lever to the "COLD" position. Machine starts rinsing, power button blinks orange.



Check visually when water tank is empty. Push selection lever to the "STOP" position.



Refill water tank with fresh drinking water and insert it into machine. Clean machine with a soft damp cloth. Dry it afterwards with a soft dry cloth. Switch machine OFF. Afterwards switch machine ON. Power button starts blinking green.

IMPORTANT HINTS



Follow instructions on descaling kit user manual.



Avoid contact of descaling liquid with any part of the machine.



Do not use vinegar for descaling.



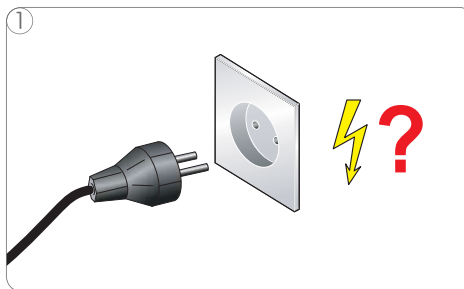
Do not push power button during descaling cycle.



TROUBLESHOOTING



Machine cannot be switched on.



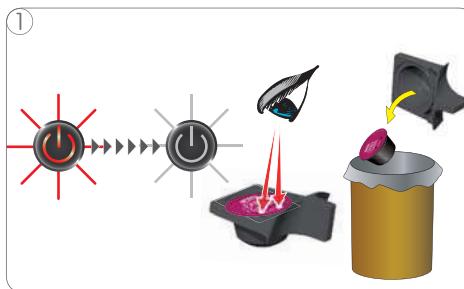
Check if the power plug is plugged correctly into a mains power socket. If yes check your electricity supply.



If machine still cannot be switched on call NESCAFÉ® Dolce Gusto® Hotline. For hotline numbers see last page.



Beverage is splashing out of coffee outlet.



Stop preparation, pull out capsule holder and check capsule. There should be only one hole in the capsule. Throw away capsule with more than one puncture hole.



Insert a new capsule in the capsule holder and insert it back into the machine.



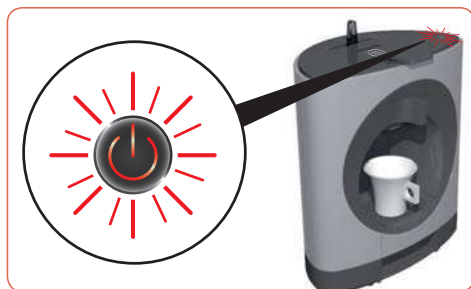
If the beverage comes out slower than usual (even in droplets), or if it is cooler than usual or if the power button light is steady orange, the machine has to be descaled.



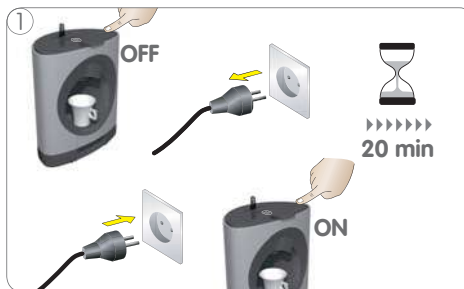
www.dolce-gusto.com

Call NESCAFÉ® Dolce Gusto® Hotline or go on the NESCAFÉ® Dolce Gusto® website. For hotline numbers see last page.

TROUBLESHOOTING



Power button stays red.



Switch machine off. Check if capsule is blocked (see page 12). Unplug power plug and wait 20 minutes. Afterwards plug power plug into mains power socket and switch machine on.



If power button still flashes red call NESCAFÉ® Dolce Gusto® Hotline. For hotline numbers see last page.



KRUPS



HOTLINES

AL 0842 640 10	HK 2179 8888	MK 0800 00 200
AR 0800-999-8100	HR 0800 600 604	MT 80074114
AT 0800 365 23 48	HU 06 40 214 200	MY 1800 88 3633
BE 0800 93217	IE 00800 6378 5385	NL 0800-3652348
BG 0 800 1 6666	IT 800365234	NO 800 80 730
BR 0800 7762233	JP 81-35651-6848	PE 80010210
BS 0800 202 42	(machines)	PL 0800 174 902
CA 1 888 809 9267	81-35651-6847	PT 800 200 153
CH 0800 86 00 85	(capsules)	RO 0 800 8 637 853
CL 800 4000 22	KO 080-234-0070	RU 8-800-700-79-79
CZ 800 135 135	KS 0842 640 10	SE 020-29 93 00
DE 0800 365 23 48	KZ 8-800-080-2880	SG 1 800 836 7009
DK 35460100	LU 8002 3183	SK 0800 135 135
EE 6 177 441	LT 8 700 55 200	SL 080 45 05
ES 900 10 21 21	LV 67508056	SR 0800 000 100
FI 0800 0 6161	ME 020 269 902	UK 0800 707 6066
FIL 898-0061	MEX 5267 3304	UKR 0 800 50 30 10
FR 0 800 97 07 80	01800 365 2348	US 1-800-745-3391
GR 800 11 68068	(Lada sin costo)	



The guarantee does not cover appliances that do not work or do not work properly because they have not been maintained and/or descaled.