

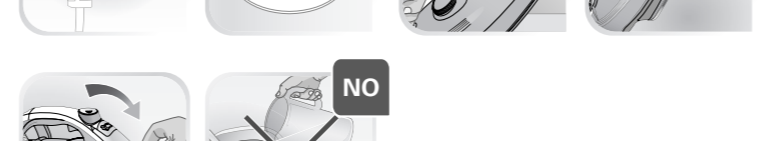
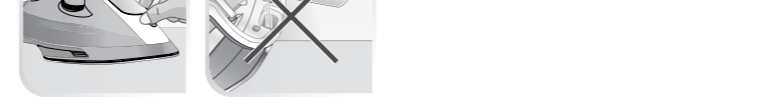


1.  www.tefal.co.uk

2.  www.tefal.co.uk






EXTRA STEAM

**EN: Push and hold






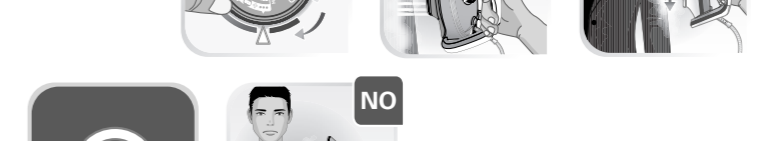
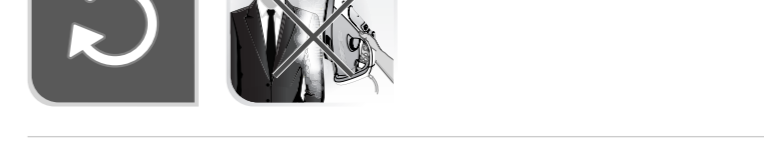

TURBO BOOST






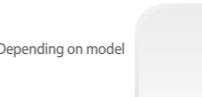




2.  www.tefal.co.uk

SAFETY AUTO-OFF

* EN - Depending on model

8 min. 30 sec.

AUTO-OFF ON








2.  www.tefal.co.uk





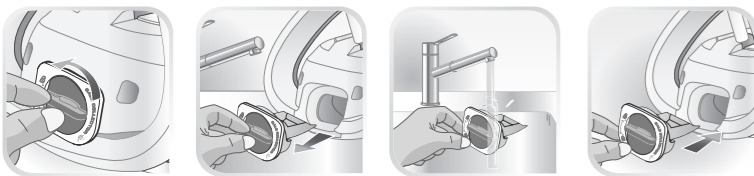
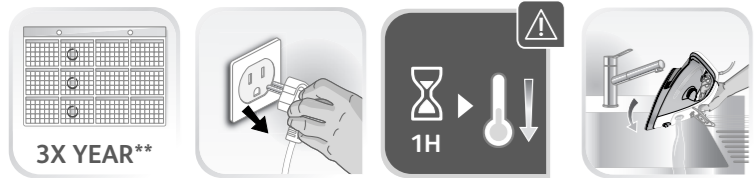
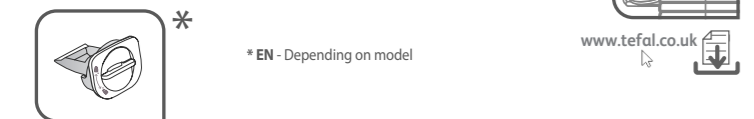


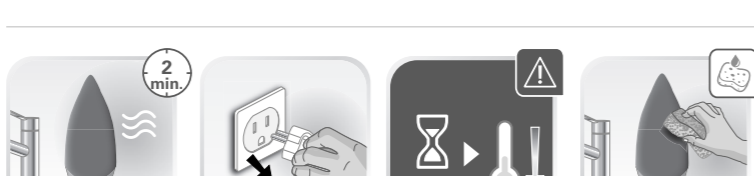
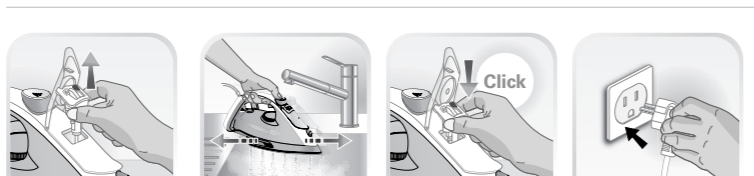
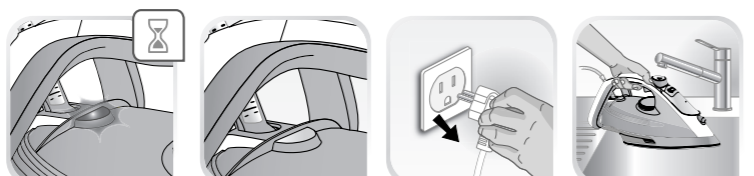




3.



3.



Important safety recommendations

- Please read these instructions carefully before first use. This product has been designed for domestic and indoor use only. Any commercial use, inappropriate use or failure to comply with the instructions, the manufacturer accepts no responsibility and the guarantee will not apply.
- Never unplug the appliance by pulling the power cord. Always unplug your appliance: before filling the water tank or rinsing the water tank, before cleaning the appliance, after each use.
- The appliance must be used and placed on a flat, stable, heat-resistant surface. When you place the iron on the iron rest, make sure that the surface on which you place it is stable.
- This appliance is not intended to be used by persons (including children) with reduced or impaired physical, sensory or mental capacities or persons lacking appropriate knowledge or experience, unless a person responsible for their safety provides either supervision or appropriate instructions concerning use of the appliance prior to its use.
- Children should be supervised to ensure they do not play with the appliance.
- This appliance may be used by children aged 8 or over and persons lacking appropriate knowledge or experience or persons with reduced or impaired physical, sensory or mental capacities provided that they have been thoroughly instructed regarding use of the appliance, are supervised, and understand the risks involved. Children shall not play with the appliance. Cleaning and user maintenance shall not be made by children without supervision. Keep the iron and its cord out of reach of

children less than 8 years of age when it is energized or cooling down.

- The surfaces of your appliance can reach very high temperatures when functioning, which may cause burns. Do not touch the hot surfaces of the appliance (accessible metal parts and plastic parts adjacent to the metallic parts).
- Never leave the appliance unattended when it is connected to the mains. Before storing the appliance, once it is unplugged, please wait until it has cooled down (around 1 hour).
- The appliance must not be used if it has been dropped, if it has any visible damage, if it leaks, or if it functions abnormally in any way. Do not attempt to dismantle your appliance: have it examined at an Approved Service Centre to avoid any danger.
- The iron should only be used with the base provided (for cordless irons).
- Check the electrical power for sign of wear or damage prior to use. If the electrical power cord is damaged, it must be replaced at an Approved Service Centre to avoid any danger.

- The iron must always be placed on its base and never on its heel (for cordless irons).
- Your iron and its base must be used and placed on a stable surface. When you place the iron on its base, ensure that the surface on which the base is placed is stable.
- For your safety, this appliance conforms to all applicable regulations (Low Voltage Directive, Electromagnetic Compatibility, Environment, etc).
- Your steam iron is an electrical appliance: it must be used under normal conditions of use. It is designed for domestic use only.
- Always plug your steam iron:
 - into a mains circuit with voltage between 220 V and 240 V,
 - into an earthed electrical socket.
 Connecting to the wrong voltage may cause irreparable damage to the appliance and will invalidate your guarantee. If you are using a mains extension lead, ensure that it is correctly rated (16A) with an earth, and is fully extended.
- Completely unwind the power cord before plugging into an earthed socket.
- The soleplate of your iron can reach extremely high temperatures, and can cause burns: do not touch them. Never touch the electrical power cords with the soleplate of the iron.
- Your appliance emits steam, which can cause burns. Always handle the iron with care, especially when ironing vertically. Never direct the steam towards people or animals.
- Never immerse your steam iron in water or any other liquid. Never place it under a running tap.
- The plug must be removed from the socket-outlet before the water reservoir is filled with water.

Before first use
When you first use the iron, some smoke or a harmless odour may be produced or there may be a small discharge of particles. This will not affect the use of the iron and will disappear quickly.

What water to use?
Your iron has been designed to use tap water. However, the self-clean function must be performed regularly on the steam chamber to remove limescale. If your water is very hard, mix 50% tap water and 50% bottled demineralised water. Never use water containing additives (starch, perfume, aromatic substances, softeners, etc.), or condensation water (for example water from tumble dryers, water from refrigerators, water from air conditioning units, rainwater). This water contains organic waste materials or minerals that concentrate under the effect of heat and cause spitting, brown colouring or premature ageing of your appliance.

PLEASE RETAIN THIS INSTRUCTION BOOKLET FOR FUTURE REFERENCE

Environment
Environment protection first!
Leave it at a local civic waste collection point.
Your appliance contains valuable materials which can be recovered or recycled.

Problems with your iron?

PROBLEMS	POSSIBLE CAUSES	SOLUTIONS
Water is leaking from the holes in the soleplate.	You are using the steam when the iron is not hot enough.	Wait for the indicator light to turn off.
	You are using the turbo steam button (turbo steam) too often.	Wait a few seconds between each use.
	You have stored the iron horizontally without emptying the water tank or setting the steam control to 0.	See the chapter on "Storing your iron".
The iron leaks at the start of ironing.	You have removed the anti-scale rod to fill your iron.	Do not remove the anti-scale rod to fill the reservoir.
	The steam control is not set on 0 when you fill the water reservoir.	Ensure that the steam control is set on 0 when you fill the water reservoir.
Drips from the soleplate are staining clothing	You are using chemical descaling agents.	Do not introduce a descaling agent into the water tank.
	You are not using the right type of water.	Clean the steam chamber and see the chapter on "Which water should I use?"
	Clothing fibres are building up in the holes of the soleplate and burning.	Clean the steam chamber and the soleplate with a damp sponge. Periodically vacuum the holes the holes in the soleplate. Please refer to the "Cleaning the Iron" paragraph.
The soleplate is dirty or brown and may stain clothing.	You are using starch.	Clean the soleplate as indicated above. Spray the starch on the reverse side of the clothing to be ironed.
	Your laundry has not been rinsed sufficiently or you are ironing a new item of clothing before washing it.	Ensure that your laundry is sufficiently rinsed to eliminate potential soap deposits or chemical products on new items of clothing.
	You are not using the right type of water.	Refer to "Which water should I use?"
Your iron produces little to no steam.	The water tank is empty.	Fill it up.
	The anti-scale rod is dirty.	Clean the anti-scale rod. Please refer to the "Cleaning the Anti-Scale Rod" paragraph.
	Your iron is clogged up with limescale.	Clean the anti-scale rod and / or clean the calc collector. Please refer to the "Cleaning the Anti-Scale Rod", "Cleaning the calc collector" and "Cleaning the Iron" paragraphs.
	Your iron has been used for too long in the dry ironing function.	Cleaning the iron. Refer to "Descaling the steam chamber" section.
The soleplate is scratched or damaged.	You have placed your iron on a metallic iron rest or ironed over metal zips or fasteners.	Always place your iron on its heel rest when not in use. Do not iron over metal zips or fasteners.
The iron steams once the water tank has been filled.	The steam control is not set to 0.	Ensure that the steam control is set to 0.
	The water tank is too full.	Do not exceed the max level for filling.
The spray function does not spray any water.	The water tank is not full enough.	Add water to the water tank until max level.

Tefal
ULTRAGLIDE PLUS
ULTRAGLIDE ANTI-CALC PLUS

