



Pro Express Protect - GV92

EN


Summary

1. Safety instructions	4
2. USING YOUR APPLIANCE	11
2.1 Getting started	11
2.2 Filling the water tank	14
2.3 Transportation.....	16
2.4 Settings	17
2.5 Vertical steaming	20
2.6 Auto-off	21
3. MAINTENANCE AND STORAGE.....	22
3.1 Emptying the scale collector.....	22
3.2 Rinsing the boiler	24
3.3 Cleaning	26
3.4 Storage	27
4. TROUBLESHOOTING.....	28

Important recommendations

- Please read these instructions carefully before first use. This product has been designed for domestic and indoor use only. Any commercial use, inappropriate use or failure to comply with the instructions, the manufacturer accepts no responsibility and the guarantee will not apply.
- Never unplug the appliance by pulling the power cord. Always unplug your appliance:
 - before filling the water tank or rinsing the boiler,
 - before cleaning the appliance,
 - after each use.
- The appliance will not work without the limescale collector (depending on model).
- The appliance must be used and placed on a flat, stable, heat and water resistant surface. When you place the iron on the iron rest, make sure that the surface on which you place it is stable.
- Children should be supervised to ensure they do not play with the appliance.
- This appliance may be used by children aged 8 or over and persons lacking appropriate knowledge or experience or persons with reduced or impaired physical, sensory or mental capabilities provided that they have been thoroughly instructed regarding use of the appliance, are supervised, and understand the risks involved. Children shall not play with the appliance. Cleaning and user maintenance shall not be made by children without

supervision. Keep the iron and its cord out of reach of children less than 8 years of age when it is energized or cooling down.

-  The surfaces which are marked with this sign, the soleplate and steam cord are very hot during the use of the appliance. Do not touch these surfaces before the appliance has completely cooled down.
- Never leave the appliance unattended when it is connected to the mains. Before storing the appliance, once it is unplugged, please wait until it has cooled down (around 1 hour).
- Do not use any descaling products (vinegar, industrial descaling products, etc.) to rinse the boiler: they may damage the appliance.
- Before rinsing the boiler/rinsing the Anti scale collector (depending on model), always make sure that the appliance is completely cooled down and has been unplugged for at least 2 hours before unscrewing the boiler rinse cap/or anti scale collector.
- Warning: if the boiler cap or the boiler rinse cap (depending on the model), is dropped or severely knocked, have it replaced by an Approved Service Centre, as it may be damaged.
- Never fill the appliance directly from the tap.
- The filling, or descaling, or rinsing, or inspection apertures that are under pressure, must not be opened during use.
- The appliance must not be used if it has been dropped, if it has any visible damage, if it leaks, or if it functions abnormally in any way. Do not attempt to dismantle your appliance: have it examined at an Approved Service Centre to avoid any danger.

- Check the electrical power cord and steam cords for signs of wear or damage prior to use. If the electrical power cord or the steam cord is damaged, it must be replaced by an Approved Service Center to avoid any danger.

- Accessories, consumables and end user replaceable parts must be only purchased from an Approved Service Centre.
- For your safety, this appliance conforms to all applicable regulations (Low Voltage Directive, Electromagnetic Compatibility, Environment, etc).
- Your steam generator iron is an electrical appliance: it must be used under normal conditions of use. It is designed for domestic use only.
- It is equipped with 2 safety systems:
 - a pressure release valve designed to avoid excessive pressure. In the event of malfunction, the valve releases excess steam.
 - a thermal fuse to avoid overheating.
- Always plug your steam generator iron:
 - into a mains circuit with voltage between 220 V and 240 V (Alternating current only),
 - a socket outlet with an earth connection.Connecting to the wrong voltage may cause irreparable damage to the appliance and will invalidate your guarantee.
- Do not use an extension lead. If you accept liability for doing so, only use an extension lead which is in good condition, has a plug with an earth connection and is suited to the power rating of the appliance.
- Completely unwind the power cord before plugging into an earthed socket outlet.
- The soleplate of your iron, the steam cord, and the iron rest on the base unit can reach extremely high temperatures, and can cause burns: do not touch them. Never touch the electrical power cords with the sole plate of the iron.
- Always use a vented/mesh ironing board to prevent water spots on clothes and to avoid hot steam venting sideways.

- Your appliance emits steam, which can cause burns. Always handle the iron with care, especially when ironing vertically.
Never direct the steam towards people or animals. Never iron clothing on a person, always use a hanger. Never iron in a seated position with your legs under the iron board.
- Never immerse your steam generator iron in water or any other liquid. Never place it under a running tap.

What water to use?

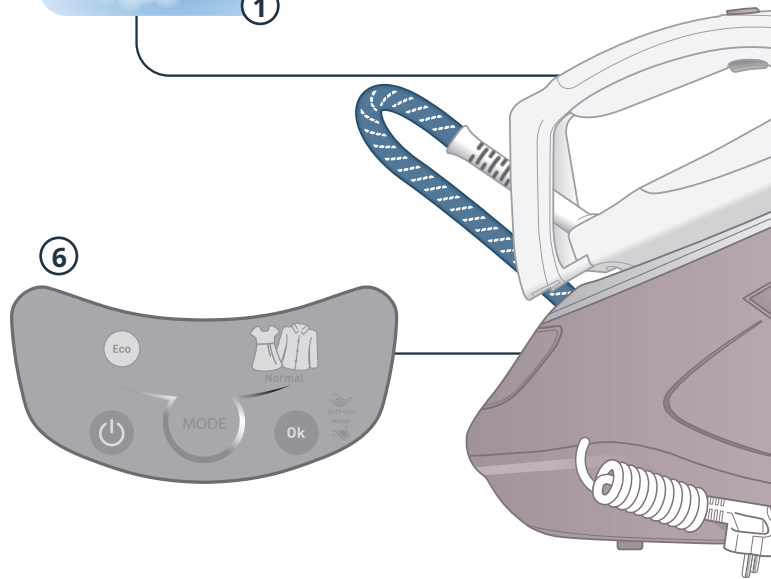
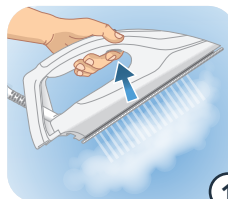
- Your appliance has been designed to function using untreated tap water. If your water is very hard, we recommend you use a mix of 50% untreated tap water and 50% distilled water available in hardware stores.
- Types of water not to use:
Heat concentrates the elements contained in water during evaporation. The types of water listed below may contain organic waste, mineral or chemical elements that can cause spitting, brown staining or premature wear of the appliance: water from clothes dryers, scented or softened water, water from refrigerators, batteries, air conditioners, rain water, boiled, filtered or bottled water. These types of water should not be used in your TEFAL iron. Also only use distilled water as advised above.
Always remember:
Never use rainwater or water containing additives (like starch, fragrance or water from domestic appliances).
- Such additives can affect the steam properties and at high temperature, form deposits in the steam generator chamber
- which are likely to stain your washing and lead to premature aging of the appliance.

PLEASE RETAIN THIS INSTRUCTION BOOKLET FOR FUTURE REFERENCE

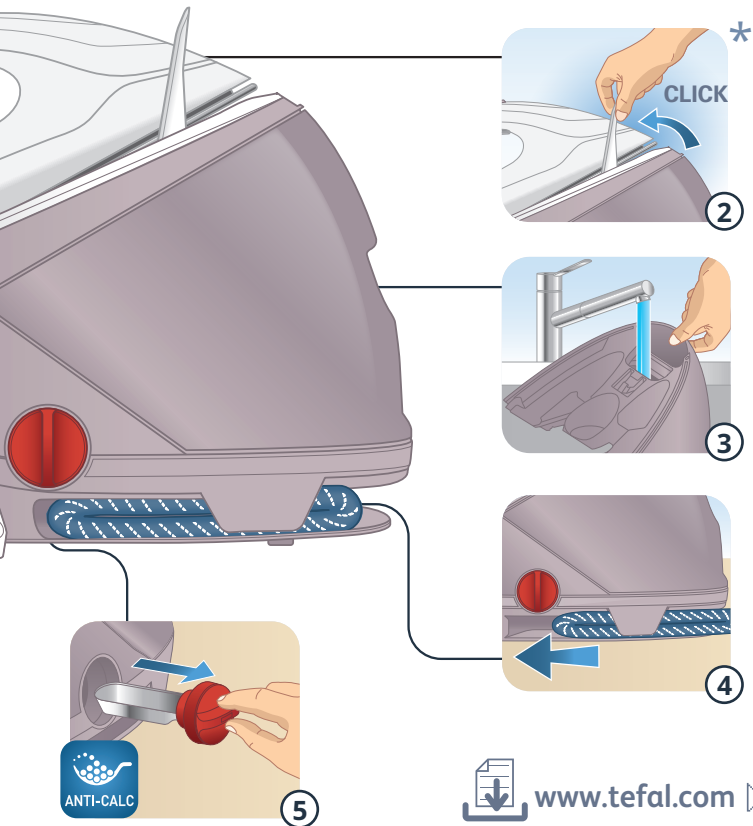


Environment protection first !

- ① Your appliance contains valuable materials which can be recovered or recycled.
- ➔ Leave it at a local civic waste collection point.



- 1 Steam trigger
- 2 Lock system
- 3 Water tank
- 4 Steam cord storage
- 5 Scale collector
- 6 Control panel



 www.tefal.com

USING YOUR APPLIANCE



2.1 Getting started

Pro Express Protect is equipped with a lock system to hold the iron onto the base for easy transport and storage.

- Unlock your steam generator.
- Completely unwind the power cord and take the steam cord out of its storage space.
- Always ensure that the base unit is positioned close enough to the ironing surface to avoid straining and wear of the steam cord.
- Fill the watertank with tap water up to the max indication. Put the tank back into the appliance by pushing in until it locks into place.
- Plug in your steam generator.

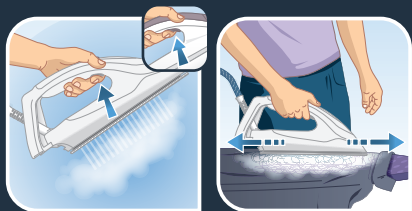
USING YOUR APPLIANCE



- Press the «ON-OFF» button on the control panel.
- The «ON-OFF» and the «Normal» button light remain flashing while the appliance is warming up.



- The steam generator is ready for use. The mode can still be switched even when the light flashes. After around 2 minutes, the light of the selected setting ECO / NORMAL remains lit.



- To obtain steam, press the steam trigger under the iron handle. The steam will stop when you release the button.

USING YOUR APPLIANCE



- To obtain even more steam, press the steam trigger under the handle three times in quick succession for automatic sequential steam.

During ironing, you can place the iron on the soleplate, the heel or on the base of the generator.

WARNING: Remember that the soleplate remains very hot and can burn.

USING YOUR APPLIANCE



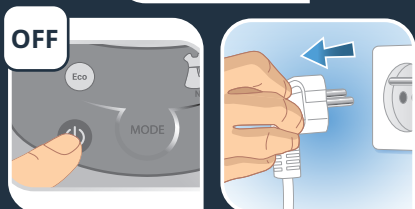
2.2 Filling the water tank

- Fill in the water tank before every use or when the « water tank empty » light flashes.

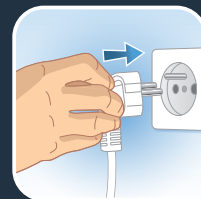
- Switch off and unplug the appliance.

- Remove the removable water tank using the handle located at the front of the steam generator

- Fill it with tap water without exceeding the MAX level.
- Push it back into its housing until you hear a «click».



USING YOUR APPLIANCE

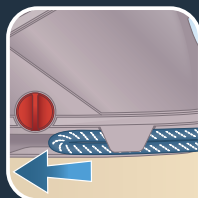


- Plug in the appliance.
- Press the «ON-OFF» button to restart the appliance.



- Red «water tank empty» light flashes on control panel.
- Hold down the «OK» button for a few seconds to turn off the red light.

USING YOUR APPLIANCE



2.3 Transportation

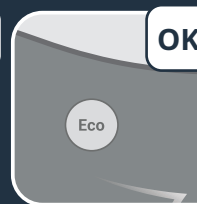
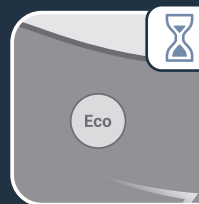
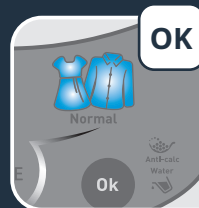
Your steam generator is equipped with a lock system to hold the iron onto the base for easy transport and storage

To transport your steam generator using the handle of the iron:

- Put the iron on the steam generator iron rest and raise the lock system over the iron until it locks into place (audible click).
- Hold the iron by the handle to transport your steam generator.

*Depending on model

USING YOUR APPLIANCE



2.4 Settings

Changing modes

- Press the « MODE » button located on the control panel to go from one setting to another.
- When you press the MODE button to change mode, the light of the new mode flashes while the steam generator is adapting temperature and steam to the new setting. The steam generator is ready when the light stops flashing.

USING YOUR APPLIANCE

Ironable textiles

All textiles that contain the ironing symbol with one to three dots on the care label can be ironed, such as linen, cotton, polyester, silk, wool and viscose.

Do not iron printed garments, even if the garment is ironable.

USING YOUR APPLIANCE



Boost mode

- To activate the "Boost" function, just press the trigger of the iron 3 times.

USING YOUR APPLIANCE

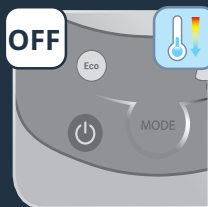


2.5 Vertical steaming

As steam is very hot: never attempt to remove creases from a garment while it is being worn, always hang garments on a coat hanger.

- Hang the garment on a coat hanger and hold the fabric slightly taut with one hand.
- Holding the iron in a vertical position tilted slightly forwards, press repeatedly on the steam control button (underneath the iron handle) moving the iron from top to bottom.

USING YOUR APPLIANCE



2.6 Auto-off

- The steam generator is fitted with an «AUTO-OFF» monitoring system, which is activated automatically after approximately 8 minutes without use. All the lights on the appliance turn off.
- To reactivate the steam generator, press the «ON-OFF» button.

MAINTENANCE AND STORAGE

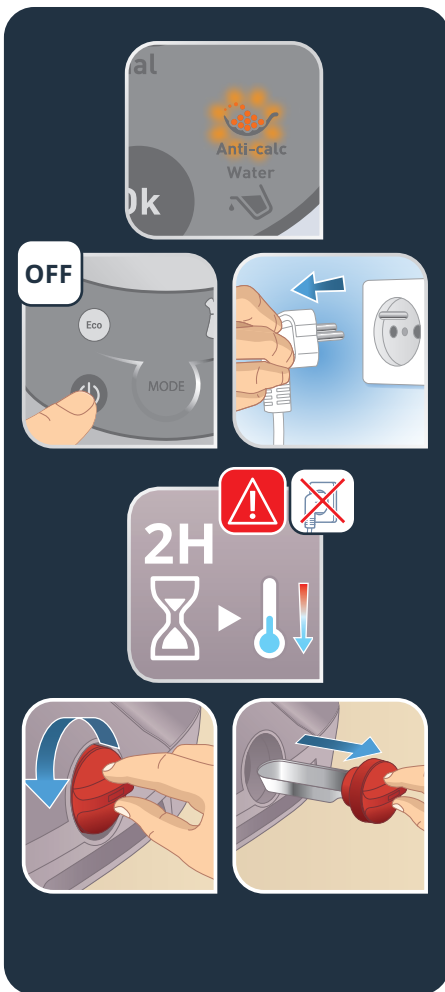
3.1 Emptying the scale collector

- An orange «anti-calc» light located on the control panel starts flashing to inform that the scale collector needs rinsing.
- Switch off and unplug the appliance.

Appliance has to be unplugged for at least 2 hours and be completely cool before being carried out.

- Fully unscrew the collector and pull it out of the base unit.

During this operation, water can drip from the scale collector opening.

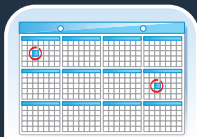


MAINTENANCE AND STORAGE



- To clean the collector, rinse it under running water to remove any scale it contains.
- Place the collector in its housing by screwing it in completely to ensure it is watertight.
- Plug in the appliance.
- Press «ON-OFF» button to restart appliance.
- Orange «Anti-Calc» light flashes on control panel
- Hold down the «OK» button for a few seconds to turn off the orange light

MAINTENANCE AND STORAGE



2 X YEAR

OFF



2H



3.2 Rinsing the boiler

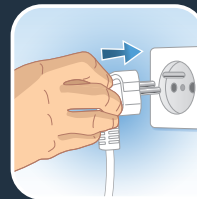
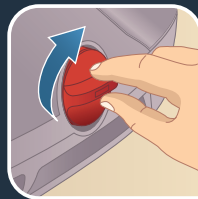
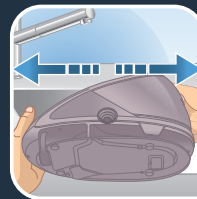
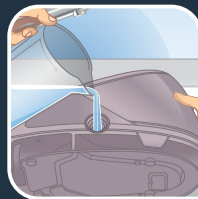
- In addition to this regular maintenance, it is advisable to rinse the boiler tank out completely every 6 months or after approximately 25 uses, whichever is the sooner.
- Switch off and unplug the appliance.

Appliance has to be unplugged for at least 2 hours and be completely cool before being carried out.

- Fully unscrew the collector and pull it out of the base unit.

During this operation, water can drip from the scale collector opening.

MAINTENANCE AND STORAGE

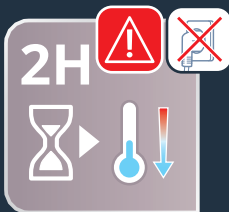


ON



- Place the steam generator on the edge of your sink and hold your steam generator in an inclined position. Use a jug to fill the boiler tank with 1/4 litre of untreated tap water.
- Shake the base unit gently for a few seconds and then empty it completely into the sink.
- Place the collector in its housing by screwing it in completely to ensure it is watertight.
- Plug in the appliance.
- Press «ON-OFF» button to restart the appliance.
- Press the «OK» button if the anti calc light flashes.

MAINTENANCE AND STORAGE



3.3 Cleaning

Appliance has to be unplugged for at least 2 hours and be completely cool before being carried out.

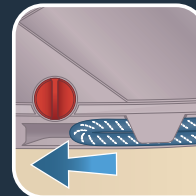
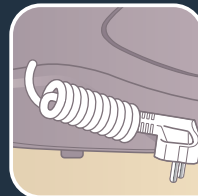
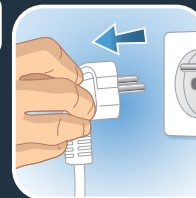
- Clean soleplate with a soft damp cloth.

Do not use detergent or descaling products for cleaning the soleplate.

- Clean the plastic parts of the appliance occasionally with a soft cloth.

Never hold the iron or the base unit under the tap.

MAINTENANCE AND STORAGE



3.4 Storage

- Switch off and unplug the appliance.
- Store the power cord in its slide storage place.
- Store the steam cord in its slide storage place without stretching it too much.
- Put the iron on the steam generator iron rest and raise the retaining hoop over the iron until it locks into place (audible click).
- Leave the steam generator to cool (around 1h) then empty the watertank before putting it away if you are storing it in a cupboard or a confined space.

If you store your steam generator in a relatively cold place (approximately <10 °C), put it in a warm place before starting your ironing.

TROUBLESHOOTING

Problem	Possible Causes	Solutions
Water is dripping from the holes in the soleplate	The water has condensed in the tubes because you are using the steamer for the first time or have not used it for a while.	Press the steam button away from your ironing board until the iron emits steam.
	The soleplate is not hot enough to produce steam.	Set the iron to the steam zone* (see user manual).
Traces of water appear on the laundry	Your ironing board cover is saturated with water as it is not suitable for the power of a steam generator.	Ensure you use a suitable ironing board (a mesh ironing board which prevents condensation).
White streaks are dripping from the holes in the soleplate	Your boiler is emitting limescale as it is not rinsed regularly.	Rinse the boiler as instructed in the user manual.

Problem	Possible Causes	Solutions
Brown streaks are dripping from the holes in the soleplate and staining the laundry	You are using chemical descaling agents or additives in the water.	Never add any product to the boiler (see the section "What water should I use?")
The soleplate is dirty or brown and may mark the laundry	The iron is being used on too high a temperature.	Clean the soleplate as instructed in the user manual. Use a lower temperature.
The soleplate is scratched or damaged	You have placed your iron flat down on the metal iron rest.	Always place your iron on its heel or on the steam generator base.
The red "WATER" indicator light is flashing*	You have not pressed the "OK" button.	Press the "OK" button located on the control panel until the indicator light goes off.
The steam generator iron will not turn on or the iron indicator light and the "ON-OFF" indicator light will not turn on.*	The "auto-off" system is activated after 30 minutes of non-use and has turned off your steam generator iron.	Press the "ON-OFF" restart button located on the control panel.

Problem	Possible Causes	Solutions
The red "WATER" indicator light is flashing and the "ON-OFF" button is not working.*	The appliance has been stored in a cold area (around $<10\text{C}^{\circ}$)	Unplug the appliance. Leave the appliance for 3 hours until it reaches ambient temperature.

* Depending on the model

If you cannot determine the cause of the problem, consult an approved after sales care service.

1820018614