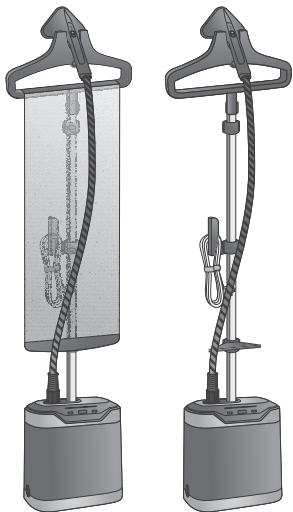


Tefal[®] EN



IT84XX

www.tefal.com

IMPORTANT SAFETY INSTRUCTIONS

- When using your appliance, basic precautions should always be followed, including the following:
- Read all instructions before using this appliance.
- This appliance has been designed for indoor, domestic use only. Any commercial use, inappropriate use or failure to comply with the instructions, the manufacturer accepts no responsibility and the guarantee will not apply.
- Always plug your appliance:
 - into a mains circuit with voltage between 220 V and 240 V.

- into an earthed electrical socket.

Connecting to the wrong voltage may cause irreparable damage to the appliance and will invalidate your guarantee.

Do not use an extension lead. If you accept liability for doing so, only use an extension lead which is in good condition, has a plug with an earth connection and is suited to the power rating of the appliance.

- Completely unwind the power cord before plugging into an earthed socket.
- Use appliance for its intended use only.
- To reduce the risk of contact with hot water emitting from steam vents, check appliance before each use by holding it away from body and operating steam button.

- This appliance can be used by children aged from 8 years and above and persons with reduced physical, sensory or mental capabilities or lack of experience and knowledge if they have been given supervision or instruction concerning use of the appliance in a safe way and understand the hazards involved. Children shall not play with the appliance. Cleaning and user maintenance shall not be made by children without supervision.
- Never unplug the appliance by pulling on the power cord; instead, grasp plug and pull away from the socket to unplug the appliance.
- Do not allow the power cord to touch hot surfaces or come into contact with rough or sharp edges. Let the appliance cool completely down before putting away. Loop cord loosely around appliance when storing.
- Before filling or emptying the water tank, cleaning, or removing or refitting accessories, ensure that the appliance is unplugged and completely cool.
- Care should be taken when using the appliance due to the emission of steam.
- The appliance must not be used if it has been dropped, if it has any visible damage, if it leaks, or if it functions abnormally in any way. Do not attempt to dismantle your appliance: have it examined at an Approved Service Centre to avoid any danger.
- Close supervision is necessary for any appliance being used by or near children.

- Never leave the appliance unattended when it is connected to the mains. Before storing the appliance, once it is unplugged, please wait until it has cooled down (around 1 hour).
- Burns could occur from touching hot metal or plastic parts, hot water or steam. Use care when you empty a steam appliance. There may be hot water in the reservoir.
- Do not use an extension lead. If you accept liability for doing so, only use an extension lead which is in good condition, has a plug with an earth connection and is suited to the power rating of the appliance.
- Never immerse your appliance in water or any other liquid. Never place it under a running tap.
- Do not direct steam at people, animals or clothes while they are being worn.
- This appliance is not intended for use by persons (including children) with reduced physical, sensory or mental capabilities, or lack of experience and knowledge, unless they have been given supervision or instruction concerning use of the appliance by a person responsible for their safety. Children should be supervised to ensure that they do not play with the appliance.
- The use of accessory attachments other than those provided by the manufacturer is not recommended and may result in fire, electric shock or personal injury.

- The appliance must be used and placed on a flat, stable, heat-resistant surface. When you place the appliance on its stand, ensure that the surface on which the stand is placed is stable.
- The appliance must not be used if it has been dropped, if there are visible signs of damage or if it is leaking.
- Check the electrical power cord and steam cords for signs of wear or damage prior to use. If the electrical power cord or the steam cord is damaged, it must be replaced by an Approved Service Centre to avoid any danger.
- Do not use other descaling products than the one cited in the IFU.
- Do not obstruct the appliance airways.

Before first use

- When you first use the appliance, some smoke or a harmless odour may be produced or there may be a small discharge of particles. This will not affect the use of the appliance and will disappear quickly.

What water to use?

- Your appliance has been designed to use untreated tap water.

Do not use pure demineralised or pure distilled water, water from clothes dryers, scented or softened water, rain water, filtered, bottled or boiled water, water from refrigerators, batteries or air conditioners as these may damage the appliance. These types of water contain organic waste, mineral elements that become concentrated when heated and cause spitting, brown staining, leaking or premature wear on your appliance. If your water is very hard, mix 50% untreated tap water with 50% distilled water (available in hardware stores).

SAVE THESE INSTRUCTIONS

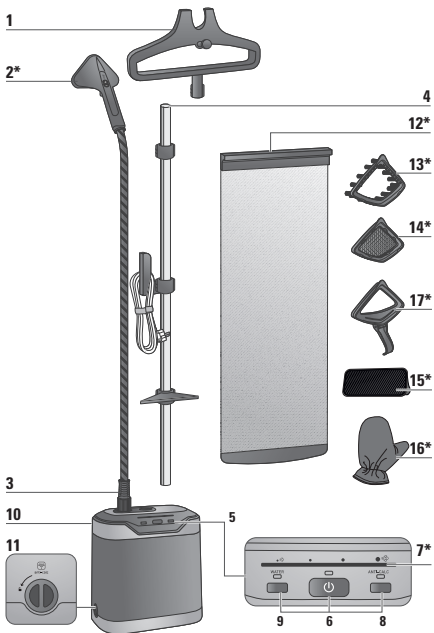
TROUBLESHOOTING

Problems	Possible causes	Solutions
There is no steam.	The appliance has not been turned on.	Check that the appliance has been plugged in correctly. Next press the On/Off pedal, the power indicator light located at the front of the appliance will come on.
	The hose has been obstructed.	Check that the hose is not bent or twisted.
	There is no water left in the water tank.	Unplug the appliance and fill the water tank.
	The steam is not ready yet.	The appliance will produce steam about 45 seconds after it has been switched on.
The steam flow is low.	Your steamer has a build-up of scale because it has not been rinsed out regularly.	See descaling process (Descaling procedure paragraph).
	The hose has been obstructed.	Check that the hose is not bent or twisted. Always extend fully the pole.
	There is no water left in the water tank.	Unplug the appliance and fill the water tank.
Water runs through the holes of the steam head.	There is condensation in the hose.	Never use a steamer in the horizontal position. Hold the hose vertically outstretched and wait for the condensed water to return to the steamer. Always extend fully the pole.
The steamer takes a long time to heat and/or ejects white particles.	Your steamer has a build-up of scale because it has not been descaled regularly.	See descaling process (Descaling procedure paragraph).

ENVIRONMENTAL PROTECTION FIRST !



- ① Your appliance contains valuable materials which can be recovered or recycled.
- ➡ Leave it at a local civic waste collection point.



* EN Depending on model

PRODUCT DESCRIPTION

- | | | | | | |
|----|-----------|---|-----|-----------|-----------------------------|
| 1. | EN | Hanger + hanger hook | 10. | EN | Removable Water tank |
| 2. | EN | Steam Head* | 11. | EN | Draining Cap |
| 3. | EN | Steam Hose | 12. | EN | Removable vertical support* |
| 4. | EN | Adjustable pole + adjustable vertical support hook* + Power cord hook | 13. | EN | Fabric Brush * |
| 5. | EN | Control panel | 14. | EN | Steam bonnet* |
| 6. | EN | ON/OFF button | 15. | EN | Lint pad* |
| 7. | EN | Steam level led* | 16. | EN | Glove* |
| 8. | EN | Anti-calc button | 17. | EN | Crease attachment* |
| 9. | EN | Water tank button | | | |

* **EN** Depending on model

1. ASSEMBLY



EN

Open the two pole locks.



EN

Extend the pole fully.



EN

Close the two locks.



EN

Insert the pole in the housing until you hear a "click".



EN

Unlock the hanger and fully insert it vertically on top of the pole and lock it.



EN

Position the steam head on its cradle.



EN

Take out the vertical support* from its bag and unroll it.



EN

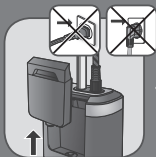
Hook the upper part of the vertical support* on rear hanger.



EN

Unwind the support and insert it in the adjustable hook, by adjusting the tension with the dedicated hook and lock it.

2. BEFORE USE



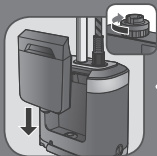
EN

Remove the water tank.



EN

Remove the cap and fill the water tank.



EN

Fully screw the water tank cap and insert tank back in appliance.



EN

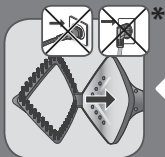
Add the garment of your choice on the hanger.

3. ACCESSORIES



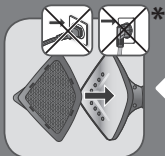
EN

Ensure the appliance is unplugged and completely cool when adjusting or removing accessories.



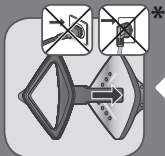
EN

The fabric brush opens the weaves of the fabrics for better steam penetration.



EN

The steam bonnet filters water impurities and protects fabrics from water drips.



EN

The crease attachment is used to make pant creases easily or to remove stubborn wrinkles. Put your fabric in the space between the two accessory parts. Move the crease attachment in a downwards motion starting from the top.

4. USE



EN

The appliance must remain in a horizontal position on the floor.



EN

Totally unroll the cord and plug the appliance.



EN

Push the ON/OFF button, in order to switch on the appliance. The leds will flash for approx 45 seconds.



EN

After 45 seconds approximately, steam will come out.



*

EN

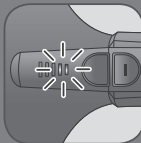
Adjust steam output by pushing the buttons + and - on the steam head.



*

EN

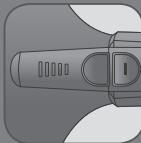
Level max = all leds are bright = steam max



*

EN

level 2 = 2 led bright = steam low



*

EN

level 0 = no led bright = no steam



EN

For optimal use, press the steam jets on your garment from top to bottom.



EN

Never steam a garment while it is being worn. Always hang on the stand or on a hanger.

5. DURING USE



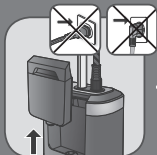
EN

If "WATER" button is flashing, the level of water in the water tank is low and must be filled.



EN

The appliance must be switched off, push the ON/OFF button in order to switch it off.



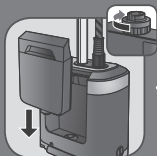
EN

Unplug, then remove the water tank.



EN

Remove the cap then fill in the water tank.



EN

Fully screw the water tank cap and insert tank back in appliance.



EN

Plug in the appliance.



EN

Push the ON/OFF button in order to switch on the appliance. The steam level will flash on maximum level for 45 seconds.

6. AFTER USE



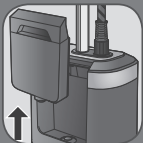
EN

Long push the ON/OFF button in order to switch off the appliance.



EN

Unplug the appliance.



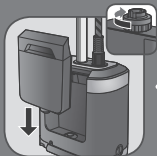
EN

Remove the water tank.



EN

Unscrew the cap and then empty the water tank completely in a sink.



EN

Screw back the cap and place the water tank back in the appliance.



EN

Roll up the power cord and place it on its power cord hook.



EN

Wait for an hour for your appliance to cool before storing.



EN

Make sure the water tank is empty before moving the appliance on its wheel.



EN

To apply when the "anti-calc" button is flashing. Reset by pressing the button.

7. DESCALING PROCEDURE



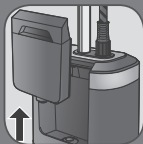
EN

WARNING! Wait for an hour for the appliance to completely cool down.



EN

Unlock and half collapse the pole, lock it.



EN

Remove the water tank.



EN

Fill in 0.5L(litre) of water in the appliance tank inlet.



EN

Shake gently the appliance to remove the main particles.



EN

Place the appliance over a sink & unscrew the «Anti calc» cap by turning it anti clockwise.



EN

Be careful , water might be hot.
Never unscrew the cap when the appliance is in use.
Wait for full cool down.



EN

Tilt the appliance to empty water in a sink.



EN

Set back the draining cap, fully screw it until complete locking and check there is no leakage.



EN

Unlock the pole , extend fully, lock.



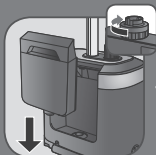
EN

Place the steam head on its cradle.



EN

Remove the cap then fill the water tank.



EN

Fully screw the water tank cap and insert tank back in appliance.



EN

Plug in and switch on the appliance.



EN

Let the appliance run until water tank is emptied completely.

8. CLEANING



1h

EN

Wait an hour for complete cool down.



EN

Only use a sponge with water to clean the base. Never put water on control panel.



EN

Only use a sponge with water to clean the steam head. Never put water on +/- buttons and leds



EN

Never use detergents when cleaning your appliance.



EN

Never wash or rinse appliance directly over a sink.



EN

Never wash or rinse the steam head directly over a sink.



EN

The sponge below the water tank can be removed and cleaned with tap water. Don't forget to put it back.

