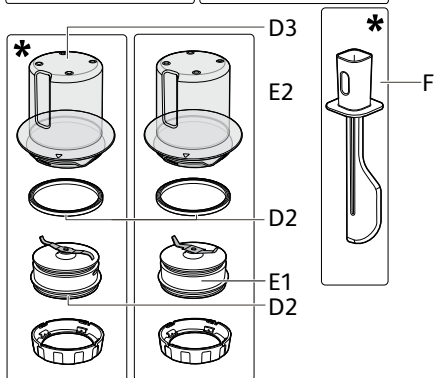
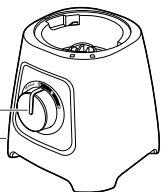


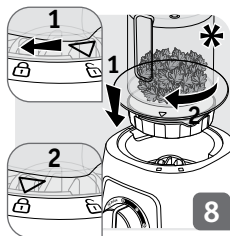
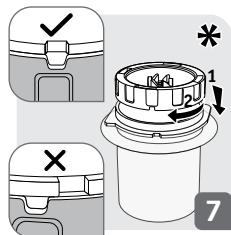
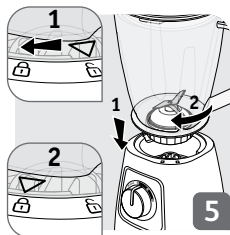
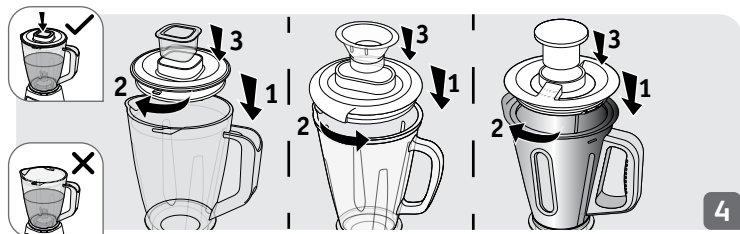
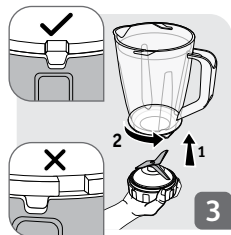
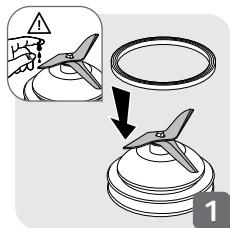
A

B



* depending on the model

* 모델에 따라 다름



* depending on the model

* 모델에 따라 다름

DESCRIPTION

- A Motor unit
- B Speed control dial
- C Blender:
 - C1 Blade support
 - C2 Blade
(*depending on model)
 - C3 Seal
 - C4 Jug
 - C5 Lid
 - C6 Measuring cap
- D Spice mill
(* accessory depending on model)
 - C1 Blade support
 - D1 Spice mill blade
 - D2 Seal
 - D3 Spice mill bowl
- E Herb chopper
(* accessory depending on model)
 - C1 Blade support
 - D2 Seal
 - E1 Herb chopper blade
 - E2 Herb chopper bowl
- F Spatula
(* accessory depending on model)

The accessories supplied with the model that you have purchased are shown on the label on the top of the packaging.

WARNING: Read the instructions for use carefully before using your appliance for the first time: the manufacturer shall accept no liability in the event of any use that does not comply with the instructions. Keep them in a safe place so that you can refer to them later.

SAFETY LOCKING

- The appliance can only operate when the jug (C) or the accessories (D or E) are correctly positioned and locked on the motor unit (A).

USING FOR THE FIRST TIME

- Before you use your appliance for the first time, clean all the accessories (C, D, E, F) using hot soapy water, except for the motor unit (A).

WARNING: The blades are extremely sharp so handle them carefully when using and cleaning the appliance.

- Verify that the packaging has been removed before using the appliance.
- Important note: Turn the speed selector (B) to “0” before placing the blender jug or the accessories on the motor unit.

- The appliance will only start if the jug or the accessory is correctly positioned and locked on the motor unit.
- **WARNING: Do not use the blender if the lid is not in place.**
- Do not use the blender without ingredients or solid ingredients only.

USING YOUR APPLIANCE

Using the blender (C)



- Correctly position the seal (C3) on the blade (C2) (Fig. 1).
- Clip the blade (C2) on the blade support (C1) (Fig. 2)
- Place the blade assembly (C1, C2, C3) on the jug (C4) and lock it by turning the blade anti-clockwise (Fig. 3).

- Put the ingredients in the assembled jug without exceeding the maximum level indicated:

* 1.25 L for thick preparations




* 1 L for liquid preparations

Warning: Do not process boiling liquids (over 80°C/176°F) in the blender jug.

- Lock the lid (C5) on the jug. Place the measuring cap (C6) in the lid opening (Fig. 4).
- Place the assembled jug (C) on the motor unit (A). The open lock  is aligned with the arrow on the jug (Fig. 5 - position 1).
- Then turn the blender jug (C4) a quarter turn until the closed lock  is aligned with the arrow of the jug (Fig. 5 - position 2).
- Plug in the unit and turn it on by turning the speed selector to the desired position or apply a few pulses. To stop the blender, return to position 0.
- 2 positions are possible for the jug handle to the right or to the left of the motor unit.
- Do not use the blender (C) continuously for more than three minutes. Wait a few minutes before switching it on again. Do not use one of the blender accessories (D, E) continuously for more than 30 seconds.

Using the herb chopper (E) or spice mill (D)

- The herb chopper (E) allows you to chop ingredients such as herbs, nuts, onions, garlic, and dried fruit in a few seconds and prepare breadcrumbs.
- Do not use the herb chopper (E) for processing hard spices or ice cubes.
- The spice mill (D) allows you to chop of spices in a few seconds: coriander seeds, peppercorns, coffee beans, etc.

- Do not use the spice mill and the herb chopper for liquid preparations (fruit juice, etc.)
 - These accessories come with a bowl (**D3, E2**) which prevents access to the blades during use.
 1. Turn the bowl (**D3, E2**) upside down and add the ingredients.
 2. Correctly position the seal (**D2**) on the blade (**C1**) (**Fig. 5**).
Clip the blade (**D1 or E1**) to the blade support (**C1**) (**Fig. 6**).
Place the blade assembly (**C1, D1 or C1, E2**) on the bowl (**D3 or E2**) and lock it by turning the blade clockwise (**Fig. 7**).
 3. Turn over the assembled accessory (**D or E**) and position it on the motor unit. The open lock  is aligned with the arrow on the bowl (**Fig. 8 - position 1**).
 4. Then turn the assembled accessory (**D or E**) a quarter turn, anti-clockwise, until the closed lock  is aligned with the arrow on the bowl (**Fig. 8 - position 2**).
 5. Connect the appliance and turn the speed selector (**B**) to the desired position or pulse a few times. Hold the bowl (**D3, E2**) when the appliance is in operation. To turn off the appliance, turn the speed selector (**B**) to put it back to position "0".
 6. Unlock the accessory by turning it a quarter turn, anti-clockwise, until the closed lock  is aligned with the arrow of the bowl. Remove the assembled accessory (**D, E**) from the motor unit.
Put it to the worktop before unlocking the blade (**D1, E1**) from the bowl (**D3, E2**) by reversing the order of assembly. The blades are very sharp: handle very carefully to avoid injury. You can then remove the preparation in the bowl.
- * The colour of the bowl can change after the mixing of certain very hard ingredients (cloves, cinnamon, etc.).

Ingredients	Quantities (max.)	Operating time	Accessory
Apricots/Figs	*600W _ 40 g	4 seconds at speed 2	E
Apricots/Figs	*700W _ 80g	4 seconds at speed 2	E
Rusks	1 biscuit	10 pulses	E
Onions	60 g	8 pulses	E
Shelled almonds/ hazelnuts	60 g	20 pulses	E
Fresh coriander/ parsley	10 g	5 pulses	E
Coffee beans	40 g	30 seconds at speed 2	D
Ice crushed	x6 max	8 pulses	C

CLEANING YOUR APPLIANCE

- Never immerse the motor unit **(A)** in water and never place it under running water.
- Unplug the appliance and remove the accessories.
- **Handle them with care: the blades of the blender jug and the accessories are sharp.**
- Remove the jug **(C)** or bowl **(D3 or E2)**, then rinse it and its lid under running water.
- Clean the motor unit **(A)** with a damp cloth. Dry it carefully.
- To make cleaning easier, wash all removable parts with water and a little washing-up liquid immediately after use.
- To make it easy to clean the blender jug **(C4)**, unlock the blade **(C2, D2, E2)** by turning it a quarter-turn, anti-clockwise. It is possible to unclip the blade support **(C1)** to make cleaning easier. Remove the seal **(C3)** and clean the blade support and blade using running water.
- After cleaning, remember to correctly fit the seal **(C3 or D2)** back onto the blade unit. Be careful to avoid any damage to the seal by the blades cutting it.

Note: Incorrectly fitting the seal can result in ingredients leaking from the blender jug, spice mill or herb chopper.

CLEANING THE JUG (PLASTIC, GLASS OR STEEL VERSION DEPENDING ON MODEL) IN A DISHWASHER:

- The plastic, glass or steel jug (C4), the the lid (C5), the cap (C6), the spice mill bowl (E2), the herb chopper bowl (D3), as well as the spatula (F) can be cleaned in the upper basket of a dishwasher using the “ECO” or “REDUCED SALT” programme. **The blades of the blender jug (C2), the seals (C3 & D2), spice mill (E1) and the herb chopper (D1) must not be cleaned in a dishwasher.**

WHAT TO DO IF YOUR APPLIANCE DOES NOT WORK?

Problems	Causes	Solutions
The appliance does not work.	The appliance is not properly plugged into the electrical outlet.	Plug the appliance into an electrical outlet and turn it on.
	The jug or the accessory is not correctly positioned or locked on the motor unit.	Check that the jug or the accessory is properly positioned and locked in the motor unit as shown on the images of the Instructions for Use.
Excessive vibrations.	The appliance is not placed on a flat, stable and heat-resistant surface.	Place the appliance on a flat surface.
	The volume of ingredients is too big.	Reduce the quantity of ingredients in the appliance.
There are leaks at the lid.	The volume of ingredients is too big.	Reduce the quantity of ingredients in the appliance.
	The lid is not correctly positioned.	Lock the lid correctly on the blender jug.
There are leaks at the base of the blender jug	The seal of the blender jug (C3) is not correctly positioned or is missing.	Reposition the seal and lock the blade correctly (C2).

Problems	Causes	Solutions
There are leaks at the base of the accessories (spice mill or herb mill).	The seal (D2) is not correctly positioned or is missing.	Reposition the seal on the blade support (D1, E1) and lock the assembly correctly on the bowl (D3, E2).
	Making a liquid preparation in the accessory.	Do not use liquid in the accessory because this usage is not possible.
The blades have difficulty turning.	The pieces of food are too large or too hard.	Reduce the quantity or size of ingredients. Add liquid (for blender only).

IS YOUR BLENDER STILL NOT WORKING?

- Contact an authorised repair centre (see the list provided in the documentation concerning the after-sales service).
- You can customise your blender with the following accessories available from your usual distributor or an authorised service repair: Spice mill accessory (**D**), herb chopper accessory (**E**), additional blender jug (**C4**), spatula (**F**).