

# AUTOTEST

1 / Enter to the autotest mode

Initial conditions : To be in standby mode.  
YYWW indicates the program date.



A

↑ 2 sec ↑

2 / Top CTN test

XXX = Top lid CTN temperature



B

3 / Lid opening / closing sensor test



C

YYYY = Lid status  
L254 : Lid closed  
L000 : Lid opened

4 / Software version



A

ZZ = Software version

5 / Control panel test

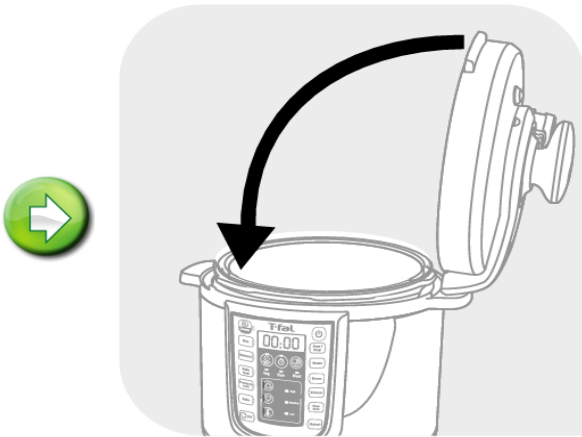
Press all buttons except the start button and the corresponding Led is light up.



A

6 / Bottom NTC test


When the all Leds are light up except the start led :



A - C

7 / Exit autotest mode



<b>Actions</b>	
 <b>A</b>	Replace control panel / Display PCB
<b>B</b>	Replace Lid NTC
<b>C</b>	Replace Lid opening / closing sensor

<b>Error codes</b>	
<b>E0</b>	Lid temperature sensor is faulty.
<b>E1</b>	The bottom sensor is open or short circuit.
<b>E2</b>	Lid is not locked.
<b>E5</b>	Abnormal low pressure.