



SEB INTERNATIONAL SERVICE

P2580.. / P2584..

P2590.. / P2594..

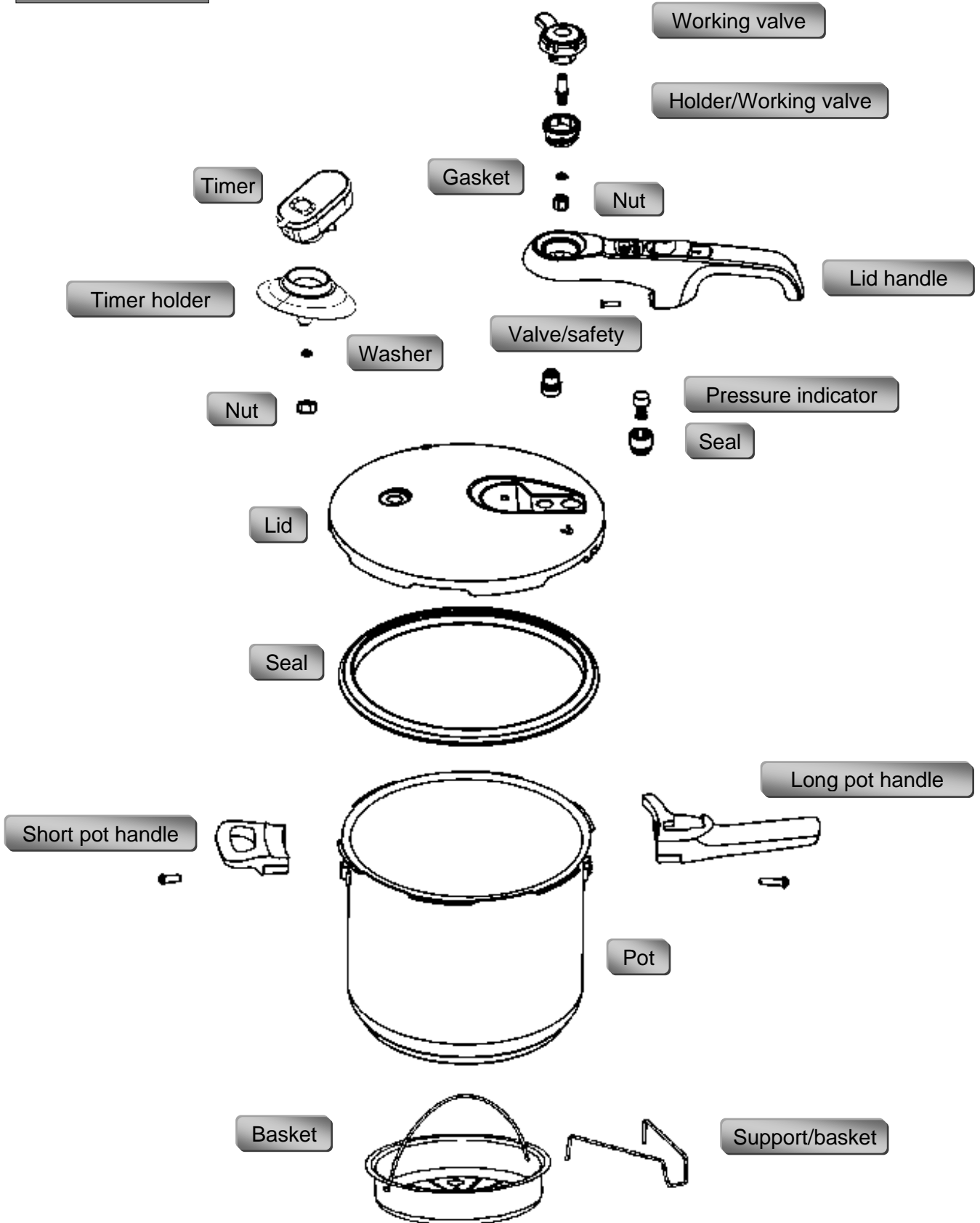
MANUEL SAV - SAV MANUAL





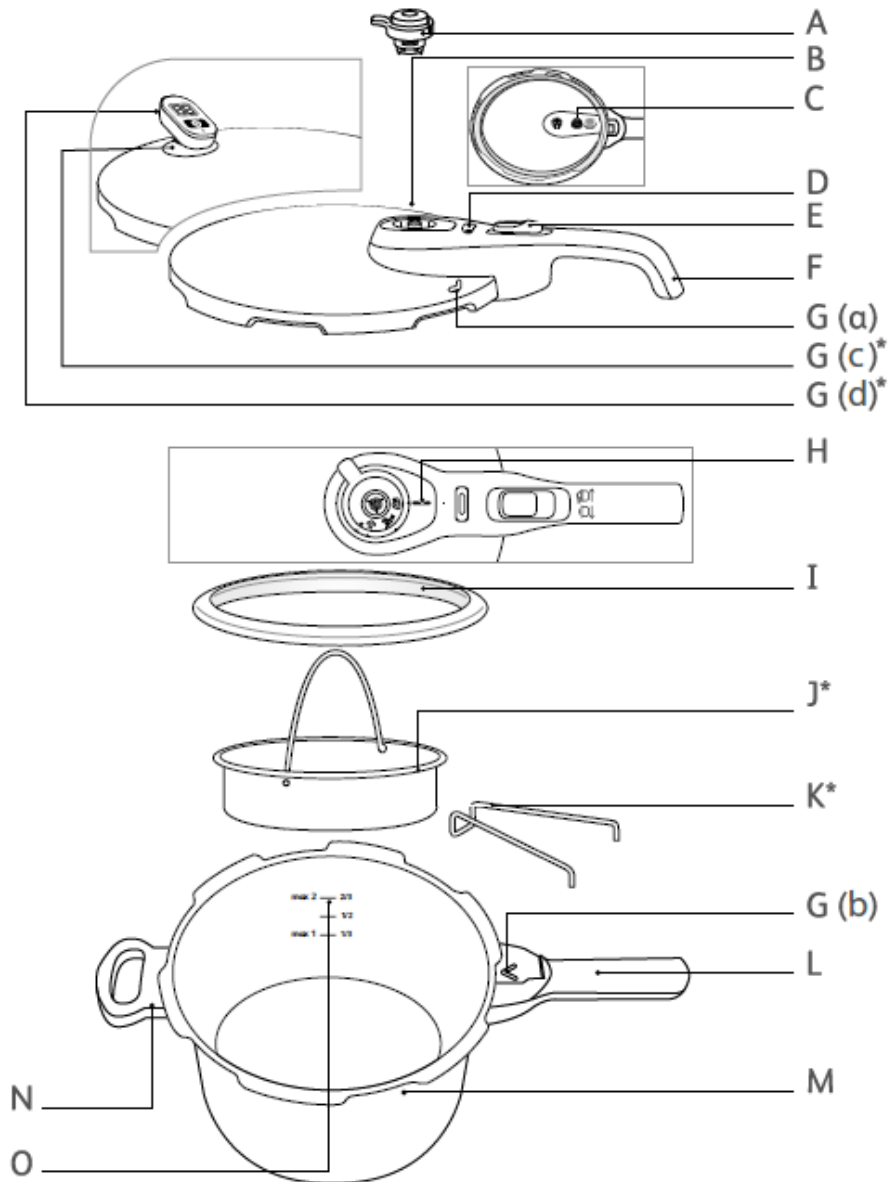
# TECHNICAL FEATURES

## DESCRIPTION





## TECHNICAL FEATURES



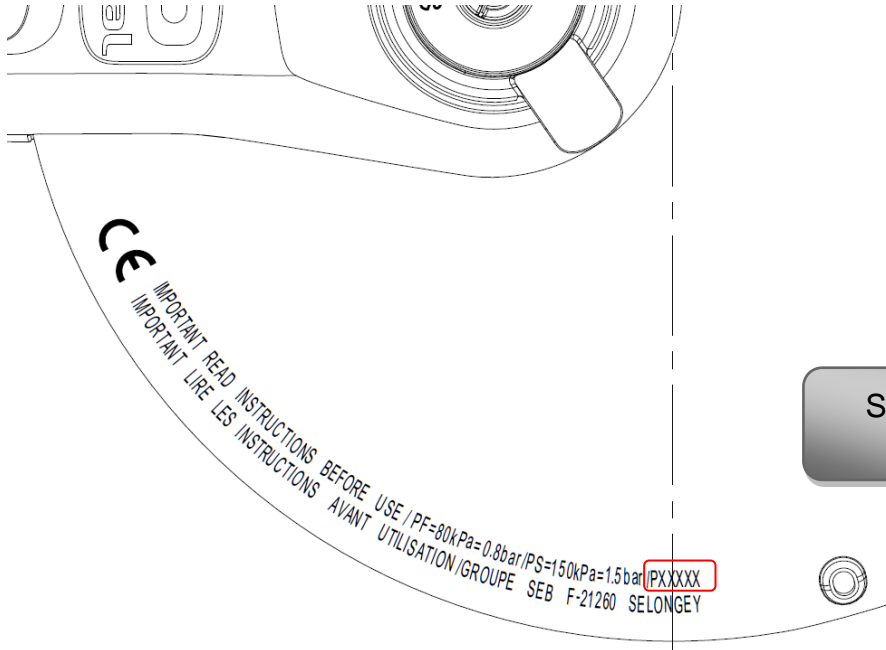
### Description

- |  |  |
|--|--|
| <b>A</b> : Operating valve.              | <b>G (d)</b> : Timer*.                       |
| <b>B</b> : Steam release outlet.         | <b>H</b> : Operating valve positioning mark. |
| <b>C</b> : Safety valve.                 | <b>I</b> : Lid gasket.                       |
| <b>D</b> : Pressure indicator            | <b>J</b> : Steam basket*.                    |
| <b>E</b> : Lid release button.           | <b>K</b> : Trivet*                           |
| <b>F</b> : Lid handle.                   | <b>L</b> : Long pot handle.                  |
| <b>G (a)</b> : Lid positioning mark.     | <b>M</b> : Pot.                              |
| <b>G (b)</b> : Lid-pot positioning mark. | <b>N</b> : Short pot handle                  |
| <b>G (c)</b> : Timer base*.              | <b>O</b> : Maximum fill level mark           |



# TECHNICAL FEATURES

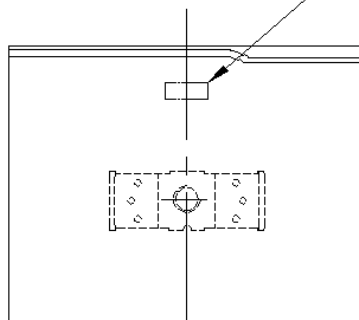
## ⇒ TRACABILITY



Simplified product reference.

Capacity	Total Capacity**	Ø Cooker	Ø Base	STAINLESS STEEL model without timer	Stainless steel model with timer*
3 L	3,7 L	20 cm	17 cm	P25840	P25940
4 L	4,7 L	22 cm	15 cm	P25804	P25904
6 L	6,7 L			P25807	P25907
7 L	7,7 L			P25808	P25908
8 L	8,7 L			P25844	P25944

year and date  
XX      XXX



Date of manufacture of the product (YYDDD).



## TECHNICAL FEATURES

### SAFETY

Standards information: Upper operating pressure: 80 kPa (12 psi)  
Maximum safety pressure: 150 kPa (22 psi)



### Description

- 1 : Working valve.
- 2 : Safety valve.
- 3 : Safety on opening: the locking rod prevents any opening if there is pressure in the product.
- 4 : Safety on closing: in the event of incomplete closing, the locking rod cannot rise, thus preventing the product pressure from rising. Pressure indicator
- 5 : Seal creep.



## INSTRUCTIONS FOR USE

### Opening

- Using your thumb, pull back on the lid release button (E) and hold it in the retracted position - Fig. 1.
- Holding the long handle of the pot(L) with one hand, turn the long handle of the lid (F) with the other hand in an anti-clockwise direction until open - Fig. 2.
- Then lift the lid.
- Do not open the pressure cooker until the unit has cooled and all internal pressure has been released. If the handles are difficult to push apart, this indicates that the cooker is still pressurised - do not force it open. Any pressure in the cooker can be hazardous



Fig.1

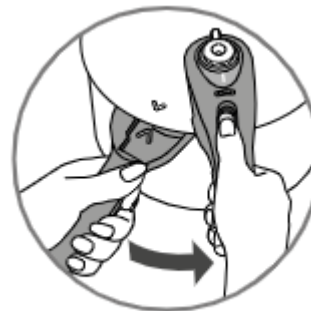


Fig.2

### Closing

**When the appliance is closed but not in operation, it is normal for the lid to move slightly relative to the pot. This effect disappears when the product is pressurised**

- Place the lid horizontally onto the pot, aligning the lid positioning marks G(a) and G(b).- Fig.3
  - Turn the lid in a clockwise direction until it stops - Fig. 3 and you hear the button click as it engages - Fig. 4.
- If you are unable to turn the lid, ensure that the opening button (E) is properly retracted.



Fig.3

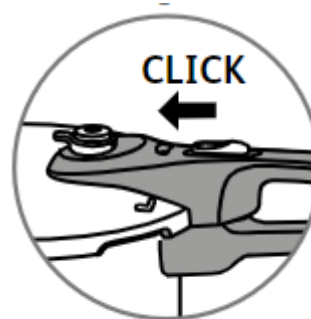
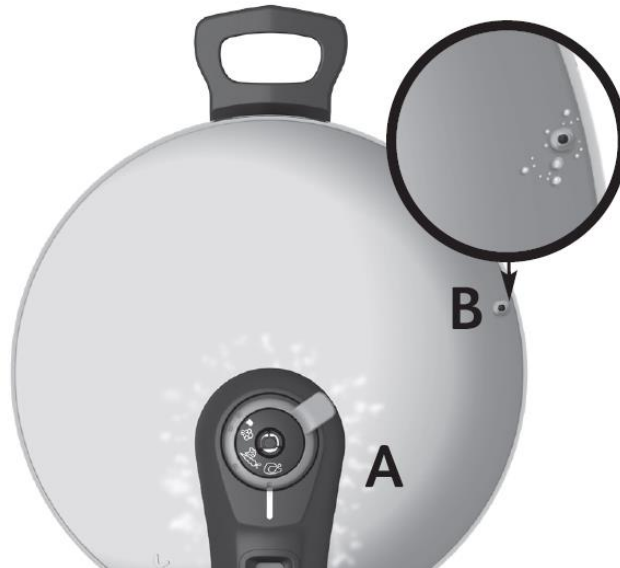


Fig.4



## INSTRUCTIONS FOR USE

### Leakage



Small amounts of steam escape in area A and water droplets in area B during the cooking process. Steam may also escape from the operating valve.

## CLEANING and MAINTENANCE

Any browning or streaks that may appear after a long period of use do not negatively affect the product

Was your pressure cooker after each use

- Never put the operating valve (A), the gasket (I), the cook control\* (G(d)), in the dishwasher.
- Never place the timer\* (**G (d)**) in water.
- Never use bleach or chlorine-based products, which could affect the quality of the stainless steel.
- Do not let the lid soak in water.
- Change the gasket every year, or immediately if it is split or shows signs of cracking..
- To store your pressure cooker: rest the lid upside down on the pan, to avoid premature wear of the lid's gasket.

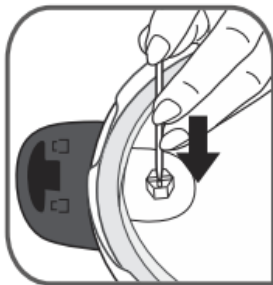


fig. 9

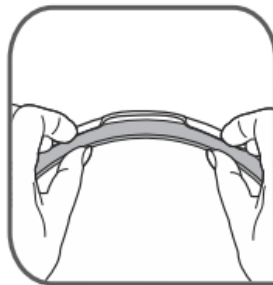


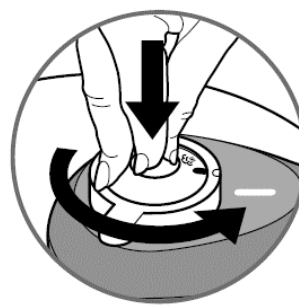
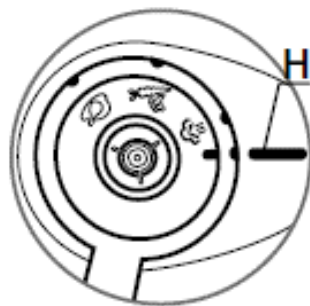
fig. 10

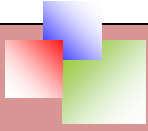


fig. 11



fig. 12

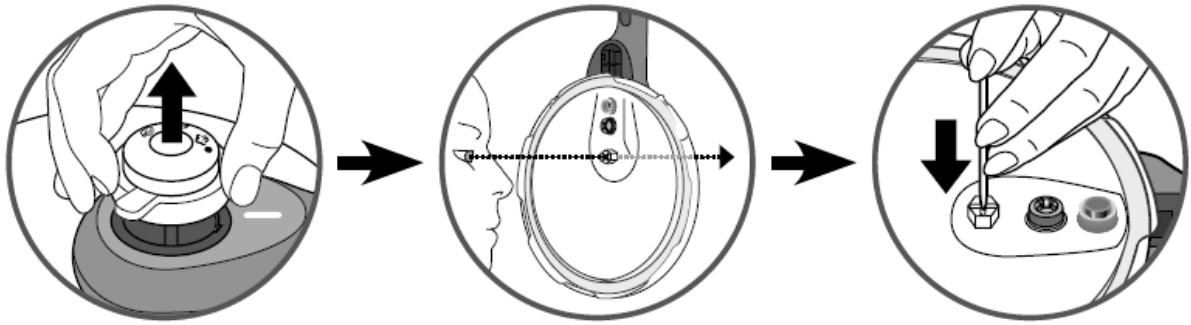




## CLEANING and MAINTENANCE

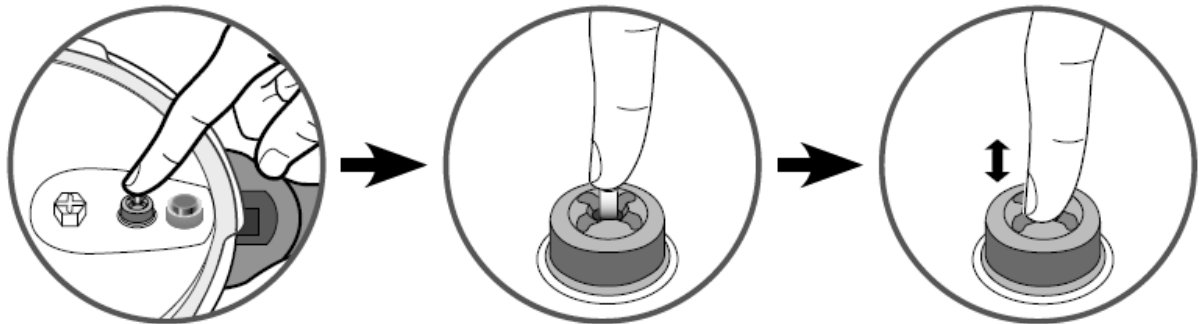
### Checking and cleaning the Operating Valve

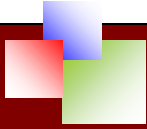
#### Checking the Operating Valve



### Checking and cleaning the Safety Valve

#### Checking the Safety Valve





## DISMANTLING + RECOMMENDATIONS FOR REFITTING

### What you need

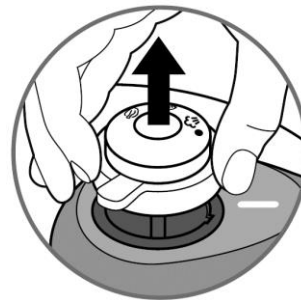


1 torx T20 screwdriver



10 & 12 mm spanners

### Operating valve

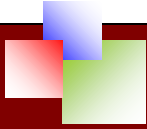


### Seal



### Outlet + Operating valve base plate





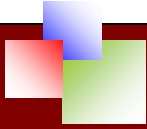
## DISMANTLING + RECOMMENDATIONS FOR REFITTING

### Outlet + Operating valve base plate (next)



### Lid handle





## DISMANTLING + RECOMMENDATIONS FOR REFITTING

### Safety valve



### Timer support



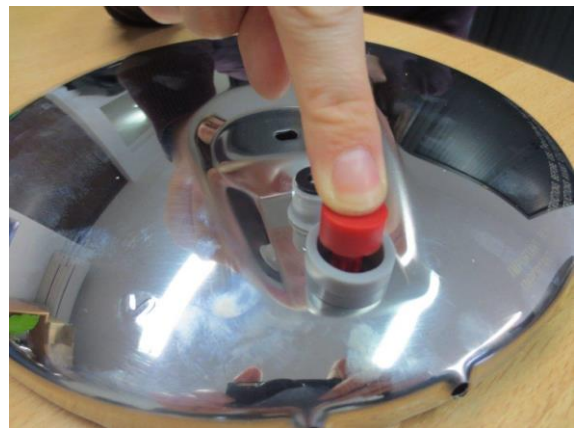
## DISMANTLING + RECOMMENDATIONS FOR REFITTING

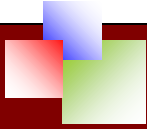
### Re-assembly the Safety valve



Please make sure the safety valve have been put in the right position and no crack on it

### Re-assembly the Pressure indicator



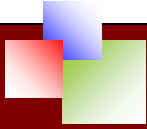


## DISMANTLING + RECOMMENDATIONS FOR REFITTING

– (next)



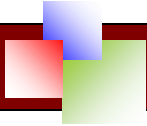
Check the groove is in the right position like the picture



## DISMANTLING + RECOMMENDATIONS FOR REFITTING

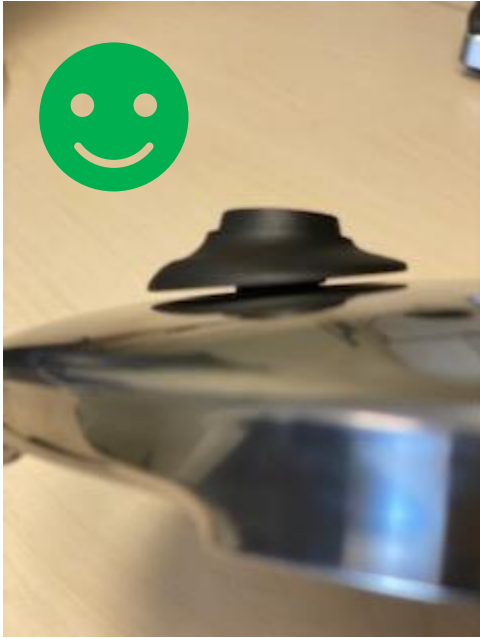
### Re-assembly pot handles–










## DISMANTLING + RECOMMENDATIONS FOR REFITTING

Timer support re assembly





## CHECKS

ELEMENTS	CHECK POINTS	TROUBLE SHOOTING
	<ul style="list-style-type: none"> <li>▶ Check that there is no hard point.</li> </ul>	<ul style="list-style-type: none"> <li>■ Change the lid handle</li> </ul>
	<ul style="list-style-type: none"> <li>▶ Absence of cut</li> </ul>	<ul style="list-style-type: none"> <li>■ Change the seal</li> </ul>
	<ul style="list-style-type: none"> <li>▶ Flexibility</li> </ul>	<ul style="list-style-type: none"> <li>■ Change the seal</li> </ul>
	<ul style="list-style-type: none"> <li>▶ Cleanliness</li> </ul>	<ul style="list-style-type: none"> <li>■ Clean</li> </ul>
	<ul style="list-style-type: none"> <li>▶ Correct fitting under the lid roll</li> </ul>	<ul style="list-style-type: none"> <li>■ Check the fitting and condition of the seal</li> </ul>
	<ul style="list-style-type: none"> <li>▶ Tightening of the rod on the lid, movement of the operating valve</li> </ul>	<ul style="list-style-type: none"> <li>■ Change it</li> </ul>
	<ul style="list-style-type: none"> <li>▶ Mobility of the pressure indicator.</li> </ul>	<ul style="list-style-type: none"> <li>■ Change it</li> </ul>
	<ul style="list-style-type: none"> <li>▶ Security valve: piston movement, no leakage</li> </ul>	<ul style="list-style-type: none"> <li>■ Change the valve</li> </ul>