

# Rowenta®

EN User guide



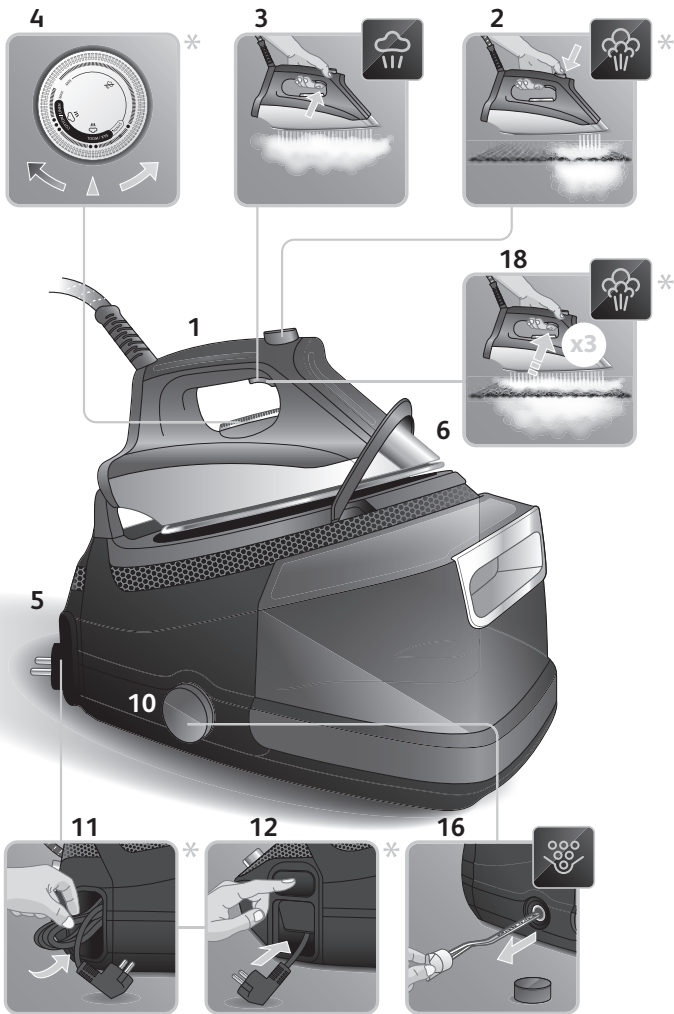
## SILENCE STEAM

EN For further usage information

[www.rowenta.com](http://www.rowenta.com)

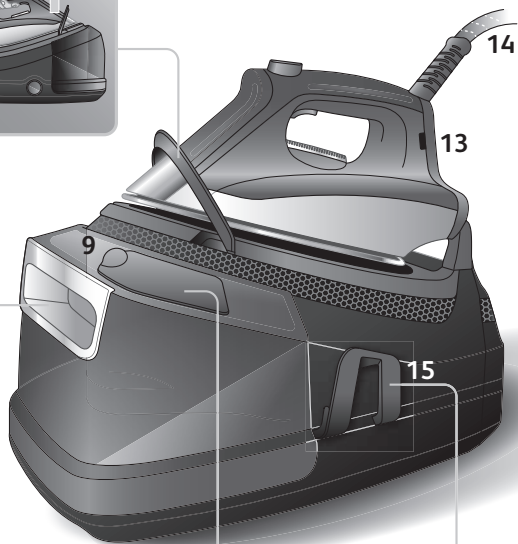
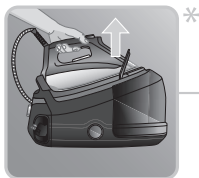


1800137584\_DG89XXG0 – GRI

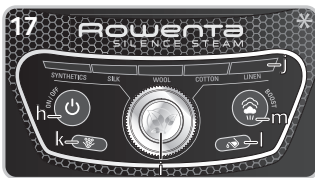
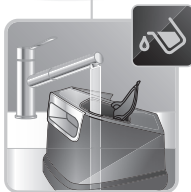


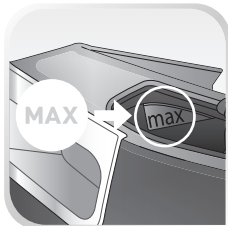
\* Depending on model.

7

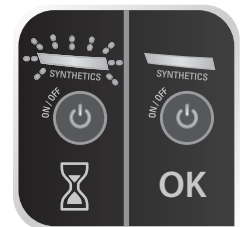
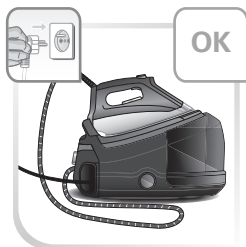
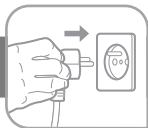


8



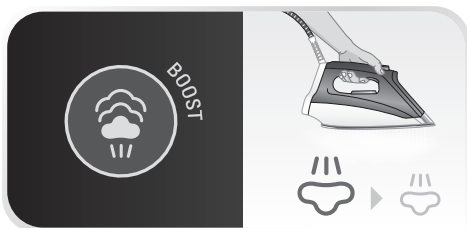
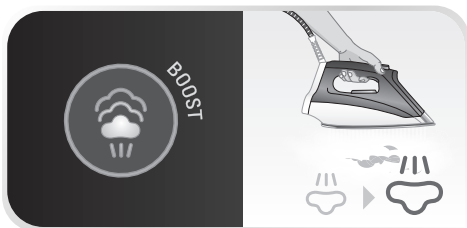


\* Depending on model.

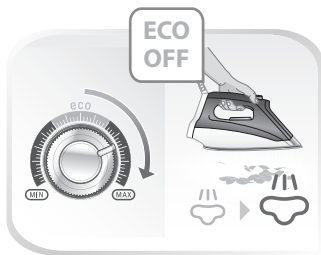
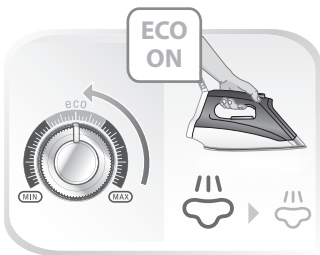
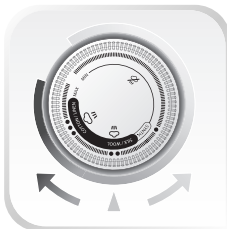
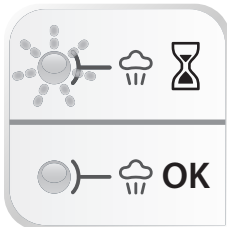
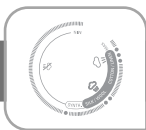




SYNTHETICS	SILK	WOOL	COTTON	LINEN		
SYNTHETICS	SILK	WOOL	COTTON	LINEN		
SYNTHETICS	SILK	WOOL	COTTON	LINEN		
SYNTHETICS	SILK	WOOL	COTTON	LINEN		
SYNTHETICS	SILK	WOOL	COTTON	LINEN		



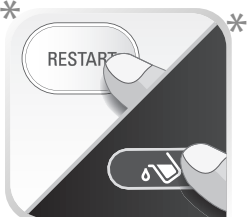
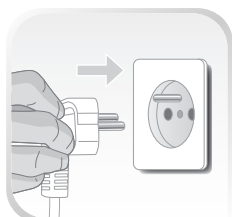
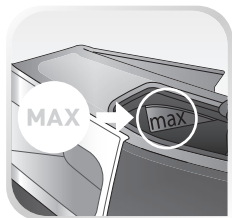
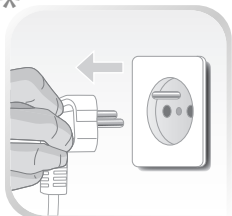
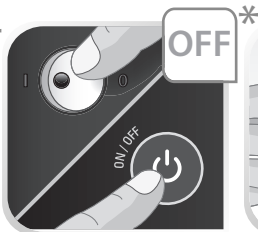
\* Depending on model.



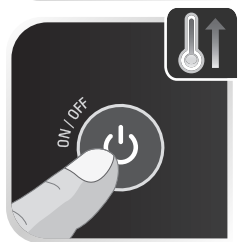
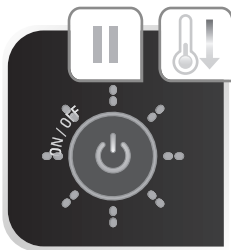


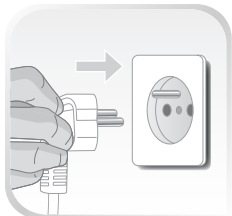
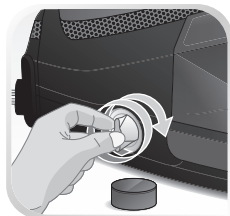
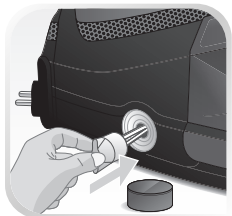
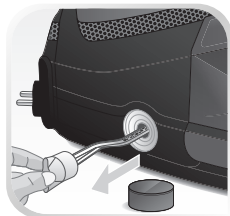
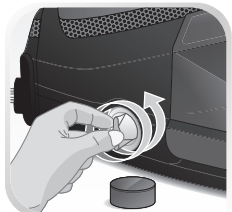
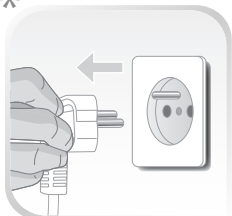
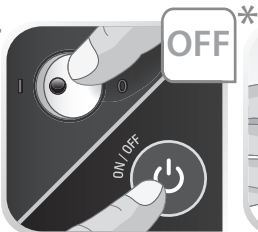
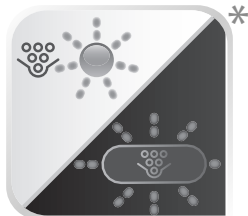
\* Depending on model.



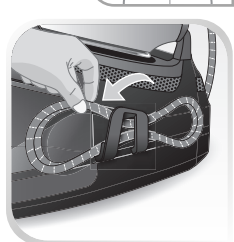
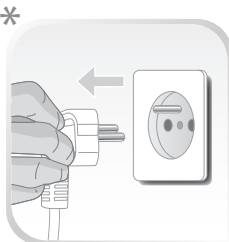
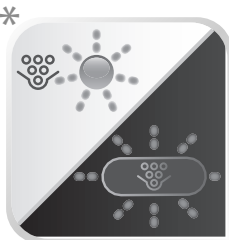


\* Depending on model.





\* Depending on model.



\* Depending on model.



# Important recommendations

## Safety instructions

- Please read these instructions carefully before first use. This product has been designed for domestic and indoor use only. Any commercial use, inappropriate use or failure to comply with the instructions, the manufacturer accepts no responsibility and the guarantee will not apply.
- Never unplug the appliance by pulling the power cord. Always unplug your appliance:
  - before filling the water tank or rinsing the boiler,
  - before cleaning the appliance,
  - after each use.
- The appliance will not work without the limescale collector (depending on model).
- The appliance must be used and placed on a flat, stable, heat-resistant surface. When you place the iron on the iron rest, make sure that the surface on which you place it is stable.
- This appliance is not intended to be used by persons (including children) with reduced or impaired physical, sensory or mental capabilities or persons lacking appropriate knowledge or experience, unless a person responsible for their safety provides either supervision or appropriate instructions concerning use of the appliance prior to its use.
- Children should be supervised to ensure they do not play with the appliance.
- This appliance may be used by children aged 8 or over and

persons lacking appropriate knowledge or experience or persons with reduced or impaired physical, sensory or mental capabilities provided that they have been thoroughly instructed regarding use of the appliance, are supervised, and understand the risks involved. Children shall not play with the appliance. Cleaning and user maintenance shall not be made by children without supervision. Keep the iron and its cord out of reach of children less than 8 years of age when it is energized or cooling down.



- The surfaces which are marked with this sign and the soleplate are very hot during the use of the appliance. Do not touch these surfaces before the iron has completely cooled down.
- Never leave the appliance unattended when it is connected to the mains. Before storing the appliance, once it is unplugged, please wait until it has cooled down (around 1 hour).
- Do not use any descaling products (vinegar, industrial descaling products, etc.) to rinse the boiler: they may damage the appliance.
- Before rinsing the boiler/rinsing the anti-calc collector (depending on the model), wait until the appliance is completely cold and has been unplugged for at least 2 hours before unscrewing the boiler rinse cap/ the scale collector cover.
- Warning: if the boiler cap or the boiler rinse cap (depending on the model), is dropped or severely knocked, have it replaced by an Approved Service Centre, as it may be damaged.
- Never fill the boiler directly from the tap.

- The boiler cap must not be opened during use.
- The appliance must not be used if it has been dropped, if it has any visible damage, if it leaks, or if it functions abnormally in any way. Do not attempt to dismantle your appliance: have it examined at an Approved Service Centre to avoid any danger.
- Check the electrical power and steam cords for signs of wear or damage prior to use. If the electrical power cord or the steam cord is damaged, it must be replaced by an Approved Service Centre to avoid any danger.
- Accessories, consumables and end user replaceable parts must be only purchased from an Approved Service Centre.
- For your safety, this appliance conforms to all applicable regulations (Low Voltage Directive, Electromagnetic Compatibility, Environment, etc).
- Your steam generator iron is an electrical appliance: it must be used under normal conditions of use. It is designed for domestic use only.
- It is equipped with 2 safety systems:
  - a pressure release valve designed to avoid excessive pressure. In the event of malfunction, the valve releases excess steam.
  - a thermal fuse to avoid overheating.
- Always plug your steam generator iron:
  - into a mains circuit with voltage between 220 V and 240 V (Alternating current only),
  - a socket outlet with an earth connection.Connecting to the wrong voltage may cause irreparable damage to the appliance and will invalidate your guarantee.
- Do not use an extension lead. If you accept liability for doing so, only use an extension lead which is in good condition, has a plug with an earth connection and is suited to the power rating of the appliance.
- Completely unwind the power cord before plugging into an earthed socket outlet.
- The sole plate of your iron and the iron rest on the base unit can reach extremely high temperatures, and can cause burns: do not touch them. Never touch the electrical power cords with the sole plate of the iron.
- Always use a vented/mesh ironing board to prevent water spots on clothes and to avoid hot steam venting sideways.
- Your appliance emits steam, which can cause burns. Always handle the iron with care, especially when ironing vertically. Never direct the steam towards people or animals.
- Never immerse your steam generator iron in water or any other liquid. Never place it under a running tap.

**PLEASE RETAIN THIS INSTRUCTION  
BOOKLET FOR FUTURE REFERENCE**



# PLEASE REFER TO SAFETY INSTRUCTIONS AT THE BEGINNING OF THIS BOOKLET BEFORE USING YOUR APPLIANCE

## Description

1. Iron handle
2. Precision shot button (concentrated steam button at the upper part)
3. Steam trigger
4. Iron temperature control dial
5. Base unit
6. Precision tip
7. Locking system
8. Removable 1.5L tank
9. Tank filling shutter
10. "Calc away system" scale collector cover
11. Electric cord storage compartment
12. Automatic cord rewind button
13. Iron rest
14. Steam cord
15. Steam cord storage clip
16. "Calc Away System" scale collector
17. Control panel
  - a. Steam output control dial
  - b. "Steam ready" light
  - c. ECO mode
  - d. "Restart" button
  - e. "Water tank empty" light
  - f. "Calc Away System" indicator
  - g. "Boost / vertical steam" command
  - h. On/Off button and "auto off" light
  - i. Fabric selection dial
  - j. Selected fabric lights
  - k. "Calc Away System" indicator
  - l. Tank empty button and light
  - m. "Boost / vertical steam" command
18. Burst of steam triple clic

## Preparation

### Safety lock

Your steam generator is equipped with a locking system that holds the iron on to the base unit in order to facilitate transport and storage.

The safety lock allows you to carry your steam generator by the iron handle:

- place the iron on the iron rest of the steam generator and lock it into place (you will hear an audible "click" sound)
- Hold the iron by its handle in order to transport your steam generator.

### What water to use?

Your appliance has been designed to function with untreated tap water. If your water is very hard (check with your local water authority), it is possible to mix tap water with store-bought

distilled or demineralised water in the following proportions :

- 50 % tap water, - 50 % distilled or demineralised water.

#### •Types of water not to use?

Heat concentrates the elements contained in water during evaporation. The types of water listed below contain organic waste or mineral elements that can cause spitting, brown staining, or premature wear of the appliance : water from clothes dryers, scented or softened water, water from refrigerators, batteries or air conditioners, pure distilled or demineralised water or rain water should not be used in your Rowenta Generator. Also do not to use boiled, filtered or bottled water.

#### Always remember:

Never use rainwater or water containing additives (like starch, fragrance or water from domestic appliances). Such additives can affect the steam properties and at high temperature, form deposits in the steam generator chamber which are likely to stain your washing.

### Preparing your steam generator

- Place the steam generator on a flat, stable, horizontal and heat-resistant surface.
- We recommend that you use a mesh type ironing board to allow steam to pass through the garments for better ironing results and also to prevent steam venting sideways.
- Always ensure that the base unit is positioned close enough to the ironing surface to avoid straining and wear of the steam cord.
- Lift the removable water tank (located at the front of the steam generator) pressing on the lock screw located on the tank handle.
- Fill the tank with untreated tap water, taking care not to exceed the maximum level.
- Slide the tank back into its housing until it "clicks" into place.
- Unwind the electrical power cord completely and remove the steam cord from its housing.
- Plug your steam generator into a mains socket with an earth pin.

## Switch the steam generator on

The first time the appliance is used, there may be some fumes and smell but this is not harmful. They will not affect use and will disappear rapidly.




- Put the steam generator on a flat, stable, horizontal surface that is heatproof.
- Always ensure that the base unit is positioned close enough to the ironing surface to avoid straining and wear of the steam cord.
- Completely unwind the power cord and take the steam cord out of its storage space.
- Plug your steam generator into an earthed socket.
- Press the «ON-OFF» button.
- The «ON-OFF» button light remains flashing while the appliance is warming up. When the light stops flashing (after approximately 2 minutes) the steam generator is ready.

## Operating the control panel

- The green light of the «ON-OFF» button is flashing : the boiler is heating up. When the light stops flashing, the steam generator is ready.
- Your steam generator comes with an automatic shutoff system after approximately 8 minutes without use. The «ON-OFF» button light is flashing: the steam generator is on standby. Press the «ON-OFF» button or the steam shot button to start ironing again. See paragraph «AUTO-OFF» System.
- The red «Water tank empty» button light is flashing: the water tank is empty, refilling is required, See paragraph "refilling the water tank during use".
- The orange "Calc-Away" light is flashing : the collector needs to be rinsed, see paragraph «Maintenance and cleaning».

## Regulation

- Place the iron's temperature control to the type of fabric to be ironed and set the steam output. See the table here below.

TYPE OF FABRIC	SETTING TEMPERATURE	SETTING STEAM CONTROL
SYNTHETICS (POLYESTER, ACETATE, ACRYLIC, POLYAMIDE)	•	
SILK / WOOL **	••	
COTTON / LINEN	•••	

- The iron temperature control light turnson.

**Important:** whenever you start using your iron and whenever you reduce the temperature during use, the iron is ready for use when its temperature control light goes out and when the green light located on the control panel comes on and remains on.

- During use, when you increase the temperature of the iron, you can start ironing immediately, but make sure you only increase your steam output once the iron's thermostat light has gone out.

**Warning, fabrics with the symbol  are not suitable for ironing.**

## ECO Mode (depending on model)







- Your steam generator has an ECO mode function which uses less power whilst still guaranteeing a sufficient steam output for you to iron your garments properly. In order to use this function, once the thermostat of your iron has been correctly set (see table above), position the steam output setting on the ECO segment.

The ECO mode can be used with all types of fabrics. However, for very thick or creased fabrics, we recommend that you use the maximum steam output or the Boost function in order to ensure optimum results.

**I\*\*If you are ironing woolen garments, press repeatedly on the steam shot button without placing the iron on the garment. This will avoid it becoming shiny.**

## Eco Intelligence (depending on model)

- Your steam generator is fitted with an Eco Intelligence electronic control system that provides optimal control of the iron's steam output and temperature according to the selected fabric: this reduces energy consumption and guarantees optimum ironing for each type of fabric.
- Set the control button to the type of fabric to be ironed (see table below).

SYNTHETICS (POLYESTER, ACETATE, ACRYLIC, POLYAMIDE)		
SILK		
WOOL		
COTTON		
LINEN		

## Use

### Steam ironing

**Recommendations:** To prime the steam circuit, either before using the iron for the first time, or if you have not used the steam function for a few minutes, press the steam control button several times in a row, holding the iron away from your clothes. This will enable any cold water to be removed from the steam circuit.

- To obtain steam, press the steam control button under the iron handle. The steam will stop when you release the button.
- After approximately one minute, and regularly while it is being used, your steam generator's electric pump injects water into the boiler. It makes a noise but this is quite normal.
- If you are using starch, always spray it onto the reverse side of the fabric to be ironed.

### "Boost" function\*

- Your generator is equipped with a "Boost" function that allows you to increase steam output during use at particular moments and for particularly difficult areas, for example if you are ironing very thick or very creased fabrics.
- To use this function, set the iron thermostat to the maximum position (●●●) and then press on the Boost button located on the control panel. A blue light turns on.
- To deactivate the Boost function, press the button again. The blue light will then turn off. This function may also be deactivated by turning the steam output control dial.
- The Boost function is deactivated automatically after 15 minutes. The blue light flashes to indicate that the Boost function will turn off, then turns off.

**The Boost function can only be used on the "Wool", "Cotton" and "Linen" positions. For other fabrics, there is no need to use the Boost function as the combinations of "Synthetic" and "Silk" settings are sufficient.**

### Precision Shot

- Your appliance comes with a Precision Shot function: It allows you to make a concentrated steam injection when ironing hard creases, details and difficult access areas.
- To use this function, press fully on the Precision Shot button located on top of your iron as many times as necessary.

### Burst of steam (triple clic)\*

- Your appliance comes with a burst of steam: an automatic sequential steam for effortless use. To be used in particular for thick fabrics.
- To obtain this function, press the steam control button under the handle three times in quick succession.

**Attention! Use the Precision Shot and burst of steam carefully, as the steam comes out with exceptional force and could cause burns.**

### Vertical steam ironing

**Recommendations:** for fabrics other than linen or cotton, hold the iron a few centimetres from the garment to avoid burning the fabric.

For delicate fabrics such as synthetics or wool, it is not necessary to use the "Boost/vertical steam".

- Set the iron temperature control to the maximum position (●●●) and press the Boost/vertical steam button.

\*depending on model

- Hang the garment on a coat hanger and hold the fabric slightly taut with one hand.
- As steam is very hot: never attempt to remove creases from a garment while it is being worn, always hang garments on a coat hanger.
- Holding the iron in a vertical position tilted slightly forwards, press repeatedly on the steam control button (underneath the iron handle) moving the iron from top to bottom.

**Do not iron over zips, studs or other hard or sharp objects which may damage the soleplate. Do not place the iron on a metal support. When taking a break from ironing, always place the iron on the iron rest plate of the unit. It is equipped with nonslip pads and has been designed to withstand high temperatures.**

## Dry ironing

---

- Do not press on the steam trigger.

## Refilling the tank during use

---

- When there is no more steam and the "Water tank empty" light flashes - water tank is empty.
- Remove the water tank using the handle (on the front of the steam generator) - and fill it - do not fill above the Max. level. If this occurs, remove the excess water.
- Push the water tank into position until it "clicks" into place. Press the Restart button on the control panel.
- The steam generator and the iron are ready for use when the steam indicator light is on and the iron indicator goes out.

## Maintenance and cleaning

**Before cleaning, ensure your steam generator is unplugged and that the soleplate and the iron have cooled down.**

- Do not use detergent or descaling products for cleaning the soleplate base-unit.
- Regularly clean the soleplate with a damp, nonmetallic washing up pad.
- Never hold the iron or the base unit under the tap.
- Clean the plastic parts of the appliance occasionally with a soft cloth.

## Easy descaling of your steam generator

---

**IMPORTANT!** This operation must not be carried out unless the steam generator has been unplugged for at least two hours and has cooled down completely.

To carry out this operation, the steam generator must be close to a sink as water may come out of the tank when it is opened.

To extend the life of your steam generator and avoid scale particles appearing on your ironing, your steam generator is equipped with a built-in scale collector. This scale collector, located in the boiler, automatically removes the scale that forms inside.

**Do not use any descaling substances (vinegar, industrial descaling products, etc.) when rinsing the scale collector: they could damage it.**

### Operation:

- An orange "Calc-Away System" light located - on the control panel starts flashing to tell you that the scale collector needs rinsing.
- Once the steam generator has cooled, unscrew the scale collector cover-
- Unscrew the scale collector and remove it from the housing; it contains the scale that has built up in the tank
- To clean the collector properly, just rinse it under running water to remove the scale it contains.
- Put the scale collector back into its housing and screw it in completely to keep it watertight.
- Screw the scale collector cover back in place.
- The next time you use your iron, press the "Restart" button on the control panel to turn off the orange "Calc Away System collector" indicator.

Apart from this regular maintenance process, we recommend that you rinse the boiler completely every 6 months, or every 25 times you use your iron.

**Make sure that the steam generator has been unplugged and allowed to cool for at least 2 hours.**

- Place the steam generator on the edge of your sink and the iron to one side, on its base.
- Remove the collector cover and unscrew the scale collector.
- Hold your steam generator at an angle and use a jug to fill the boiler with 1/4 litre of untreated tap water.
- Shake the base unit for a few seconds then empty it completely into the sink.
- Fit the scale collector back in its housing and screw it in tightly to ensure it is watertight. Do not overtighten the scale collector
- Put the scale collector cover back in place.

**The steam generator does not work without the scale collector.**

Regular descaling of your steam generator helps to maintain its steam performance over time.

## «AUTO-OFF» System)\*

For your safety, the steam generator is fitted with an «AUTO-OFF» monitoring system, which is activated automatically after approximately 8 minutes without use.

- Only the «ON-OFF» button flashes to indicate that the appliance is on standby.

### To reactivate the steam generator:

- Press the «ON-OFF» button or the steam output button.
- Wait for the «ON-OFF» button light to stop flashing before starting your ironing again.
- For your safety, after approximately 30 minutes of non-use, the «AUTO-OFF» system switches off your steam generator. To start your ironing again, press the «ON-OFF» button.

## Storing the steam generator

- Turn off and unplug the steam generator.
- Place the iron on the iron rest on the steam generator.
- Lock the iron onto the base unit by pressing it until you hear an audible "click", so your iron is secure - Fold the steam cord in two and place it in its housing. Wind up the power cord and place it in its storage compartment.
- Leave the steam generator to cool for at least one hour before putting it away if it is to be stored in a cupboard or confined space. You can then store your steam generator safely.
- If you store your steam generator in a relatively cold place (approximately <math>10^{\circ}\text{C}</math>), put it in a warm place before starting your ironing.
- You can store your steam generator safely by carrying it by the iron handle.



### Environment protection first !

- ① Your appliance contains valuable materials which can be recovered or recycled.
- ♻️ Leave it at a local civic waste disposal centre.

## Problems with your steam generator?

PROBLEMS	CAUSES	SOLUTIONS
The steam generator does not switch on or the control panel lights and ON/OFF indicator lights do not switch on.	The appliance is not switched on.	Check that your appliance is correctly plugged in and press the illuminated on/off switch (on the front of the base-unit).
Water runs through the holes in the soleplate.	You are using the steam control button before the iron is hot enough.	Wait for the green lights to stop flashing before activating the steam control.
	Water has condensed in the pipes because you are using steam for the first time or you have not used it for some time.	Press the steam control on the iron away from the ironing board until steam comes out of the iron.
	You are using the Boost function before your iron is hot enough.	Before you use the Boost function, set your temperature control button to Maximum.
The Boost function blue light signal flashes/turns off.	You are using the steam command too often when ironing delicate fabrics.	Activate the steam command moderately when ironing delicate fabrics.
	The Boost function shuts off automatically after 15 minutes: the blue light flashes and then switches off.	This is completely normal. The Boost function is designed for occasional use only.
	You are using the "Synthetics" or "Silk" position (depending on model).	The Boost function can only be used in the "Wool", "Cotton" and "Linen" position. For other fabrics, there is no need to use the Boost function, the combinations of "Synthetics" and "Silk" settings are sufficient.
White streaks come through the holes in the soleplate.	Your boiler has a build-up of scale because it has not been rinsed out regularly.	Rinse the collector when the "Calc-Away System" indicator flashes. If your water is very hard, rinse it more often.

\*depending on model

Brown streaks come through the holes in the soleplate and stain the linen.	You are using chemical descaling agents or additives in the water for ironing.	Never add this type of product in the water tank or in the boiler.
	Fabric fibres have accumulated in the holes of the soleplate and are burning.	Clean the soleplate with a non-metallic sponge. Vacuum the holes from time to time.
	Your linen is not rinsed sufficiently or you have ironed a new garment before washing it.	Ensure linen is rinsed thoroughly to remove any soap deposits or chemicals on new garments which may be sucked up by the iron.
The soleplate is dirty or brown and may stain the linen.	You are not using the correct programme for the fabric.	See our advice about "regulation".
	You are using starch.	Always spray starch on the reverse side of the fabric to be ironed.
There is no steam.	The tank has not been fitted correctly into its housing.	Push it back into its housing until you hear a "click".
	The water tank is empty (red light is flashing).	Fill the water tank and press the "Restart" button on the control panel.
There is little steam.	The soleplate temperature is set to the maximum.	The generator is working but steam is very hot and dry. As a consequence, it is less visible.
	The steam output control dial is set at minimum.	Increase the steam output (control dial on the control panel).
Water streaks appear on the linen.	Your ironing board cover is soaked with water because it is not suited to the power of a steam generator.	Check that your ironing board is suitable. A mesh type ironing board must be used avoid condensation.
The "empty tank" signal light is flashing.	You have not pressed the "empty tank" restart button.	Press the "empty tank" restart button on the control panel.
	The tank is not correctly fitted in its housing.	Push it into the housing until you hear a "click".
Steam escapes from the scale collector valve.	The scale collector valve has not been tightened correctly.	Tighten the collector valve.
	The scale collector valve is damaged.	Contact an Approved Service Centre.
	The generator is faulty.	Do not use the steam generator and contact an Approved Service Centre.
Steam escapes under the appliance.	The generator is faulty.	Do not use the steam generator and contact an Approved Service Centre.
The "Calc-Away" light is flashing.	You have not pressed the "Calc-Away" restart button.	Press the "Calc-Away" restart button located on the control panel.
The red "tank empty" light is flashing and the "On/Off" button is not working.	The appliance has been stored in a cold place (approx. <10C°)	Unplug the appliance. Wait for 3 hours so that the appliance is at room temperature

**If you have any product problems or queries with your product, please telephone our Customer Relations team on:**

**0345 602 1454 (UK) - (01) 677 4003 (ROI)**

**Consult our web site: [www.rowenta.co.uk](http://www.rowenta.co.uk)**