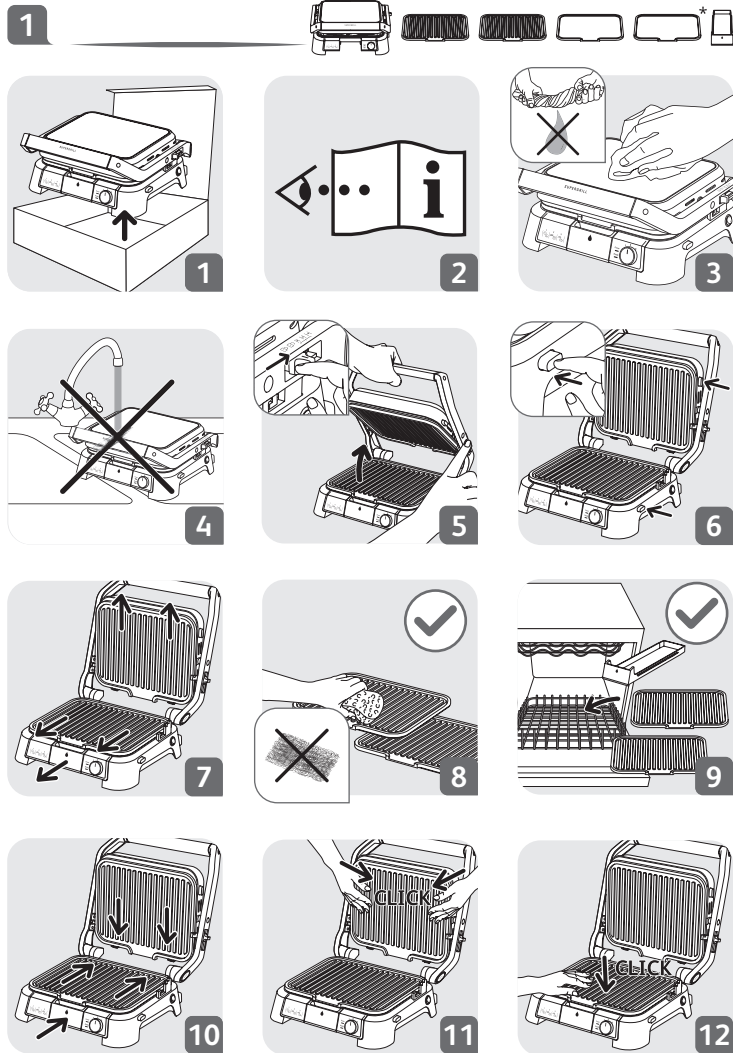
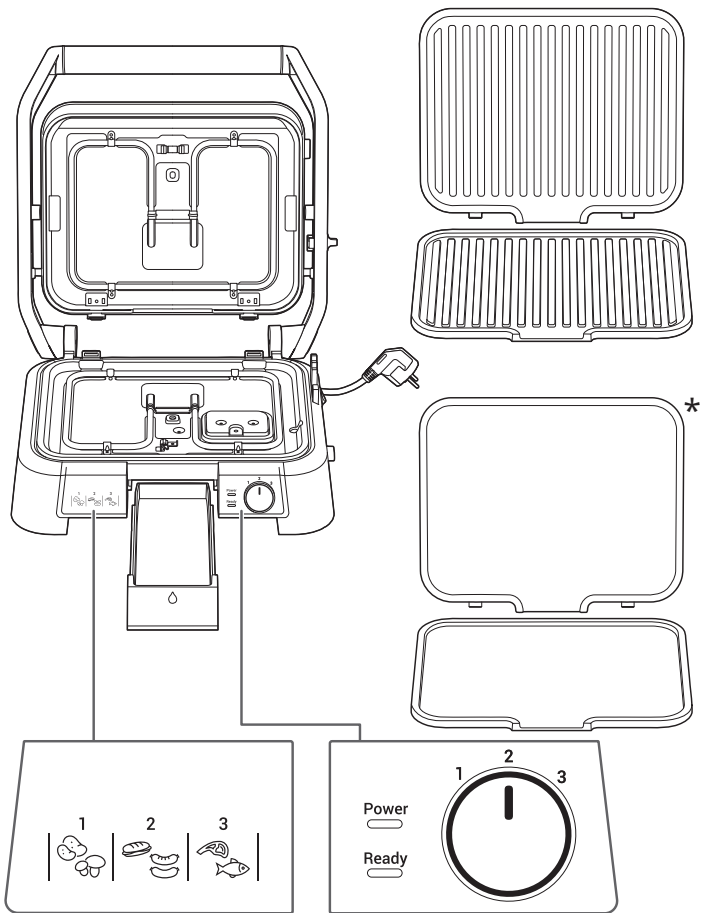




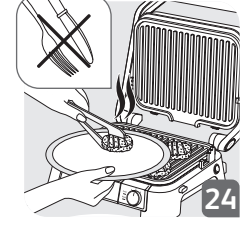
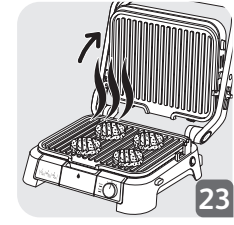
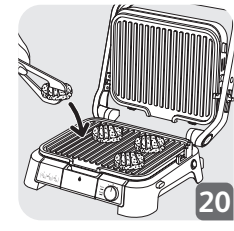
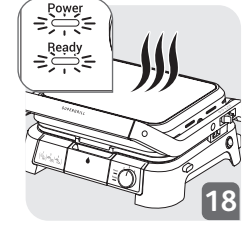
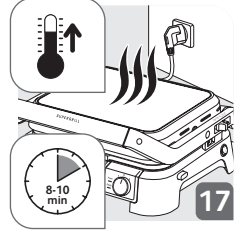
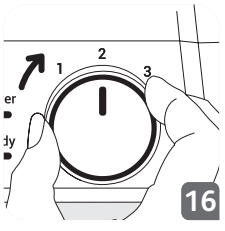
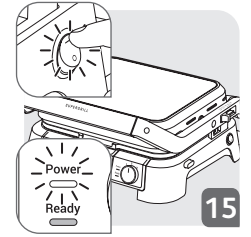
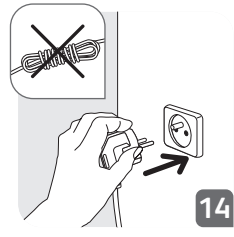
**SuperGrill**

ar  
bg  
cs  
de  
el  
en  
es  
fr  
hr  
hu  
it  
nl  
pl  
pt  
ro  
ru  
tr  
uk  
bs  
da  
et  
fa  
fi  
lt  
lv  
no  
sk  
sl  
sr  
sv

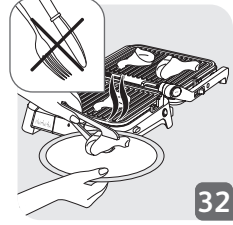
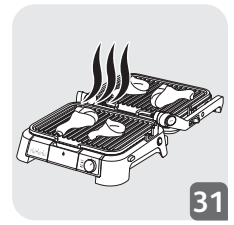
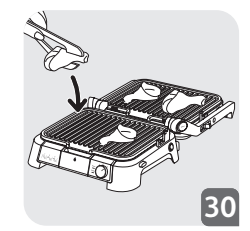
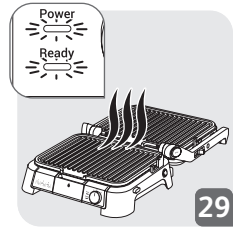
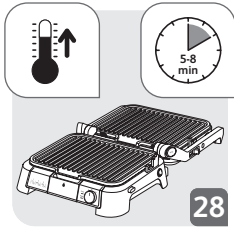
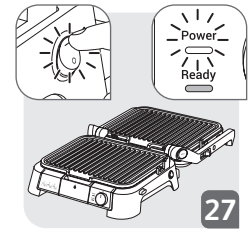


\* الألواح حسب الطراز / Плиточке зависят от модели / Плиточки зависят от модели / Platten je nach Modell /  
 Desky závisí na modelu / Plates depending on model / Placas según el modelo / Plaques selon modèle / Ploče  
 ovise o modelu / Modelltől függő lapok. / Piastre a seconda del modello / De platen zijn afhankelijk van het model /  
 Dostępność płyt zależy od modelu / Placas consoante o modelo / Plăci în funcție de model / Комплект пластин  
 зависит от модели / Plakalar modele bağlı olarak değişebilir / Наявність пластин у комплекті залежить від  
 моделі / Ploče zavise od modela / Plader afhængig af model / Plaadid sõltuvad mudelist / صفحات بستنه به مدل /  
 Levyt mallista riippuen / Plokštes priklauso nuo modelio / Plāksnes atkarīgas no modeļa / Plater avhengig av  
 modell / Dosky závislé od modelu / Plošče glede na model / Ploče zavise od modela / Plattor beroende på modell

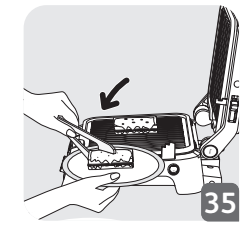
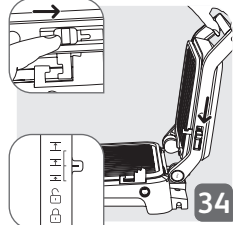
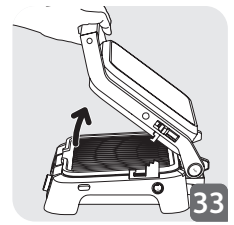
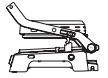
2

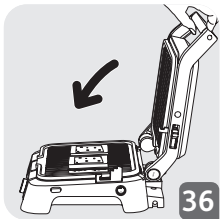


3

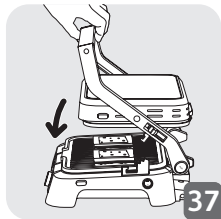


4

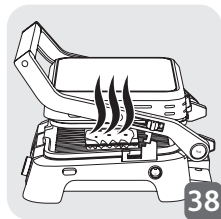




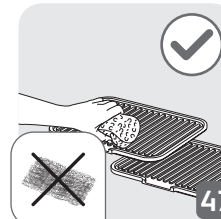
36



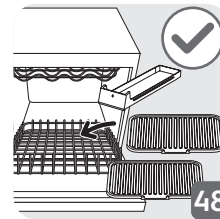
37



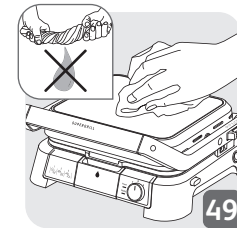
38



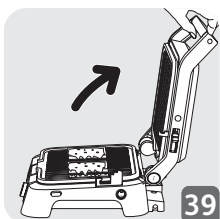
47



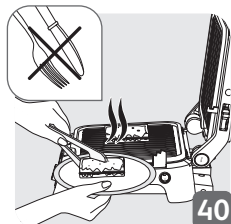
48



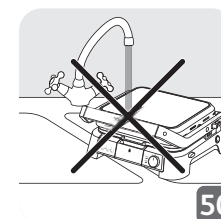
49



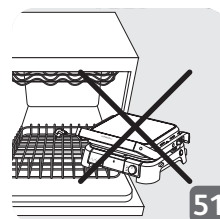
39



40



50

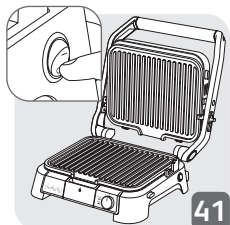
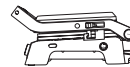


51

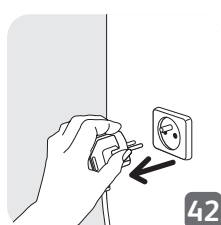
5



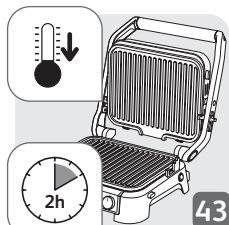
6



41



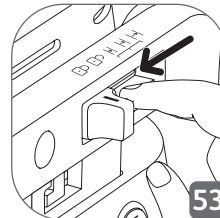
42



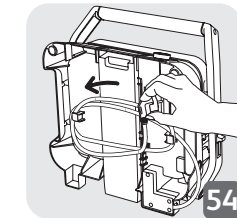
43



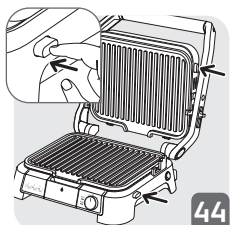
52



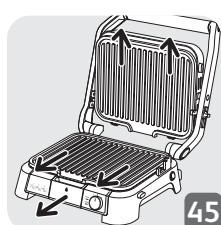
53



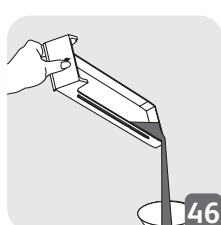
54



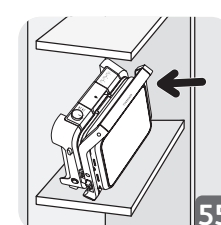
44







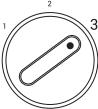











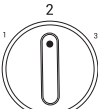



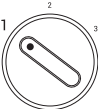

45



46



55

		 *	 T°
		5 - 11 min	
		3-4 min	
		3-4 min	
		5-9 min	
		17-25 min	
		4-10 min	
		4-6 min	
		1-2 min	
		7-9 min	
		5-8 min	
		3-5 min	
		15-25 min	
		3 -7 min	

\* تماخض هب هتسب / В зависимости от дебелината / Podle tloušťky / Je nach Dicke / Ανάλογα με το πάχος / Depending on thickness / Según el espesor / Selon l'épaisseur / Zavisno od debljine / Vastagságtól függően / In base allo spessore / Afhankelijk van de dikte / Zależnie od grubości / Consoante a espessura / În funcție de grosime / В зависимости от толщины / Ковулуға бағли olarak / Залежно від товщини / Ovisno o debljini / Afhængig af tykkelse / Vastavalt paksusele / حسب السماكة / Paksuudesta riippen / Priklausu nuo storio / Atkarībā no biezuma / Avhengig av tykkelse / Podľa hrúbky / Ovisno od debline / У зависимости од деблыне / Beroende på tjocklek