

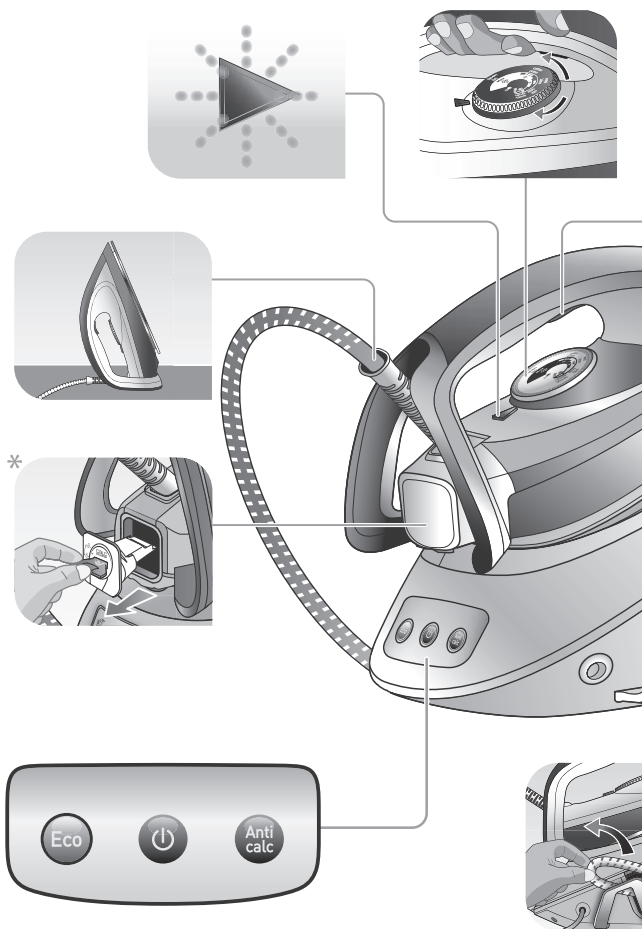


Express Compact

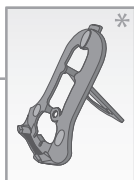
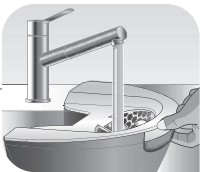
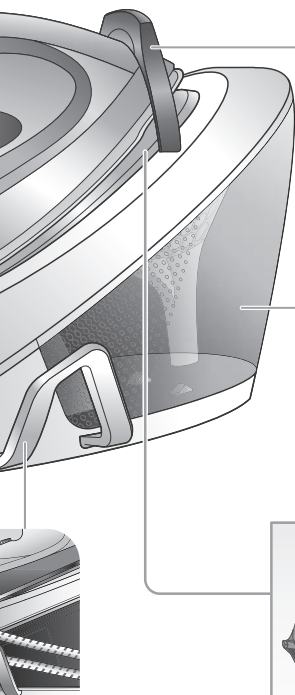
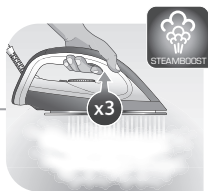
EN

Summary

USING YOUR APPLIANCE	6
1.1 Getting started.....	6
1.2 Filling the water tank.....	9
1.3 Transportation	10
1.4 Settings.....	11
1.5 Vertical steaming	13
1.6 Auto-off	14
MAINTENANCE AND STORAGE.....	15
2.1 Emptying the calc collector*	15
2.2 Descaling your generator	16
2.3 Cleaning	19
2.4 Storage	20
SAFETY INSTRUCTIONS	21
TROUBLESHOOTING.....	27
TEFAL INTERNATIONAL GUARANTEE.....	30



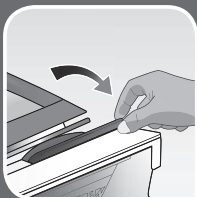
* Depending on the model



www.Tefal.co.uk



USING YOUR APPLIANCE

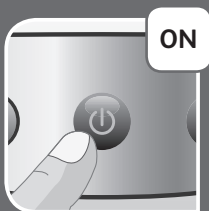


1.1 Getting started

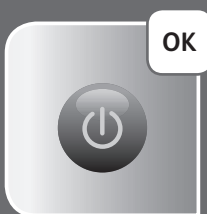
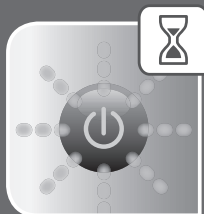
Express Compact is equipped with a lock system to hold the iron onto the base for easy transport and storage.

- Unlock your steam generator.
- Completely unwind the power cord and take the water cord out of its storage space.
- Fill the water tank with tap water up to the max indication. Put the tank back into the appliance by pushing in until it locks into place.
- Plug your steam generator.

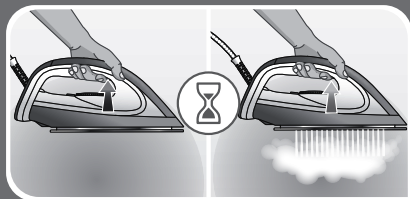
USING YOUR APPLIANCE



- Press the «ON-OFF» button on control panel.
- The «ON-OFF» button light remain flashing while the appliance is warming up.



- The steam generator is ready for use. The ECO mode can still be selected even if the "ON-OFF" button light remains flashing. After 2 minutes, the light of the "ECO" or "ON-OFF" mode remains lit.



- To obtain steam, press the steam trigger under the iron handle. The steam will stop when you release the button.

USING YOUR APPLIANCE



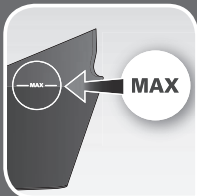
- To obtain even more steam, press the steam trigger under the handle three times in quick succession for automatic sequential steam.



During ironing, do not leave the iron on the soleplate or on the flush accessory. It is safe to leave the iron on the base of the steam generator or on the heel.

* Depending on model

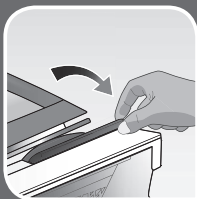
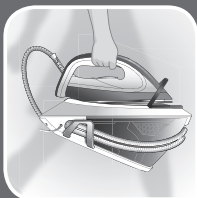
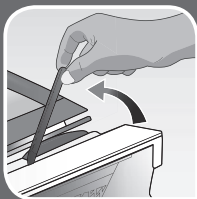
USING YOUR APPLIANCE



1.2 Filling the water tank

- Switch off and unplug the appliance.
- Remove the removable water tank using the handle located at the front of the steam generator.
- Fill it with tap water without exceeding the MAX level.
- Push it back into its housing until you hear a «click».

USING YOUR APPLIANCE



1.3 Transportation

Your steam generator is equipped with a lock system to hold the iron onto the base for easy transport and storage.

To transport your steam generator using the handle of the iron:

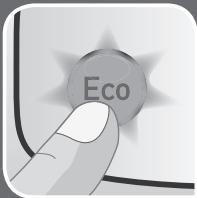
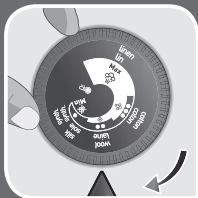
- Put the iron on the steam generator iron rest and raise the lock system over the iron until it locks into place (audible click).
- Hold the iron by the handle to transport your steam generator.

USING YOUR APPLIANCE

1.4 Settings

Changing modes

- To change the settings use the thermostat that is on the handle of the iron.
- When you turn the thermostat to the "synthetic" mode, the temperature decrease. When you turn the thermostat to the "linen" mode, the steam and temperature increase.
- When you press the "ECO" button, temperature and steam decrease.

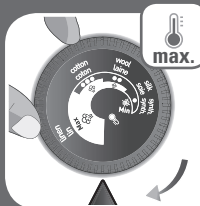


USING YOUR APPLIANCE



- When you press again the "ECO" button to remove the mode, the temperature and steam increase again.

USING YOUR APPLIANCE



1.5 Vertical steaming

As steam is very hot: never attempt to remove creases from a garment while it is being worn, always hang garments on a coat hanger.

- Hang the garment on a coat hanger and hold the fabric slightly taut with one hand.
- Holding the iron in a vertical position tilted slightly forwards, press on the steam control button (underneath the iron handle) moving the iron from top to bottom.
- Always use the max setting for vertical steaming.

USING YOUR APPLIANCE

1.6 Auto-off

- The steam generator is fitted with an «AUTO-OFF» monitoring system, which is activated automatically after approximately 8 minutes without use. The «ON-OFF» button flashes to indicate that the appliance is on standby.
- To reactivate the steam generator, press the «ON-OFF» button and you will hear a bip.
- After approximately 38 minutes of non-use, the «AUTO-OFF» system switches off your steam generator.
- To start your ironing again, press the «ON-OFF» button and you will hear a bip.

MAINTENANCE AND STORAGE

2.1 Emptying the calc collector*

- For long lasting steam performance, feel free to empty the calc collector every now and then.
- Switch off and unplug the appliance.

Appliance has to be unplugged for at least 1h and has cooled down completely before being carried out.

- Fully unlock the collector and pull it out of the base unit.

Do not use your steam generator without reinserting the calc collector.

* Depending on model

MAINTENANCE AND STORAGE

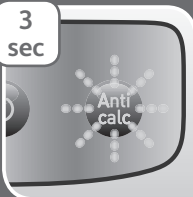
2.2 Descaling your generator

- The flashing «Anti calc» indicator light indicates that descaling is necessary.
- Switch off the unit by pressing the «Off» button, then unplug the unit.
- Move the unit over a sink and fill the water tank.
- Detach the removable stand from the unit's base.*
- Set down the stand near the sink and place the iron on top.*
- Put back the water tank in the base.
- Plug in the unit and switch it on by pressing the «On» button.

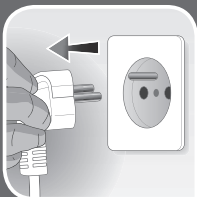
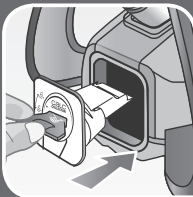
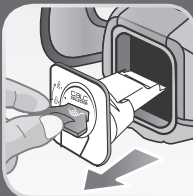
* Depending on model

MAINTENANCE AND STORAGE

3
sec



 biiiiip
OFF



• If you do not have the model with the removable stand, then hold your iron above the sink.

• Press the blinking «Anti calc» button for 3 seconds.

• The descaling operation is performed, during which the iron emits water and steam for 2 minutes. Be aware of the heat of the iron during the descaling cycle.

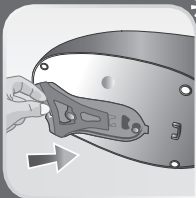
• An audio signal (long beep) sounds at the end of the descaling procedure.

• The unit will shut down automatically. You must then unplug the unit.

• Unlock and remove the anti-calc collector in the back of the iron to rinse it.*

• Next, reposition the collector, as well as the removable stand.*

MAINTENANCE AND STORAGE

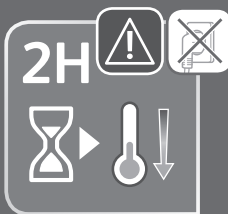


*

- Please be careful to empty the water tank before storing back the removable stand.*

* Depending on model

MAINTENANCE AND STORAGE



2.3 Cleaning

Appliance has to be unplugged for at least 2 hours and has cooled down completely before being carried out.

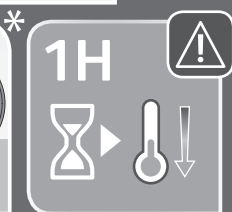
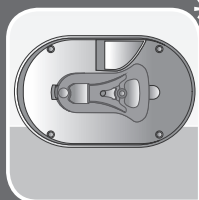
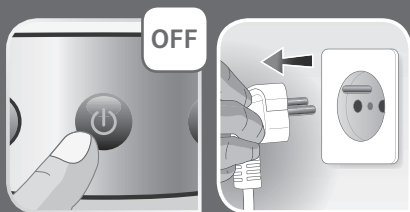
- Clean soleplate with a soft damp cloth.

Do not use detergent or descaling products for cleaning the soleplate.

- Clean the plastic parts of the appliance occasionally with a soft cloth.

Never hold the iron or the base unit under the tap.

MAINTENANCE AND STORAGE



2.4 Storage

- Switch off and unplug the appliance.
- Store the steam cord in its slide storage place without stretching it too much.
- Store the flush accessory in its holder placed underneath the appliance.*
- Leave the steam generator to cool (around 1h) then empty the water tank before putting it away if you are storing it in a cupboard or a confined space.

If you store your steam generator in a relatively cold place (approximately $<10^{\circ}\text{C}$), put it in a warm place before starting your ironing.


* Depending on model

Safety instructions

Important recommendations

- Please read these instructions carefully before first use. This product has been designed for domestic indoor use only. Any commercial use, inappropriate use or failure to comply with the instructions, the manufacturer accepts no responsibility and the guarantee will not apply.
- Never unplug the appliance by pulling the power cord. Always unplug your appliance:
 - before filling the water tank.
 - before cleaning the appliance,
 - after each use.
- The appliance must be used and placed on a flat, stable, heat-resistant surface. When you place the iron on the iron rest, make sure that the surface on which you place it is stable.
- This appliance is not intended to be used by persons (including children) with reduced or impaired physical, sensory or mental capabilities or persons lacking appropriate knowledge or experience, unless a person responsible for their safety provides either supervision or appropriate instructions concerning use of the appliance prior to its use.
- Children should be supervised to ensure they do not play with the appliance.
- This appliance may be used by children aged 8 or over and persons lacking appropriate knowledge or experience or persons with reduced or impaired

physical, sensory or mental capabilities provided that they have been thoroughly instructed regarding the use of the appliance, are supervised, and understand the risks involved. Children shall not play with the appliance. Cleaning and user maintenance shall not be made by children without supervision. Keep the iron and its cord out of reach of children less than 8 years of age when it is energized or cooling down.


-  The surfaces of your appliance marked by this symbol can reach very high temperatures when functioning, which may cause burns. Do not touch the hot surfaces of the appliance (accessible metal parts and plastic parts adjacent to the metallic parts) until the appliance has completely cooled.
- Never leave the appliance unattended when it is connected to the mains. Before storing the appliance, once it is unplugged, please wait until it has cooled down (around 1 hour).
- Never fill your appliance directly from the tap.
- The cartridge cap must not be opened during use.
- The appliance must not be used if it has been dropped, if it has any visible damage, if it leaks, or if it functions abnormally in any way. Do not attempt to dismantle your appliance: have it examined at an Approved Service Centre to avoid any danger.
- Check the electrical power and water connection cords for signs of wear or damage prior to use. If the electrical power cord or the water connection cord is damaged, it must be replaced by an Approved Service Centre to avoid any danger.

- All accessories, consumable goods and spare parts must be purchased exclusively from an Authorised Service Centre.
- For your safety, this device complies with applicable standards and regulations (Low Voltage Directives, Electromagnetic Compatibility, Environment, etc.)
- Your appliance is an electrical appliance: it must be used under normal conditions of use.
- It is equipped with a thermal fuse to avoid overheating.
- Always plug your steam generator:
 - Into an electrical system whose voltage is between 220 and 240 V.
 - Into an earthed electrical outlet.
- Any connection error may cause irreversible damage and invalidates the guarantee. If you use an extension cord, ensure that it is in good condition, has a plug with an earth connection and is suited to the power rating of the appliance.

Important notice for $\geq 2800W$ models only :

Under unfavorable conditions, phenomena such as transient voltage drops or lighting fluctuations may occur. Therefore it is recommended to plug the iron into a power supply with a maximum impedance of 0,30 Ω . If necessary, the user can contact the electricity supplier for further information about the system impedance at the interface point.

- Fully unwind the electrical cord and plug it into an earthed electrical outlet.
- Do not leave the power or water connection cords close to or in contact with sources of heat or sharp edges.

- The sole plate of your iron and the iron rest on the base unit can reach extremely high temperatures, and can cause burns: do not touch them. Never touch the electrical power cords with the sole plate of the iron.
- Always ensure that the base unit is positioned close enough to the ironing surface to avoid straining and premature wear of the water connection cord.
- Always use a vented/mesh ironing board to prevent water spots on clothes and to avoid hot steam venting sideways. Be careful of hot steam when ironing close to the edges of the board.
- Your appliance produces steam which may cause burns.
 - Handle the iron carefully, especially when ironing vertically.
 - Never iron a piece of clothing while it is worn by a person, but always when it is on a hanger.
 - Never iron while in a sitting position with one's legs under the ironing board.
 - Never point the steam at people or animals.
- Never immerse your appliance in water or any other liquid. Never place it under a running tap.
-  During first use, your appliance may give off smoke, an odour or a discharge of particles, but this is normal, is not harmful and will disappear. If you use the appliance for the first time, if you have replaced the anti calc cartridge or after filling the water tank, press the steam control button continuously for few minutes pointing it away from your linen, in order to prime the pump and obtain steam.

- When in use, your electric pump injects water into the iron soleplate. It makes a noise but this is normal.
- Safety Instructions for the Anti-Scale Cartridge and the Collector (Depending on Model):



- Not for drinking



- Keep out of the reach of children



- Dispose with household refuse



- Keep in cool dry place

- Prior to rinsing the collector (depending on the model), always wait until the appliance is cool and unplugged for over an hour to unscrew the collector. To perform this operation, the product must be near a sink, since some water may flow out when opening it.

- Never operate the appliance without the scale collector.

- Never fill the iron using the collector's opening.

- Always iron on the same level as the appliance so as to not strain the cord. Do not place the appliance on a lower level or on the floor.

Preparation

What water may be used ?

- This appliance has been designed to be used with untreated tap water.
- Types of water not to use: In order to prolong your appliance life, you should not use water from clothes dryers, scented or softened water containing additives, water from refrigerators, batteries, air conditioners, rain water, boiled, filtered or bottled water. Do not use pure distilled nor pure demineralised water.
- All the type of water listed above may contain organic waste, mineral or chemical elements that can cause

spitting, brown staining or premature wear of the appliance.

- Do not fill the water tank from the cartridge compartment.
- Empty the water tank after every use. Do not store the steam generator with water in the water tank.

Semi-automatic self-cleaning procedure*

- Never start the self-cleaning procedure when the appliance is on its base.
- Always place the iron on its cleaning stand, over a sink.
- Ensure that the scale collector* is installed in the iron and properly locked, prior to starting self-cleaning.
- Never touch the iron or its cleaning stand during self-cleaning. The cleaning accessory may still be hot; wait at least 15 minutes before handling it.
- The cleaning stand is only intended for self-cleaning.
- Never use this accessory as an iron holder during normal use.



*depending on the model

PLEASE RETAIN THIS INSTRUCTION BOOKLET FOR FUTURE REFERENCE

Environment protection first !



- ① Your appliance contains valuable materials which can be recovered or recycled.
- ➡ Leave it at a civic waste disposal centre.

TROUBLESHOOTING

Problem	Possible Causes	Solutions
Your iron is producing little or no steam.	You have just filled the tank or changed the anti-calc cartridge, or you have just started using it.	Press the steam control button continuously for few minutes pointing it away from your linen, in order to prime the pump.
	There is no anti calc cartridge in the appliance or it is not properly installed.	Make sure the anticalc cartridge is installed and locked in its compartment.
	Steam cannot be produced at the temperature you have selected.	Set the thermostat control in the coloured zone (•• or MAX).
	The water tank is empty.	Fill the tank.
Water runs out of the holes of the soleplate.	You are using steam for the first time or you have not used it for some time.	Press on the steam control button away from your ironing board until the iron produces steam.
	The setting is not correct (1 dot / 2 dots) and the soleplate is not hot enough to produce steam.	Set the iron at 3 dots (••• or MAX) and wait for the iron thermostat light to go out before activating the steam button again.

Problem	Possible Causes	Solutions
Water streaks appear on the linen.	Your ironing board is saturated with water because it is not suitable for use with an appliance.	Check that your ironing board is suitable. We recommend that you use a vented/mesh type ironing board.
Brown streaks come through the holes in the soleplate and stain the linen.	You are using chemical descaling agents or additives in the water ironing.	Never add this type of product in the water tank (see "for what water may be used"). Contact an Approved Service Centre.
	Your linen is not rinsed sufficiently or you have ironed a new garment before washing it.	Ensure linen is rinsed thoroughly to remove any soap deposits or chemicals on new garments which may be sucked up by the iron.
The soleplate is dirty or brown and may stain the linen.	You are ironing at too high a temperature.	See our recommendations regarding temperature control setting.
	You are using starch.	Always spray starch on the reverse side of the fabric to be ironed.
Steam or water escapes under the appliance.	The appliance is faulty.	Stop using your appliance and contact an Approved Service Centre.

Problem	Possible Causes	Solutions
The "anti calc" indicator is flashing.	The anti calc cartridge is no longer efficient.	Replace the anti calc cartridge with a new one then press the reset button for a minimum of 3 seconds.
The anti calc indicator is still flashing after replacing the cartridge.	You have not pressed the reset button.	Press the reset button until the light stops flashing.

* Depending on the model

If you have any problems or queries please call our Customer Relations team first for expert help and advice

